

Datasheet for ABIN7191991

**anti-PRDM2 antibody****3** Images[Go to Product page](#)

## Overview

Quantity:	100 µL
Target:	PRDM2
Reactivity:	Human
Host:	Rabbit
Clonality:	Polyclonal
Application:	ELISA, Western Blotting (WB), Immunohistochemistry (IHC)

## Product Details

Immunogen:	Synthetic peptide of Human PRDM2
Isotype:	IgG
Cross-Reactivity:	Human
Purification:	Antigen affinity purification

## Target Details

Target:	PRDM2
Alternative Name:	PRDM2 ( <a href="#">PRDM2 Products</a> )
Background:	Background: This tumor suppressor gene is a member of a nuclear histone/protein methyltransferase superfamily. It encodes a zinc finger protein that can bind to retinoblastoma protein, estrogen receptor, and the TPA-responsive element (MTE) of the heme-oxygenase-1 gene. Although the functions of this protein have not been fully characterized, it may (1) play a role in transcriptional regulation during neuronal differentiation and pathogenesis of

## Target Details

retinoblastoma, (2) act as a transcriptional activator of the heme-oxygenase-1 gene, and (3) be a specific effector of estrogen action. Multiple transcript variants encoding different isoforms have been found for this gene.

Aliases: GATA-3-binding protein G3B antibody, HUMHOXY1 antibody, KMT8 antibody, Lysine N-methyltransferase 8 antibody, MTB-ZF antibody, MTE-binding protein antibody, PR domain containing 2, with ZNF domain antibody, PR domain zinc finger protein 2 antibody, PR domain-containing protein 2 antibody, PRDM2 antibody, PRDM2\_HUMAN antibody, Retinoblastoma protein binding zinc finger protein antibody, Retinoblastoma protein-interacting zinc finger protein antibody, Retinoblastoma protein-interacting zinc-finger protein antibody, RIZ antibody, RIZ1 antibody, RIZ2 antibody, Zinc finger DNA binding protein antibody, Zinc finger protein RIZ antibody

UniProt: [Q13029](#)

## Application Details

Application Notes: ELISA:1:1000-1:2000, WB:1:200-1:1000, IHC:1:50-1:200,

Restrictions: For Research Use only

## Handling

Format: Liquid

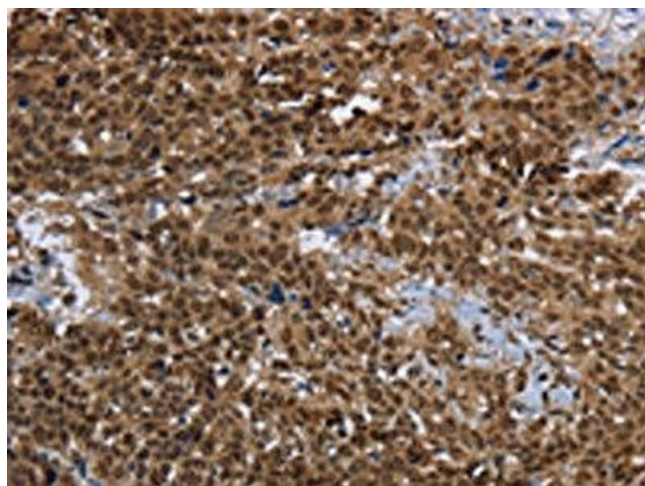
Buffer: -20 °C, pH 7.4 PBS, 0.05 % Sodium azide, 40 % Glycerol

Preservative: Sodium azide

Precaution of Use: This product contains Sodium azide: a POISONOUS AND HAZARDOUS SUBSTANCE which should be handled by trained staff only.

Storage: -20 °C, -80 °C

Storage Comment: Upon receipt, store at -20°C or -80°C. Avoid repeated freeze.



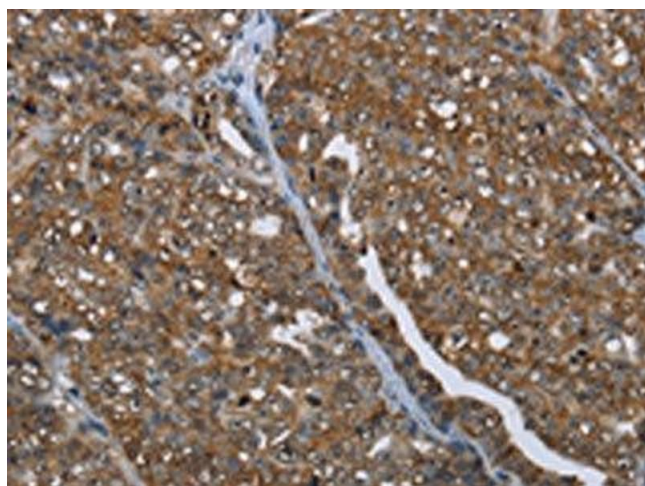
#### Immunohistochemistry

**Image 1.** The image on the left is immunohistochemistry of paraffin-embedded Human cervical cancer tissue using ABIN7191991(PRDM2 Antibody) at dilution 1/25, on the right is treated with synthetic peptide. (Original magnification: x200)



#### Western Blotting

**Image 2.** Gel: 6 % SDS-PAGE, Lysate: 40 µg, Lane: MCF7 cells, Primary antibody: ABIN7191991(PRDM2 Antibody) at dilution 1/200, Secondary antibody: Goat anti rabbit IgG at 1/8000 dilution, Exposure time: 1 minute



#### Immunohistochemistry

**Image 3.** The image on the left is immunohistochemistry of paraffin-embedded Human ovarian cancer tissue using ABIN7191991(PRDM2 Antibody) at dilution 1/25, on the right is treated with synthetic peptide. (Original magnification: x200)