

Datasheet for ABIN7192019

anti-PRKX antibody**2** Images[Go to Product page](#)

Overview

Quantity:	100 µL
Target:	PRKX
Reactivity:	Human
Host:	Rabbit
Clonality:	Polyclonal
Conjugate:	This PRKX antibody is un-conjugated
Application:	ELISA, Immunohistochemistry (IHC)

Product Details

Immunogen:	Synthetic peptide of Human PRKX
Isotype:	IgG
Cross-Reactivity:	Human
Purification:	Antigen affinity purification

Target Details

Target:	PRKX
Alternative Name:	PRKX (PRKX Products)
Background:	Background: This gene encodes a serine threonine protein kinase that has similarity to the catalytic subunit of cyclic AMP dependent protein kinases. The encoded protein is developmentally regulated and may be involved in renal epithelial morphogenesis. This protein may also be involved in macrophage and granulocyte maturation. Abnormal recombination

Target Details

between this gene and a related pseudogene on chromosome Y is a frequent cause of sex reversal disorder in XX males and XY females. Pseudogenes of this gene are found on chromosomes X, 15 and Y.

Aliases: PKX1 antibody, PRKX antibody, PRKX_HUMAN antibody, Protein kinase PKX1 antibody, Serine/threonine-protein kinase PRKX antibody

UniProt: [P51817](#)

Pathways: [Thyroid Hormone Synthesis](#)

Application Details

Application Notes: ELISA:1:2000-1:5000, IHC:1:25-1:100,

Restrictions: For Research Use only

Handling

Format: Liquid

Buffer: -20 °C, pH 7.4 PBS, 0.05 % Sodium azide, 40 % Glycerol

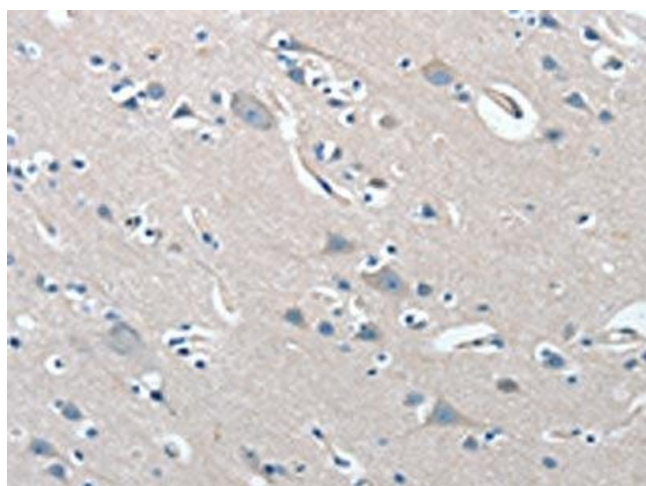
Preservative: Sodium azide

Precaution of Use: This product contains Sodium azide: a POISONOUS AND HAZARDOUS SUBSTANCE which should be handled by trained staff only.

Storage: -20 °C,-80 °C

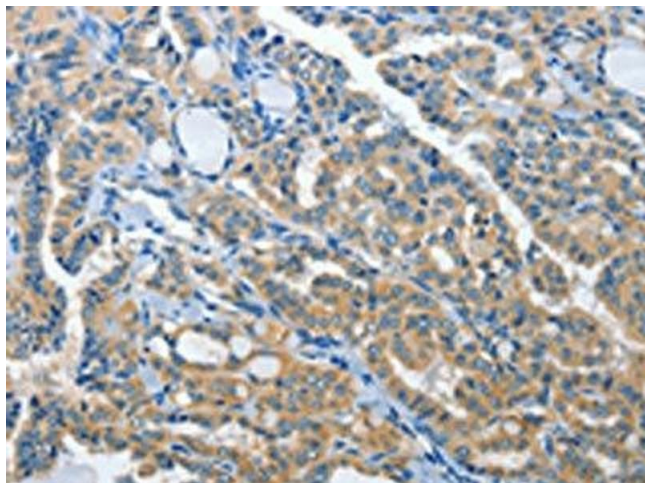
Storage Comment: Upon receipt, store at -20°C or -80°C. Avoid repeated freeze.

Images



Immunohistochemistry

Image 1. The image on the left is immunohistochemistry of paraffin-embedded Human brain tissue using ABIN7192019 (PRKX Antibody) at dilution 1/15, on the right is treated with synthetic peptide. (Original magnification: x200)



Immunohistochemistry

Image 2. The image on the left is immunohistochemistry of paraffin-embedded Human thyroid cancer tissue using ABIN7192019(PRKX Antibody) at dilution 1/15, on the right is treated with synthetic peptide. (Original magnification: x200)