

Datasheet for ABIN7192036

anti-PSMB8 antibody**3** Images[Go to Product page](#)

Overview

Quantity:	100 µL
Target:	PSMB8
Reactivity:	Human
Host:	Rabbit
Clonality:	Polyclonal
Application:	Western Blotting (WB), Immunohistochemistry (IHC), ELISA

Product Details

Immunogen:	Synthetic peptide of Human PSMB8
Isotype:	IgG
Cross-Reactivity:	Human
Purification:	Antigen affinity purification

Target Details

Target:	PSMB8
Alternative Name:	PSMB8 (PSMB8 Products)
Background:	Background: The proteasome is a multicatalytic proteinase complex with a highly ordered ring-shaped 20S core structure. The core structure is composed of 4 rings of 28 non-identical subunits, 2 rings are composed of 7 alpha subunits and 2 rings are composed of 7 beta subunits. Proteasomes are distributed throughout eukaryotic cells at a high concentration and cleave peptides in an ATP/ubiquitin-dependent process in a non-lysosomal pathway.

Target Details

Aliases: ALDD antibody, D6S216 antibody, D6S216E antibody, Large multifunctional peptidase 7 antibody, Large multifunctional protease 7 antibody, LMP 7 antibody, LMP7 antibody, Low molecular mass protein 7 antibody, Low molecular weight protein 7 antibody, Macropain subunit C13 antibody, MGC1491 antibody, Multicatalytic endopeptidase complex subunit C13 antibody, NKJO antibody, OTTHUMP00000062981 antibody, Protease component C13 antibody, Proteasome (prosome macropain) subunit beta type 8 antibody, Proteasome (prosome, macropain) subunit, beta type, 8 (large multifunctional peptidase 7) antibody, Proteasome beta 8 subunit antibody, Proteasome catalytic subunit 3i antibody, Proteasome component C13 antibody, Proteasome related gene 7 antibody, Proteasome subunit beta 5i antibody, Proteasome subunit beta 8 antibody, Proteasome subunit beta type 8 antibody, Proteasome subunit beta type antibody, Proteasome subunit beta type-8 antibody, Proteasome subunit beta-5i antibody, Proteasome subunit Y2 antibody, PSB8_HUMAN antibody, PSMB 8 antibody, PSMB5i antibody, PSMB8 antibody, Really interesting new gene 10 protein antibody, RING 10 antibody, RING10 antibody, Y2 antibody

UniProt: [P28062](#)

Pathways: [Mitotic G1-G1/S Phases](#), [DNA Replication](#), [Synthesis of DNA](#)

Application Details

Application Notes: ELISA:1:2000-1:5000, WB:1:500-1:2000, IHC:1:25-1:100,

Restrictions: For Research Use only

Handling

Format: Liquid

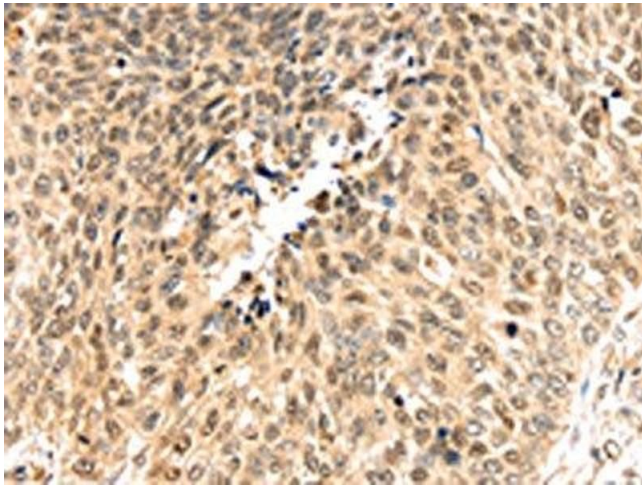
Buffer: -20 °C, pH 7.4 PBS, 0.05 % Sodium azide, 40 % Glycerol

Preservative: Sodium azide

Precaution of Use: This product contains Sodium azide: a POISONOUS AND HAZARDOUS SUBSTANCE which should be handled by trained staff only.

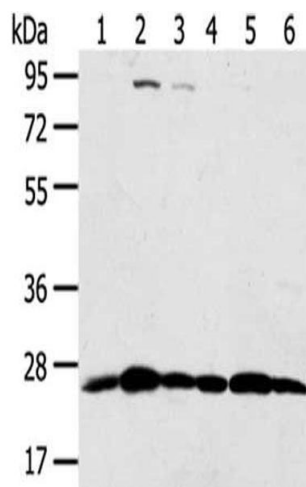
Storage: -20 °C,-80 °C

Storage Comment: Upon receipt, store at -20°C or -80°C. Avoid repeated freeze.



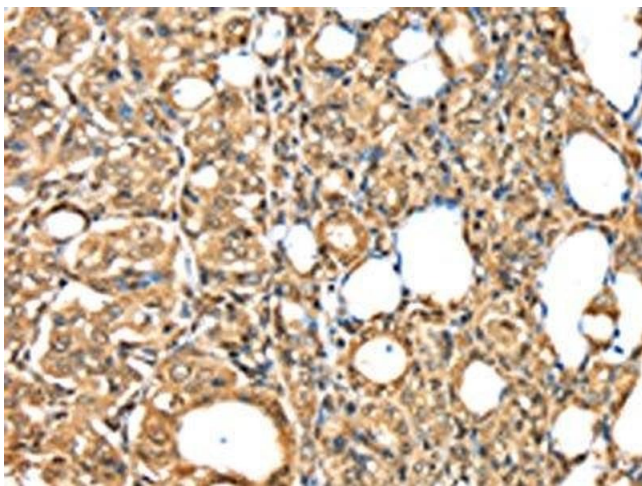
Immunohistochemistry

Image 1. The image on the left is immunohistochemistry of paraffin-embedded Human lung cancer tissue using ABIN7192036(PSMB8 Antibody) at dilution 1/30, on the right is treated with synthetic peptide. (Original magnification: x200)



Western Blotting

Image 2. Gel: 8 % SDS-PAGE, Lysate: 40 µg, Lane 1-6: Hela cells, Raji cells, Jurkat cells, Human placenta tissue, A431 cells, 231 cells, Primary antibody: ABIN7192036(PSMB8 Antibody) at dilution 1/350 dilution, Secondary antibody: Goat anti rabbit IgG at 1/8000 dilution, Exposure time: 10 seconds



Immunohistochemistry

Image 3. The image on the left is immunohistochemistry of paraffin-embedded Human thyroid cancer tissue using ABIN7192036(PSMB8 Antibody) at dilution 1/30, on the right is treated with synthetic peptide. (Original magnification: x200)