

Datasheet for ABIN7192042  
**anti-Persephin antibody**

## 2 Images

[Go to Product page](#)

## Overview

|              |  |
|--------------|--|
| Quantity:    | 100 µL                                   |
| Target:      | Persephin (PSPN)                         |
| Reactivity:  | Human                                    |
| Host:        | Rabbit                                   |
| Clonality:   | Polyclonal                               |
| Conjugate:   | This Persephin antibody is un-conjugated |
| Application: | ELISA, Immunohistochemistry (IHC)        |

## Product Details

|                   |                                 |
|-------------------|---------------------------------|
| Immunogen:        | Synthetic peptide of Human PSPN |
| Isotype:          | IgG                             |
| Cross-Reactivity: | Human                           |
| Purification:     | Antigen affinity purification   |

## Target Details

|                   |   |
|-------------------|---|
| Target:           | Persephin (PSPN)  |
| Alternative Name: | PSPN ( <a href="#">PSPN Products</a> )  |
| Background:       | Background: The protein encoded by this gene is a neurotrophic factor, belonging to the GDNF family. Neurotrophic factors are important for the proper development and maintenance of the nervous system. These factors promote neuronal survival and can prevent the neuronal degeneration associated with injury, toxin exposure, or neurodegenerative disease. The |

## Target Details

encoded protein has amino acid similarity to its other family members, glial cell line-derived neurotrophic factor and neurturin. This gene product promotes the survival of ventral midbrain dopaminergic neurons in culture and prevents their degeneration after 6-hydroxydopamine treatment in vivo.

Aliases: PSPN antibody, Persephin antibody, PSP antibody

UniProt: [O60542](#)

## Application Details

Application Notes: ELISA:1:1000-1:5000, IHC:1:25-1:100,

Restrictions: For Research Use only

## Handling

Format: Liquid

Buffer: -20 °C, pH 7.4 PBS, 0.05 % Sodium azide, 40 % Glycerol

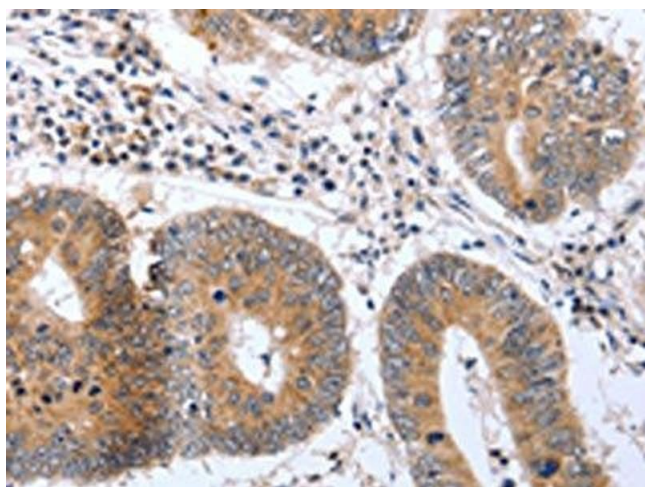
Preservative: Sodium azide

Precaution of Use: This product contains Sodium azide: a POISONOUS AND HAZARDOUS SUBSTANCE which should be handled by trained staff only.

Storage: -20 °C,-80 °C

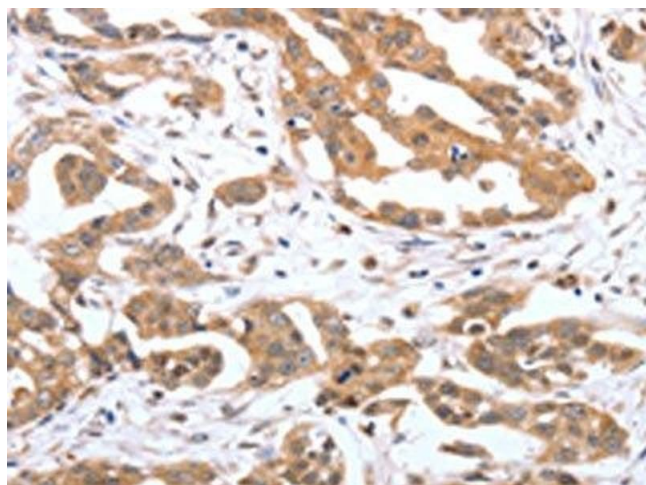
Storage Comment: Upon receipt, store at -20°C or -80°C. Avoid repeated freeze.

## Images



### Immunohistochemistry

**Image 1.** The image on the left is immunohistochemistry of paraffin-embedded Human colon cancer tissue using ABIN7192042(PSPN Antibody) at dilution 1/25, on the right is treated with synthetic peptide. (Original magnification: x200)



#### Immunohistochemistry

**Image 2.** The image on the left is immunohistochemistry of paraffin-embedded Human ovarian cancer tissue using ABIN7192042(PSPN Antibody) at dilution 1/25, on the right is treated with synthetic peptide. (Original magnification: x200)