

Datasheet for ABIN7192064

**anti-PTPN2 antibody****2** Images[Go to Product page](#)

## Overview

Quantity:	100 µL
Target:	PTPN2
Reactivity:	Human
Host:	Rabbit
Clonality:	Polyclonal
Conjugate:	This PTPN2 antibody is un-conjugated
Application:	Immunohistochemistry (IHC), ELISA

## Product Details

Immunogen:	Synthetic peptide of Human PTPN20A/PTPN20B
Isotype:	IgG
Cross-Reactivity:	Human
Purification:	Antigen affinity purification

## Target Details

Target:	PTPN2
Alternative Name:	PTPN2 ( <a href="#">PTPN2 Products</a> )
Background:	Background: The product of this gene belongs to the family of classical tyrosine-specific protein tyrosine phosphatases. Many protein tyrosine phosphatases have been shown to regulate fundamental cellular processes. The encoded protein appears to be targeted to sites of actin polymerization. A pseudogene of this gene has been defined on chromosome 10. Alternative

## Target Details

splicing results in multiple transcript variants.

Aliases: lomer copy antibody, bA142I17.1 antibody, bA42B19.1 antibody, cancer/testis antigen 126 antibody, CT126 antibody, hPTPN20 antibody, protein tyrosine phosphatase, non-receptor type 20B antibody, PTN20\_HUMAN antibody, PTPN20, centromeric copy antibody, PTPN20A antibody, PTPN20B antibody, Tyrosine-protein phosphatase non-receptor type 20 antibody

UniProt: [Q4JDL3](#)

Pathways: [EGFR Signaling Pathway](#), [Carbohydrate Homeostasis](#), [Regulation of Carbohydrate Metabolic Process](#), [Platelet-derived growth Factor Receptor Signaling](#)

## Application Details

Application Notes: ELISA:1:2000-1:10000, IHC:1:100-1:300,

Restrictions: For Research Use only

## Handling

Format: Liquid

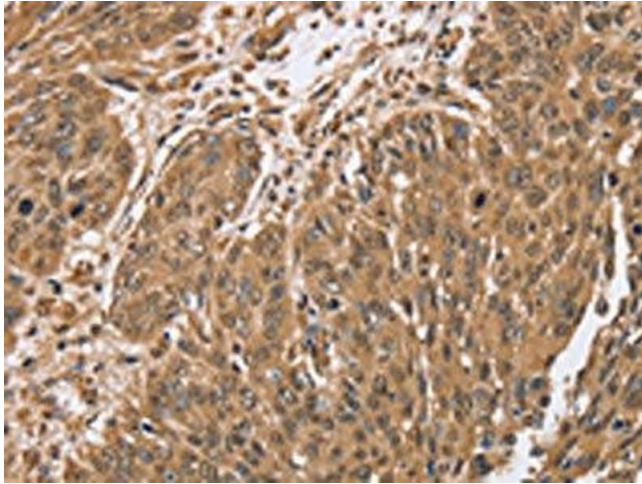
Buffer: -20 °C, pH 7.4 PBS, 0.05 % Sodium azide, 40 % Glycerol

Preservative: Sodium azide

Precaution of Use: This product contains Sodium azide: a POISONOUS AND HAZARDOUS SUBSTANCE which should be handled by trained staff only.

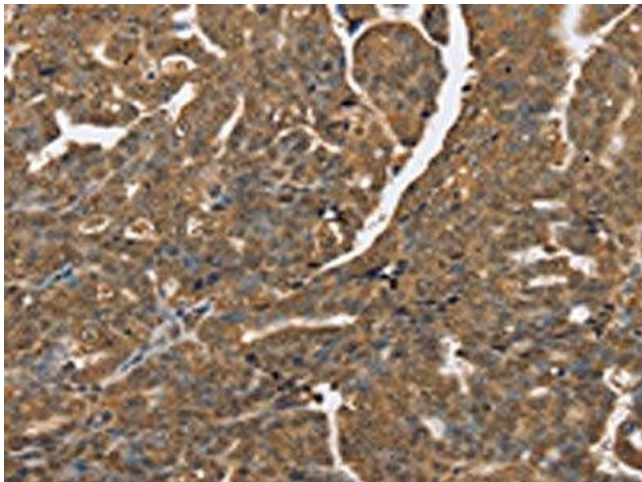
Storage: -20 °C, -80 °C

Storage Comment: Upon receipt, store at -20°C or -80°C. Avoid repeated freeze.



#### Immunohistochemistry

**Image 1.** The image on the left is immunohistochemistry of paraffin-embedded Human lung cancer tissue using ABIN7192064(PTPN20A/PTPN20B Antibody) at dilution 1/40, on the right is treated with synthetic peptide. (Original magnification: x200)



#### Immunohistochemistry

**Image 2.** The image on the left is immunohistochemistry of paraffin-embedded Human cervical cancer tissue using ABIN7192064(PTPN20A/PTPN20B Antibody) at dilution 1/40, on the right is treated with synthetic peptide. (Original magnification: x200)