

Datasheet for ABIN7192090

**anti-RAB14 antibody****3** Images[Go to Product page](#)

## Overview

Quantity:	100 µL
Target:	RAB14
Reactivity:	Human
Host:	Rabbit
Clonality:	Polyclonal
Conjugate:	This RAB14 antibody is un-conjugated
Application:	Western Blotting (WB), ELISA, Immunohistochemistry (IHC)

## Product Details

Immunogen:	Synthetic peptide of Human RAB14
Isotype:	IgG
Cross-Reactivity:	Human, Mouse, Rat
Purification:	Antigen affinity purification

## Target Details

Target:	RAB14
Alternative Name:	RAB14 ( <a href="#">RAB14 Products</a> )
Background:	Background: RAB14 belongs to the large RAB family of low molecular mass GTPases that are involved in intracellular membrane trafficking. These proteins act as molecular switches that flip between an inactive GDP-bound state and an active GTP-bound state in which they recruit downstream effector proteins onto membranes.

## Target Details

Aliases: bA165P4.3 antibody, F protein binding protein 1 antibody, FBP antibody, GTPase Rab14 antibody, RAB 14 antibody, RAB14 antibody, RAB14 member RAS oncogene family antibody, RAB14\_HUMAN antibody, Ras related protein Rab 14 antibody, Ras-related protein Rab-14 antibody, RP11 165P4.4 antibody, Small GTP binding protein RAB14 antibody

UniProt: [P61106](#)

Pathways: [Asymmetric Protein Localization](#), [SARS-CoV-2 Protein Interactome](#)

## Application Details

Application Notes: ELISA:1:1000-1:2000, WB:1:200-1:1000, IHC:1:50-1:300,

Restrictions: For Research Use only

## Handling

Format: Liquid

Buffer: -20 °C, pH 7.4 PBS, 0.05 % Sodium azide, 40 % Glycerol

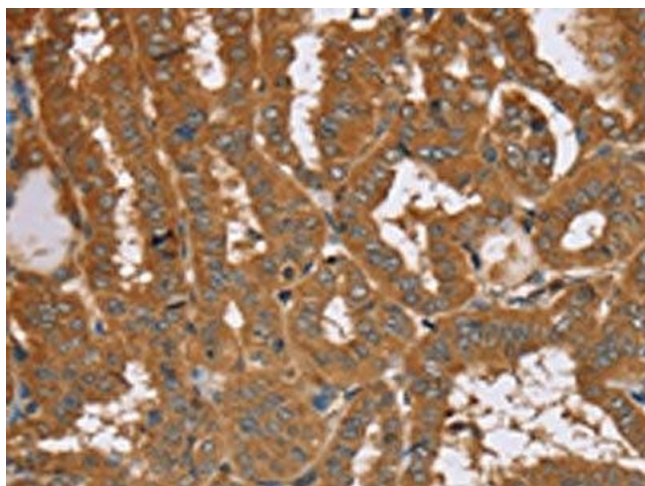
Preservative: Sodium azide

Precaution of Use: This product contains Sodium azide: a POISONOUS AND HAZARDOUS SUBSTANCE which should be handled by trained staff only.

Storage: -20 °C, -80 °C

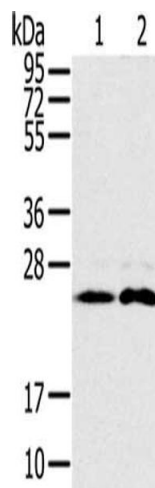
Storage Comment: Upon receipt, store at -20°C or -80°C. Avoid repeated freeze.

## Images



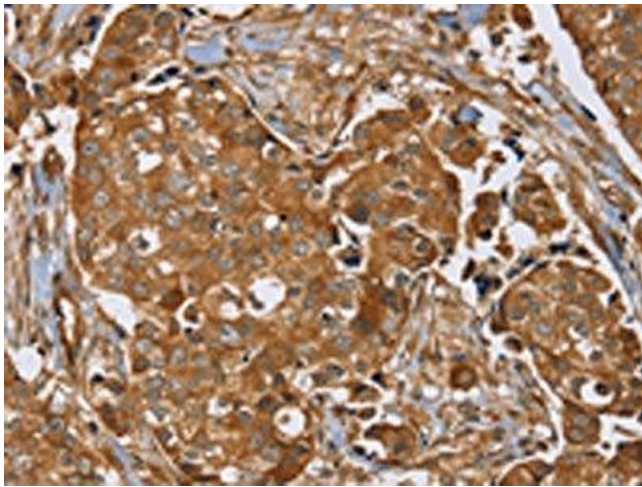
### Immunohistochemistry

**Image 1.** The image on the left is immunohistochemistry of paraffin-embedded Human thyroid cancer tissue using ABIN7192090(RAB14 Antibody) at dilution 1/40, on the right is treated with synthetic peptide. (Original magnification: x200)



### Western Blotting

**Image 2.** Gel: 10 % SDS-PAGE, Lysate: 40 µg, Lane 1-2: Mouse brain tissue, Raji cells, Primary antibody: ABIN7192090(RAB14 Antibody) at dilution 1/200, Secondary antibody: Goat anti rabbit IgG at 1/8000 dilution, Exposure time: 30 seconds



### Immunohistochemistry

**Image 3.** The image on the left is immunohistochemistry of paraffin-embedded Human breast cancer tissue using ABIN7192090(RAB14 Antibody) at dilution 1/40, on the right is treated with synthetic peptide. (Original magnification: x200)