

## Datasheet for ABIN7192097

**anti-RAB22A antibody**

## 2 Images

[Go to Product page](#)

## Overview

Quantity:	100 µL
Target:	RAB22A
Reactivity:	Human
Host:	Rabbit
Clonality:	Polyclonal
Conjugate:	This RAB22A antibody is un-conjugated
Application:	Western Blotting (WB), ELISA, Immunohistochemistry (IHC)

## Product Details

Immunogen:	Synthetic peptide of Human RAB22A
Isotype:	IgG
Cross-Reactivity:	Human, Mouse
Purification:	Antigen affinity purification

## Target Details

Target:	RAB22A
Alternative Name:	RAB22A ( <a href="#">RAB22A Products</a> )
Background:	Background: The protein encoded by this gene is a member of the RAB family of small GTPases. The GTP-bound form of the encoded protein has been shown to interact with early-endosomal antigen 1, and may be involved in the trafficking of and interaction between endosomal compartments.

## Target Details

Aliases: 3732413A17Rik antibody, A1662177 antibody, AW319644 antibody, AW550514 antibody, E130120E14Rik antibody, GTP binding protein RAB22A antibody, MGC16770 antibody, OTTMUSP00000017605 antibody, Rab 22 antibody, RAB 22A antibody, Rab-22 antibody, Rab22 antibody, RAB22A antibody, RAB22A member RAS oncogene family antibody, Ras related protein Rab 22A antibody, Ras related protein Rab22A antibody, Ras-related protein Rab-22A antibody, RB22A\_HUMAN antibody

UniProt: [Q9UL26](#)

## Application Details

Application Notes: ELISA:1:1000-1:5000, WB:1:500-1:2000, IHC:1:25-1:100,

Restrictions: For Research Use only

## Handling

Format: Liquid

Buffer: -20 °C, pH 7.4 PBS, 0.05 % Sodium azide, 40 % Glycerol

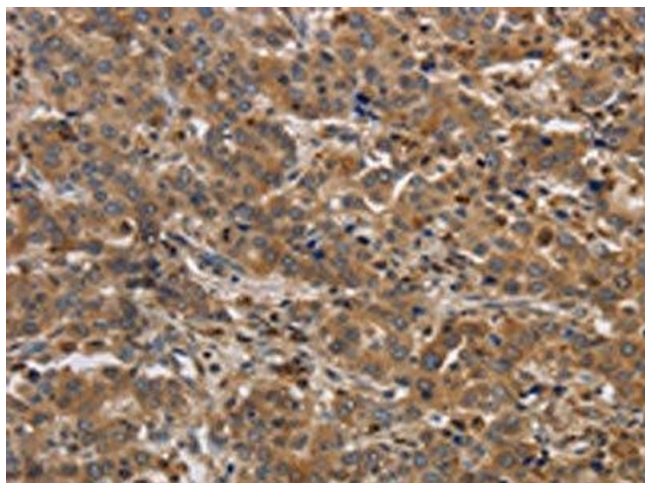
Preservative: Sodium azide

Precaution of Use: This product contains Sodium azide: a POISONOUS AND HAZARDOUS SUBSTANCE which should be handled by trained staff only.

Storage: -20 °C, -80 °C

Storage Comment: Upon receipt, store at -20°C or -80°C. Avoid repeated freeze.

## Images



### Immunohistochemistry

**Image 1.** The image on the left is immunohistochemistry of paraffin-embedded Human liver cancer tissue using ABIN7192097(RAB22A Antibody) at dilution 1/20, on the right is treated with synthetic peptide. (Original magnification: x200)



#### Western Blotting

**Image 2.** Gel: 12 % SDS-PAGE, Lysate: 40 µg, Lane: MCF7 cells, Primary antibody: ABIN7192097(RAB22A Antibody) at dilution 1/650, Secondary antibody: Goat anti rabbit IgG at 1/8000 dilution, Exposure time: 30 seconds