

Datasheet for ABIN7192115 **anti-RAB3D antibody**



[Go to Product page](#)

2 Images

Overview

Quantity:	100 µL
Target:	RAB3D
Reactivity:	Human
Host:	Rabbit
Clonality:	Polyclonal
Application:	Immunohistochemistry (IHC), ELISA

Product Details

Immunogen:	Synthetic peptide of Human Rab3D
Isotype:	IgG
Cross-Reactivity:	Human, Mouse, Rat
Purification:	Antigen affinity purification

Target Details

Target:	RAB3D
Alternative Name:	RAB3D (RAB3D Products)
Background:	Background: The RAB3D cDNA encodes a 24-kD protein as determined by in vitro translation. The deduced 219-amino acid sequence shows highest homology to the RAB3 subfamily of low molecular mass GTP-binding proteins. Northern blot analysis of various human hematopoietic cell lines showed a single transcript of 4.1 kb present at variable levels in each cell line, with highest expression in granulocytic lines. RAB3D was also highly expressed in YJ and HL-60

Target Details

cells in response to retinoic acid treatment.

Aliases: D2-2 antibody, Glioblastoma overexpressed antibody, GOV antibody, RAB 16 antibody, RAB16 antibody, Rab3d antibody, Rab3D upregulated with myeloid differentiation antibody, RAB3D, member RAS oncogene family antibody, RAB3D_HUMAN antibody, RAD3D antibody, Ras-related protein Rab-3D antibody

UniProt: [O95716](#)

Application Details

Application Notes: ELISA:1:1000-1:10000, IHC:1:25-1:100,

Restrictions: For Research Use only

Handling

Format: Liquid

Buffer: -20 °C, pH 7.4 PBS, 0.05 % Sodium azide, 40 % Glycerol

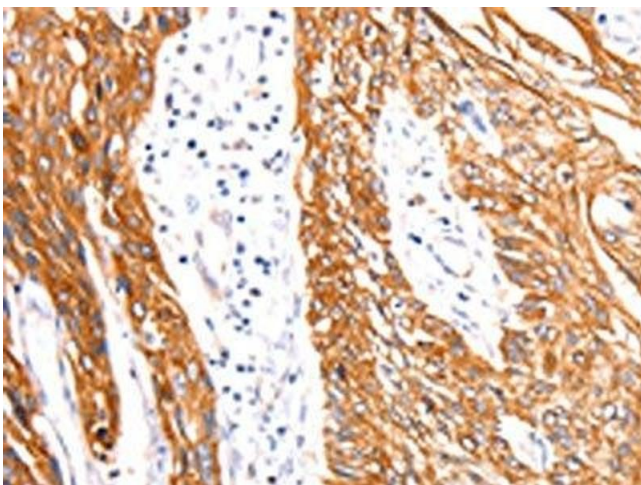
Preservative: Sodium azide

Precaution of Use: This product contains Sodium azide: a POISONOUS AND HAZARDOUS SUBSTANCE which should be handled by trained staff only.

Storage: -20 °C,-80 °C

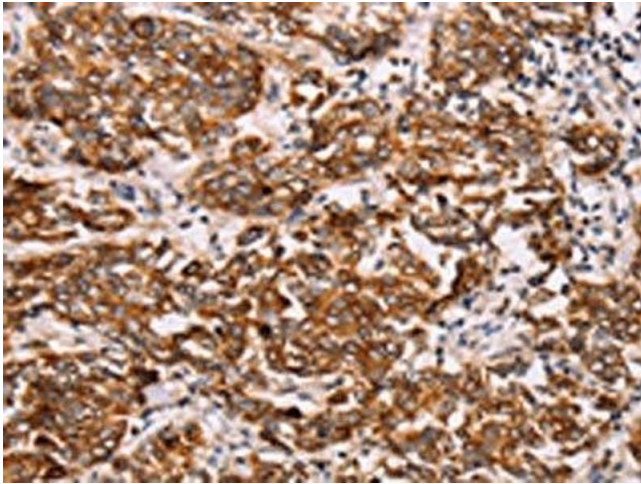
Storage Comment: Upon receipt, store at -20°C or -80°C. Avoid repeated freeze.

Images



Immunohistochemistry

Image 1. The image on the left is immunohistochemistry of paraffin-embedded Human esophagus cancer tissue using ABIN7192115(Rab3D Antibody) at dilution 1/27, on the right is treated with synthetic peptide. (Original magnification: x200)



Immunohistochemistry

Image 2. The image on the left is immunohistochemistry of paraffin-embedded Human breast cancer tissue using ABIN7192115(Rab3D Antibody) at dilution 1/27, on the right is treated with synthetic peptide. (Original magnification: x200)