

Datasheet for ABIN7192120

anti-Rab5c antibody**1** Image[Go to Product page](#)

Overview

Quantity:	100 µL
Target:	Rab5c
Reactivity:	Human
Host:	Rabbit
Clonality:	Polyclonal
Conjugate:	This Rab5c antibody is un-conjugated
Application:	Western Blotting (WB), ELISA

Product Details

Immunogen:	Synthetic peptide of Human RAB5C
Isotype:	IgG
Cross-Reactivity:	Human, Mouse
Purification:	Antigen affinity purification

Target Details

Target:	Rab5c
Alternative Name:	RAB5C (Rab5c Products)
Background:	Background: The protein is a member of the Rab protein family. Members of the Rab protein family are small GTPases of the Ras superfamily that are thought to ensure fidelity in the process of docking and/or fusion of vesicles with their correct acceptor compartment. The function is protein transport, Probably involved in vesicular traffic.

Target Details

Aliases: L1880 antibody, RAB, member of RAS oncogene family like antibody, RAB5C antibody, RAB5C, member of RAS oncogene family antibody, RAB5C, member RAS oncogene family antibody, RAB5C_HUMAN antibody, RAB5CL antibody, RAB5L antibody, RABL antibody, Ras-related protein Rab-5C antibody

UniProt: [P51148](#)

Pathways: [SARS-CoV-2 Protein Interactome](#)

Application Details

Application Notes: ELISA:1:2000-1:5000, WB:1:500-1:2000,

Restrictions: For Research Use only

Handling

Format: Liquid

Buffer: -20 °C, pH 7.4 PBS, 0.05 % Sodium azide, 40 % Glycerol

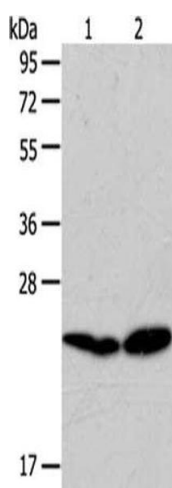
Preservative: Sodium azide

Precaution of Use: This product contains Sodium azide: a POISONOUS AND HAZARDOUS SUBSTANCE which should be handled by trained staff only.

Storage: -20 °C,-80 °C

Storage Comment: Upon receipt, store at -20°C or -80°C. Avoid repeated freeze.

Images



Western Blotting

Image 1. Gel: 10 % SDS-PAGE, Lysate: 40 µg, Lane 1-2: A549 cells, Lovo cells, Primary antibody: ABIN7192120(RAB5C Antibody) at dilution 1/100 dilution, Secondary antibody: Goat anti rabbit IgG at 1/8000 dilution, Exposure time: 30 seconds