

Datasheet for ABIN7192155

anti-RBM38 antibody**3** Images[Go to Product page](#)

Overview

Quantity:	100 µL
Target:	RBM38
Reactivity:	Human
Host:	Rabbit
Clonality:	Polyclonal
Application:	ELISA, Immunohistochemistry (IHC), Western Blotting (WB)

Product Details

Immunogen:	Synthetic peptide of Human RBM38
Isotype:	IgG
Cross-Reactivity:	Human, Mouse
Purification:	Antigen affinity purification

Target Details

Target:	RBM38
Alternative Name:	RBM38 (RBM38 Products)
Background:	Background: RBM38 (RNA-binding protein 38), also known as RNPC1 or SEB4. RBM38 is a cell cycle protein found in the cytosol and the Nucleus that exists as two alternatively spliced isoforms, 1 (RNPC1a) and 2 (RNPC1b), of 239 and 121 amino acids, respectively. Independent of p53 expression, RBM38 isoform 1 induces cell cycle arrest in G1 phase through maintaining transcript stability at the 3'-UTR of p21, a regulator of cell cycle progression at S phase. RBM38

Target Details

is also an mRNA splicing factor that regulates the expression of FGFR2. RBM38 contains one RRM (RNA recognition motif) domain.

Aliases: CLL associated antigen KW 5 antibody, CLL-associated antigen KW-5 antibody, HSRNASEB antibody, RBM38 antibody, RBM38_HUMAN antibody, RNA binding motif protein 38 antibody, RNA binding protein 38 antibody, RNA binding region (RNP1, RRM) containing 1 antibody, RNA binding region containing protein 1 antibody, RNA-binding motif protein 38 antibody, RNA-binding protein 38 antibody, RNA-binding region-containing protein 1 antibody, RNPC1 antibody, SEB4 antibody, SEB4B antibody, SEB4D antibody, ssDNA binding protein SEB4 antibody, ssDNA-binding protein SEB4 antibody

UniProt: [Q9H0Z9](#)

Pathways: [Regulation of Muscle Cell Differentiation, Skeletal Muscle Fiber Development](#)

Application Details

Application Notes: ELISA:1:1000-1:2000, WB:1:200-1:1000, IHC:1:25-1:100,

Restrictions: For Research Use only

Handling

Format: Liquid

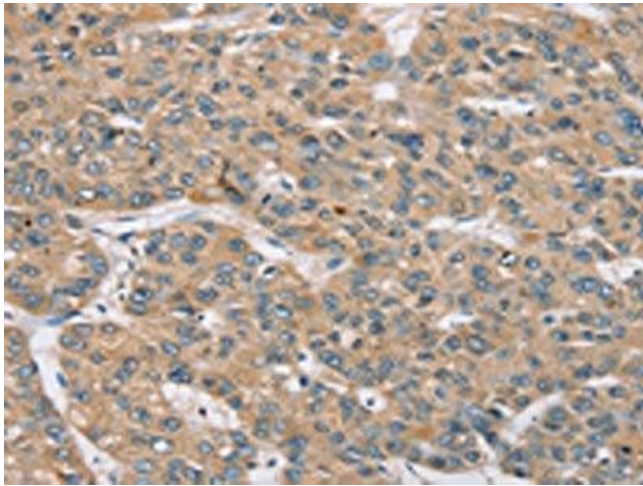
Buffer: -20 °C, pH 7.4 PBS, 0.05 % Sodium azide, 40 % Glycerol

Preservative: Sodium azide

Precaution of Use: This product contains Sodium azide: a POISONOUS AND HAZARDOUS SUBSTANCE which should be handled by trained staff only.

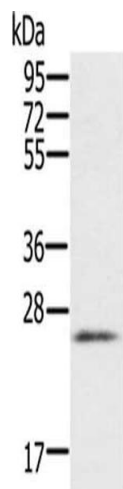
Storage: -20 °C, -80 °C

Storage Comment: Upon receipt, store at -20°C or -80°C. Avoid repeated freeze.



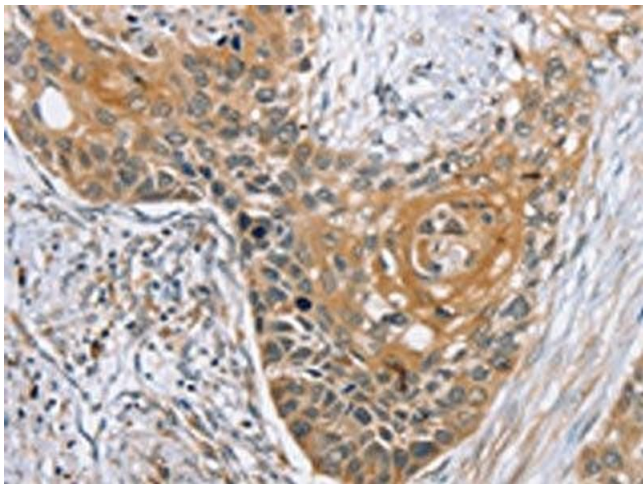
Immunohistochemistry

Image 1. The image on the left is immunohistochemistry of paraffin-embedded Human liver cancer tissue using ABIN7192155(RBM38 Antibody) at dilution 1/35, on the right is treated with synthetic peptide. (Original magnification: x200)



Western Blotting

Image 2. Gel: 10 % SDS-PAGE, Lysate: 40 µg, Lane: Human heart tissue, Primary antibody: ABIN7192155(RBM38 Antibody) at dilution 1/200, Secondary antibody: Goat anti rabbit IgG at 1/8000 dilution, Exposure time: 1 minute



Immunohistochemistry

Image 3. The image on the left is immunohistochemistry of paraffin-embedded Human esophagus cancer tissue using ABIN7192155(RBM38 Antibody) at dilution 1/35, on the right is treated with synthetic peptide. (Original magnification: x200)