

Datasheet for ABIN7192170

anti-RERE antibody**2** Images[Go to Product page](#)

Overview

Quantity:	100 µL
Target:	RERE
Reactivity:	Human
Host:	Rabbit
Clonality:	Polyclonal
Application:	ELISA, Immunohistochemistry (IHC)

Product Details

Immunogen:	Synthetic peptide of Human RERE
Isotype:	IgG
Cross-Reactivity:	Human, Mouse, Rat
Purification:	Antigen affinity purification

Target Details

Target:	RERE
Alternative Name:	RERE (RERE Products)
Background:	Background: This gene encodes a member of the atrophin family of arginine-glutamic acid (RE) dipeptide repeat-containing proteins. The encoded protein co-localizes with a transcription factor in the nucleus, and its overexpression triggers apoptosis. A similar protein in mouse associates with histone deacetylase and is thought to function as a transcriptional co-repressor during embryonic development. Multiple transcript variants encoding different isoforms have

Target Details

been found for this gene.

Aliases: 1110033A15Rik antibody, A1414665 antibody, ARG antibody, arginine glutamic acid dipeptide (RE) repeats antibody, arginine glutamic acid dipeptide repeats antibody, Arginine glutamic acid dipeptide repeats protein antibody, Arginine-glutamic acid dipeptide repeats protein antibody, ARGININE-GLUTAMIC ACID REPEATS-ENCODING GENE antibody, ARP antibody, ATN1L antibody, Atr2 antibody, atrophin 1 like antibody, Atrophin 1 like protein antibody, Atrophin 1 related protein antibody, atrophin 2 antibody, atrophin related protein antibody, ATROPHIN-1-ASSOCIATED PROTEIN antibody, Atrophin-1-like protein antibody, Atrophin-1-related protein antibody, atrophin-2 antibody, ATROPHIN-RELATED PROTEIN antibody, AW742570 antibody, DNB1 antibody, FLJ38775 antibody, KIAA0458 antibody, mKIAA0458 antibody, NEDBEH antibody, OTTHUMP00000001701 antibody, Rere antibody, RERE_HUMAN antibody

UniProt: [Q9P2R6](#)

Pathways: [Protein targeting to Nucleus](#)

Application Details

Application Notes: ELISA:1:2000-1:5000, IHC:1:25-1:100,

Restrictions: For Research Use only

Handling

Format: Liquid

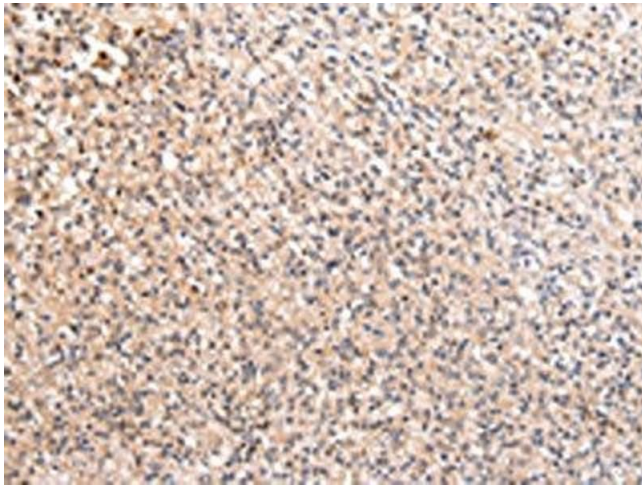
Buffer: -20 °C, pH 7.4 PBS, 0.05 % Sodium azide, 40 % Glycerol

Preservative: Sodium azide

Precaution of Use: This product contains Sodium azide: a POISONOUS AND HAZARDOUS SUBSTANCE which should be handled by trained staff only.

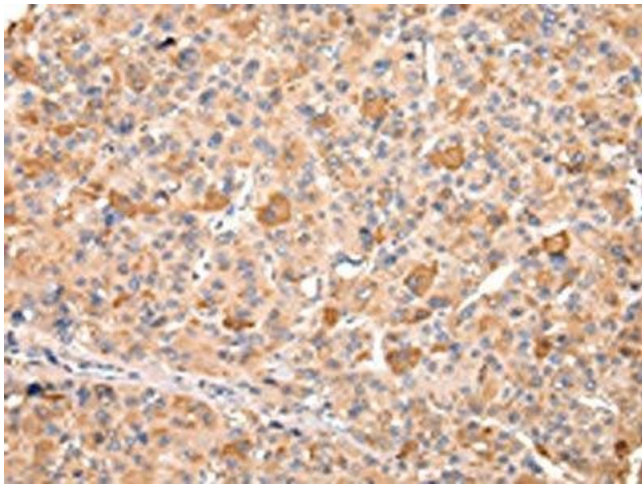
Storage: -20 °C, -80 °C

Storage Comment: Upon receipt, store at -20°C or -80°C. Avoid repeated freeze.



Immunohistochemistry

Image 1. The image on the left is immunohistochemistry of paraffin-embedded Human prostate cancer tissue using ABIN7192170(RERE Antibody) at dilution 1/20, on the right is treated with synthetic peptide. (Original magnification: x200)



Immunohistochemistry

Image 2. The image on the left is immunohistochemistry of paraffin-embedded Human liver cancer tissue using ABIN7192170(RERE Antibody) at dilution 1/20, on the right is treated with synthetic peptide. (Original magnification: x200)