

Datasheet for ABIN7192186  
**anti-RHOBTB2 antibody**[Go to Product page](#)

## 1 Image

## Overview

Quantity:	100 µL
Target:	RHOBTB2
Reactivity:	Human
Host:	Rabbit
Clonality:	Polyclonal
Conjugate:	This RHOBTB2 antibody is un-conjugated
Application:	ELISA, Immunohistochemistry (IHC)

## Product Details

Immunogen:	Synthetic peptide of Human RHOBTB2
Isotype:	IgG
Cross-Reactivity:	Human, Mouse, Rat
Purification:	Antigen affinity purification

## Target Details

Target:	RHOBTB2
Alternative Name:	RHOBTB2 ( <a href="#">RHOBTB2 Products</a> )
Background:	Background: The protein encoded by this gene is a small Rho GTPase and a candidate tumor suppressor. The encoded protein interacts with the cullin-3 protein, a ubiquitin E3 ligase necessary for mitotic cell division. This protein inhibits the growth and spread of some types of breast cancer. Three transcript variants encoding different isoforms have been found for this

## Target Details

gene.

Aliases: DBC 2 antibody, Deleted in breast cancer 2 antibody, Deleted in breast cancer 2 gene protein antibody, p83 antibody, RHBT2\_HUMAN antibody, Rho related BTB domain containing 2 antibody, Rho related BTB domain containing protein 2 antibody, Rho-related BTB domain-containing protein 2 antibody, RHOBTB 2 antibody, Rhobtb2 antibody

UniProt: [Q9BYZ6](#)

## Application Details

Application Notes: ELISA:1:1000-1:2000, IHC:1:25-1:100,

Restrictions: For Research Use only

## Handling

Format: Liquid

Buffer: -20 °C, pH 7.4 PBS, 0.05 % Sodium azide, 40 % Glycerol

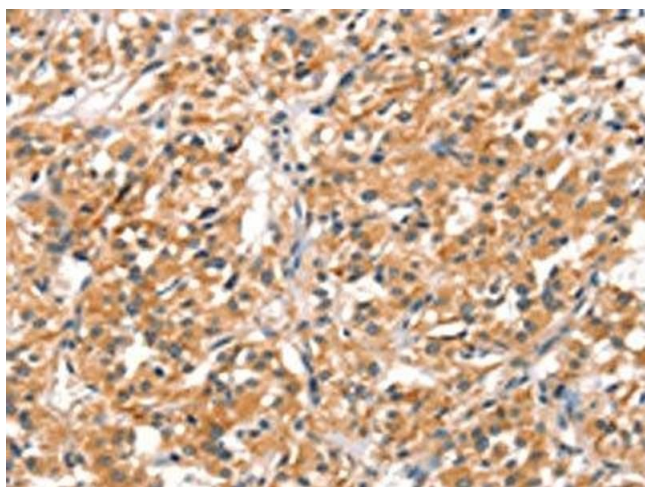
Preservative: Sodium azide

Precaution of Use: This product contains Sodium azide: a POISONOUS AND HAZARDOUS SUBSTANCE which should be handled by trained staff only.

Storage: -20 °C,-80 °C

Storage Comment: Upon receipt, store at -20°C or -80°C. Avoid repeated freeze.

## Images



### Immunohistochemistry

**Image 1.** The image on the left is immunohistochemistry of paraffin-embedded Human thyroid cancer tissue using ABIN7192186(RHOBTB2 Antibody) at dilution 1/30, on the right is treated with synthetic peptide. (Original magnification: x200)