

Datasheet for ABIN7192258
anti-SAMD4B antibody



[Go to Product page](#)

1 Image

Overview

Quantity:	100 µL
Target:	SAMD4B
Reactivity:	Human
Host:	Rabbit
Clonality:	Polyclonal
Conjugate:	This SAMD4B antibody is un-conjugated
Application:	ELISA, Immunohistochemistry (IHC)

Product Details

Immunogen:	Synthetic peptide of Human SAMD4B
Isotype:	IgG
Cross-Reactivity:	Human, Mouse
Purification:	Antigen affinity purification

Target Details

Target:	SAMD4B
Alternative Name:	SAMD4B (SAMD4B Products)
Background:	Background: SMGB, hSmaug2 Aliases: SAMD4B antibody, SMAUG2 antibody, Protein Smaug homolog 2 antibody, Smaug 2 antibody, hSmaug2 antibody, Sterile alpha motif domain-containing protein 4B antibody, SAM domain-containing protein 4B antibody

Target Details

UniProt: [Q5PRF9](#)

Application Details

Application Notes: ELISA:1:1000-1:2000, IHC:1:10-1:50,

Restrictions: For Research Use only

Handling

Format: Liquid

Buffer: -20 °C, pH 7.4 PBS, 0.05 % Sodium azide, 40 % Glycerol

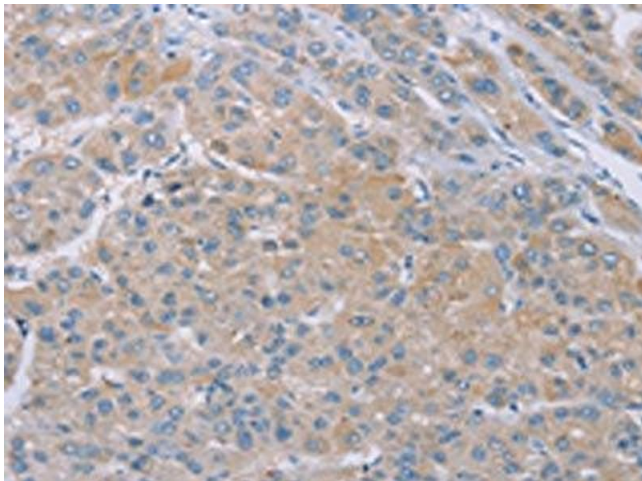
Preservative: Sodium azide

Precaution of Use: This product contains Sodium azide: a POISONOUS AND HAZARDOUS SUBSTANCE which should be handled by trained staff only.

Storage: -20 °C,-80 °C

Storage Comment: Upon receipt, store at -20°C or -80°C. Avoid repeated freeze.

Images



Immunohistochemistry

Image 1. The image on the left is immunohistochemistry of paraffin-embedded Human liver cancer tissue using ABIN7192258(SAMD4B Antibody) at dilution 1/20, on the right is treated with synthetic peptide. (Original magnification: x200)