

Datasheet for ABIN7192291

anti-SDC3 antibody**3** Images[Go to Product page](#)

Overview

Quantity:	100 µL
Target:	SDC3
Reactivity:	Human
Host:	Rabbit
Clonality:	Polyclonal
Conjugate:	This SDC3 antibody is un-conjugated
Application:	ELISA, Western Blotting (WB), Immunohistochemistry (IHC)

Product Details

Immunogen:	Synthetic peptide of Human SDC3
Isotype:	IgG
Cross-Reactivity:	Human, Mouse, Rat
Purification:	Antigen affinity purification

Target Details

Target:	SDC3
Alternative Name:	SDC3 (SDC3 Products)
Background:	Background: The protein encoded by this gene belongs to the syndecan proteoglycan family. It may play a role in the organization of cell shape by affecting the actin cytoskeleton, possibly by transferring signals from the cell surface in a sugar-dependent mechanism. Allelic variants of this gene have been associated with obesity.

Target Details

Aliases: N-syndecan antibody, Sdc3 antibody, SDC3_HUMAN antibody, SDCN antibody, SYND3 antibody, Syndecan neural type antibody, syndecan proteoglycan 3 antibody, Syndecan-3 antibody

UniProt: [O75056](#)

Pathways: [Glycosaminoglycan Metabolic Process](#)

Application Details

Application Notes: ELISA:1:1000-1:2000, WB:1:200-1:1000, IHC:1:25-1:100,

Restrictions: For Research Use only

Handling

Format: Liquid

Buffer: -20 °C, pH 7.4 PBS, 0.05 % Sodium azide, 40 % Glycerol

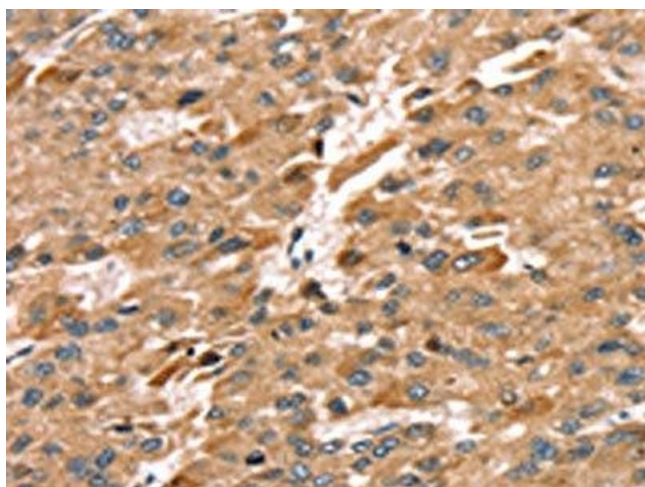
Preservative: Sodium azide

Precaution of Use: This product contains Sodium azide: a POISONOUS AND HAZARDOUS SUBSTANCE which should be handled by trained staff only.

Storage: -20 °C, -80 °C

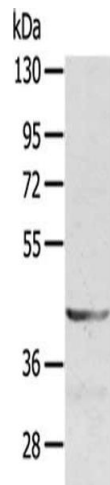
Storage Comment: Upon receipt, store at -20°C or -80°C. Avoid repeated freeze.

Images



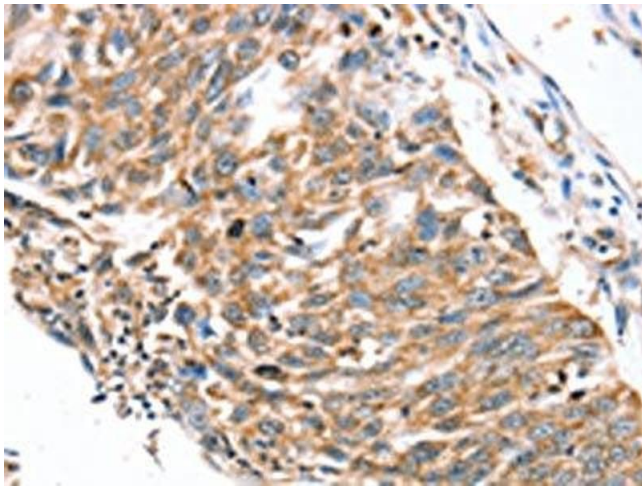
Immunohistochemistry

Image 1. The image on the left is immunohistochemistry of paraffin-embedded Human liver cancer tissue using ABIN7192291(SDC3 Antibody) at dilution 1/30, on the right is treated with synthetic peptide. (Original magnification: x200)



Western Blotting

Image 2. Gel: 8 % SDS-PAGE, Lysate: 40 µg, Lane: Jurkat cells, Primary antibody: ABIN7192291(SDC3 Antibody) at dilution 1/400, Secondary antibody: Goat anti rabbit IgG at 1/8000 dilution, Exposure time: 2 minutes



Immunohistochemistry

Image 3. The image on the left is immunohistochemistry of paraffin-embedded Human lung cancer tissue using ABIN7192291(SDC3 Antibody) at dilution 1/30, on the right is treated with synthetic peptide. (Original magnification: x200)