

Datasheet for ABIN7192302

anti-SEMA6D antibody[Go to Product page](#)**1** Image

Overview

Quantity:	100 µL
Target:	SEMA6D
Reactivity:	Human
Host:	Rabbit
Clonality:	Polyclonal
Conjugate:	This SEMA6D antibody is un-conjugated
Application:	ELISA, Immunohistochemistry (IHC)

Product Details

Immunogen:	Synthetic peptide of Human SEMA6D
Isotype:	IgG
Cross-Reactivity:	Human, Mouse
Purification:	Antigen affinity purification

Target Details

Target:	SEMA6D
Alternative Name:	SEMA6D (SEMA6D Products)
Background:	Background: Semaphorins are a large family, including both secreted and membrane associated proteins, many of which have been implicated as inhibitors or chemorepellents in axon pathfinding, fasciculation and branching, and target selection. All semaphorins possess a semaphorin (Sema) domain and a PSI domain (found in plexins, semaphorins and integrins) in

Target Details

the N-terminal extracellular portion. Additional sequence motifs C-terminal to the semaphorin domain allow classification into distinct subfamilies.

Aliases: SEMA6D antibody, KIAA1479 antibody, Semaphorin-6D antibody

UniProt: [Q8NFY4](#)

Pathways: [Smooth Muscle Cell Migration](#)

Application Details

Application Notes: ELISA:1:1000-1:2000, IHC:1:25-1:100,

Restrictions: For Research Use only

Handling

Format: Liquid

Buffer: -20 °C, pH 7.4 PBS, 0.05 % Sodium azide, 40 % Glycerol

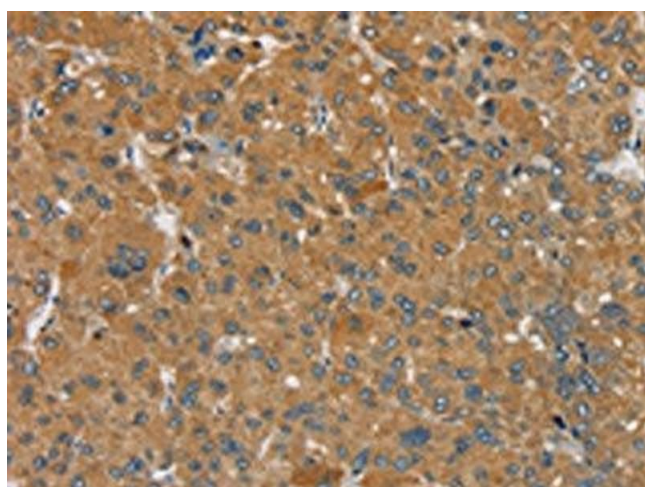
Preservative: Sodium azide

Precaution of Use: This product contains Sodium azide: a POISONOUS AND HAZARDOUS SUBSTANCE which should be handled by trained staff only.

Storage: -20 °C, -80 °C

Storage Comment: Upon receipt, store at -20°C or -80°C. Avoid repeated freeze.

Images



Immunohistochemistry

Image 1. The image on the left is immunohistochemistry of paraffin-embedded Human liver cancer tissue using ABIN7192302(SEMA6D Antibody) at dilution 1/25, on the right is treated with synthetic peptide. (Original magnification: x200)