



[Go to Product page](#)

Datasheet for ABIN7192312  
**anti-Selenoprotein N antibody**

3 Images

Overview

Quantity:	100 µL
Target:	Selenoprotein N (SELENON)
Reactivity:	Human
Host:	Rabbit
Clonality:	Polyclonal
Conjugate:	This Selenoprotein N antibody is un-conjugated
Application:	ELISA, Western Blotting (WB), Immunohistochemistry (IHC)

Product Details

Immunogen:	Synthetic peptide of Human SEPN1
Isotype:	IgG
Cross-Reactivity:	Human
Purification:	Antigen affinity purification

Target Details

Target:	Selenoprotein N (SELENON)
Alternative Name:	SELENON ( <a href="#">SELENON Products</a> )
Background:	Background: This gene encodes a selenoprotein, which contains a selenocysteine (Sec) residue at its active site. The selenocysteine is encoded by the UGA codon that normally signals translation termination. The 3' UTR of selenoprotein genes have a common stem-loop structure, the sec insertion sequence (SECIS), that is necessary for the recognition of UGA as a

## Target Details

Sec codon rather than as a stop signal. Mutations in this gene cause the classical phenotype of multimimicore disease and congenital muscular dystrophy with spinal rigidity and restrictive respiratory syndrome.

Aliases: CFTD antibody, MDRS1 antibody, RSMD1 antibody, RSS antibody, Selenoprotein N antibody, Selenoprotein N, 1 antibody, SelN antibody, SELN\_HUMAN antibody, sepn1 antibody

UniProt: [Q9NZV5](#)

## Application Details

Application Notes: ELISA:1:2000-1:5000, WB:1:500-1:2000, IHC:1:25-1:100,

Restrictions: For Research Use only

## Handling

Format: Liquid

Buffer: -20 °C, pH 7.4 PBS, 0.05 % Sodium azide, 40 % Glycerol

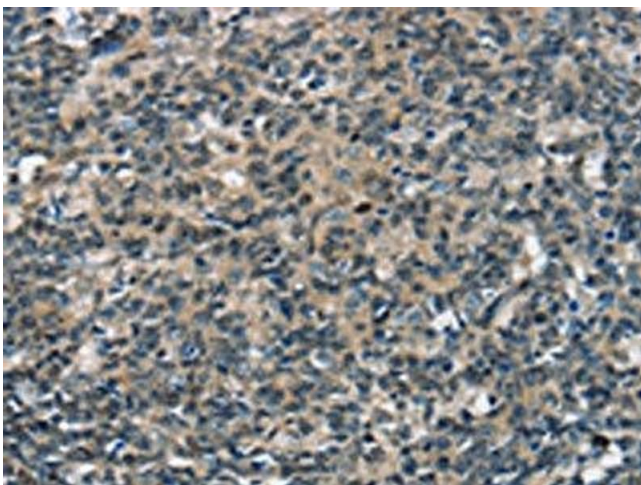
Preservative: Sodium azide

Precaution of Use: This product contains Sodium azide: a POISONOUS AND HAZARDOUS SUBSTANCE which should be handled by trained staff only.

Storage: -20 °C,-80 °C

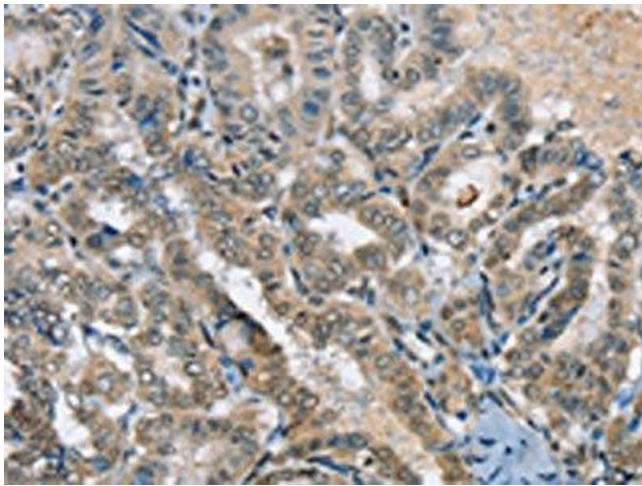
Storage Comment: Upon receipt, store at -20°C or -80°C. Avoid repeated freeze.

## Images



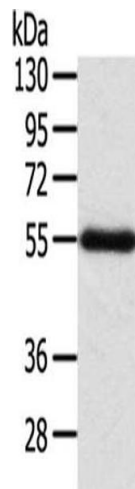
### Immunohistochemistry

**Image 1.** The image on the left is immunohistochemistry of paraffin-embedded Human tonsil tissue using ABIN7192312(SEPN1 Antibody) at dilution 1/20, on the right is treated with synthetic peptide. (Original magnification: x200)



### Immunohistochemistry

**Image 2.** The image on the left is immunohistochemistry of paraffin-embedded Human thyroid cancer tissue using ABIN7192312(SEPN1 Antibody) at dilution 1/20, on the right is treated with synthetic peptide. (Original magnification: x200)



### Western Blotting

**Image 3.** Gel: 8 % SDS-PAGE, Lysate: 60 µg, Lane: Human placenta tissue, Primary antibody: ABIN7192312(SEPN1 Antibody) at dilution 1/200, Secondary antibody: Goat anti rabbit IgG at 1/8000 dilution, Exposure time: 2 minutes