

Datasheet for ABIN7192337

anti-SEZ6L antibody**1** Image[Go to Product page](#)

Overview

Quantity:	100 µL
Target:	SEZ6L
Reactivity:	Human
Host:	Rabbit
Clonality:	Polyclonal
Conjugate:	This SEZ6L antibody is un-conjugated
Application:	ELISA, Immunohistochemistry (IHC)

Product Details

Immunogen:	Synthetic peptide of Human SEZ6L
Isotype:	IgG
Cross-Reactivity:	Human, Mouse
Purification:	Antigen affinity purification

Target Details

Target:	SEZ6L
Alternative Name:	SEZ6L (SEZ6L Products)
Background:	Background: SEZ6L (seizure related 6 homolog-like) is a 1,024 amino acid single-pass type I membrane protein that localizes to the endoplasmic reticulum. Widely expressed, SEZ6L is a candidate tumor suppressor gene and may contribute to specialized endoplasmic reticulum functions in neurons. SEZ6L contains three CUB domains and five sushi (CCP/SCR) domains,

Target Details

which may be involved in protein-protein interactions and signal transduction. The gene encoding SEZ6L is located on human chromosome 22, which houses over 500 genes and is the second smallest human chromosome. Mutations in several of the genes that map to chromosome 22 are involved in the development of Phelan-McDermid syndrome, Neurofibromatosis type 2, autism and schizophrenia.

Aliases: SEZ6L antibody, KIAA0927 antibody, UNQ2542/PRO6094Seizure 6-like protein antibody

UniProt: [Q9BYH1](#)

Application Details

Application Notes: ELISA:1:1000-1:2000, IHC:1:25-1:100,

Restrictions: For Research Use only

Handling

Format: Liquid

Buffer: -20 °C, pH 7.4 PBS, 0.05 % Sodium azide, 40 % Glycerol

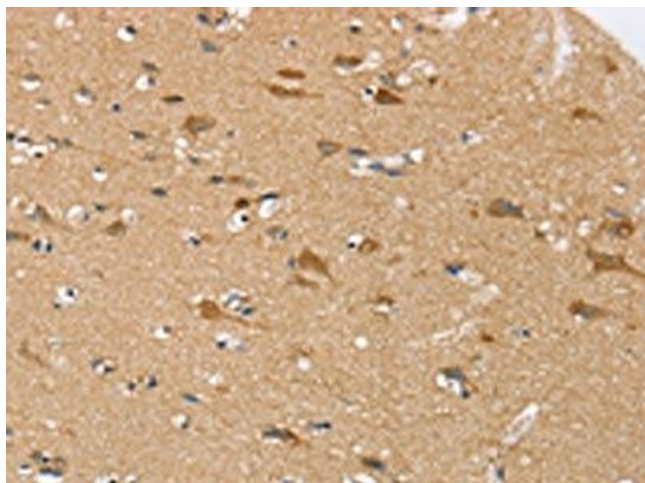
Preservative: Sodium azide

Precaution of Use: This product contains Sodium azide: a POISONOUS AND HAZARDOUS SUBSTANCE which should be handled by trained staff only.

Storage: -20 °C,-80 °C

Storage Comment: Upon receipt, store at -20°C or -80°C. Avoid repeated freeze.

Images



Immunohistochemistry

Image 1. The image on the left is immunohistochemistry of paraffin-embedded Human brain tissue using ABIN7192337(SEZ6L Antibody) at dilution 1/30, on the right is treated with synthetic peptide. (Original magnification: x200)