

Datasheet for ABIN7192347
anti-SGPL1 antibody



[Go to Product page](#)

3 Images

Overview

Quantity:	100 µL
Target:	SGPL1
Reactivity:	Human
Host:	Rabbit
Clonality:	Polyclonal
Conjugate:	This SGPL1 antibody is un-conjugated
Application:	Western Blotting (WB), Immunohistochemistry (IHC), ELISA

Product Details

Immunogen:	Synthetic peptide of Human SGPL1
Isotype:	IgG
Cross-Reactivity:	Human, Mouse, Rat
Purification:	Antigen affinity purification

Target Details

Target:	SGPL1
Alternative Name:	SGPL1 (SGPL1 Products)
Background:	Background: Sphingosine-1-phosphate lyase 1 is an enzyme that in humans is encoded by the SGPL1 gene. Cleaves phosphorylated sphingoid bases (PSBs), such as sphingosine-1-phosphate, into fatty aldehydes and phosphoethanolamine. Elevates stress-induced ceramide production and apoptosis.

Target Details

Aliases: FLJ13811 antibody, hSPL antibody, KIAA1252 antibody, S1P antibody, S1PL antibody, SGPL 1 antibody, SGPL1 antibody, SGPL1_HUMAN antibody, SP lyase antibody, SP-lyase 1 antibody, Sphingosine 1 phosphate aldolase antibody, Sphingosine 1 phosphate lyase 1 antibody, Sphingosine-1-phosphate aldolase antibody, Sphingosine-1-phosphate lyase 1 antibody, SPL 1 antibody, SPL antibody

UniProt: [O95470](#)

Pathways: [Platelet-derived growth Factor Receptor Signaling](#)

Application Details

Application Notes: ELISA:1:1000-1:2000, WB:1:200-1:1000, IHC:1:25-1:100,

Restrictions: For Research Use only

Handling

Format: Liquid

Buffer: -20 °C, pH 7.4 PBS, 0.05 % Sodium azide, 40 % Glycerol

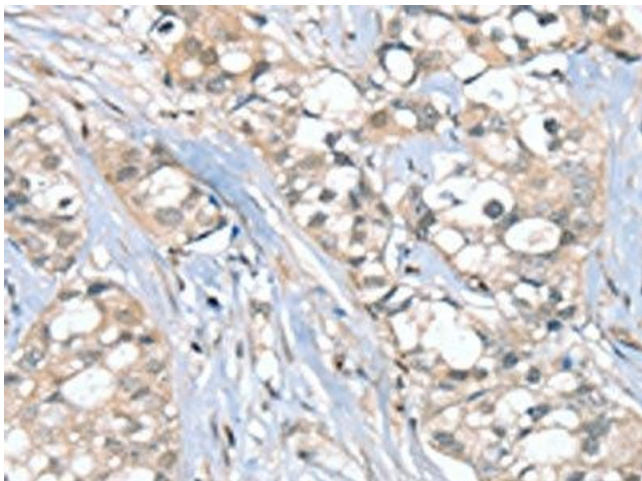
Preservative: Sodium azide

Precaution of Use: This product contains Sodium azide: a POISONOUS AND HAZARDOUS SUBSTANCE which should be handled by trained staff only.

Storage: -20 °C,-80 °C

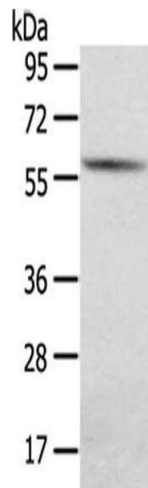
Storage Comment: Upon receipt, store at -20°C or -80°C. Avoid repeated freeze.

Images



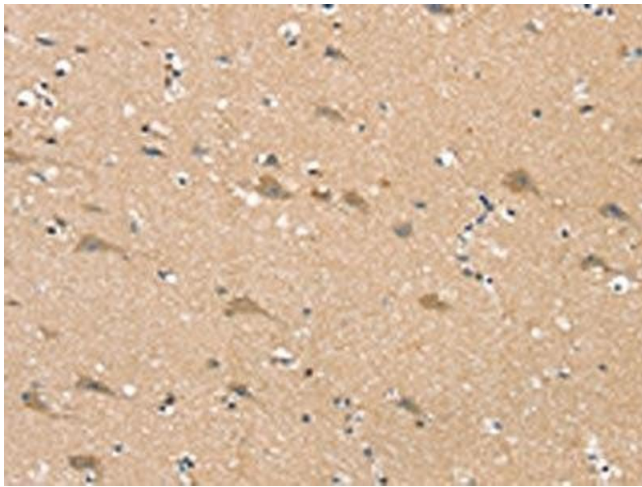
Immunohistochemistry

Image 1. The image on the left is immunohistochemistry of paraffin-embedded Human breast cancer tissue using ABIN7192347(SGPL1 Antibody) at dilution 1/25, on the right is treated with synthetic peptide. (Original magnification: x200)



Western Blotting

Image 2. Gel: 8 % SDS-PAGE, Lysate: 40 µg, Primary antibody: ABIN7192347(SGPL1 Antibody) at dilution 1/200 dilution, Secondary antibody: Goat anti rabbit IgG at 1/8000 dilution, Exposure time: 1 second



Immunohistochemistry

Image 3. The image on the left is immunohistochemistry of paraffin-embedded Human brain tissue using ABIN7192347(SGPL1 Antibody) at dilution 1/25, on the right is treated with synthetic peptide. (Original magnification: x200)