

Datasheet for ABIN7192349

anti-SH2B2 antibody**2** Images[Go to Product page](#)

Overview

Quantity:	100 µL
Target:	SH2B2
Reactivity:	Human
Host:	Rabbit
Clonality:	Polyclonal
Conjugate:	This SH2B2 antibody is un-conjugated
Application:	ELISA, Immunohistochemistry (IHC)

Product Details

Immunogen:	Synthetic peptide of Human SH2B2
Isotype:	IgG
Cross-Reactivity:	Human, Rat
Purification:	Antigen affinity purification

Target Details

Target:	SH2B2
Alternative Name:	SH2B2 (SH2B2 Products)
Background:	Background: The protein encoded by this gene is expressed in B lymphocytes and contains pleckstrin homology and src homology 2 (SH2) domains. In Burkitt's lymphoma cell lines, it is tyrosine-phosphorylated in response to B cell receptor stimulation. Because it binds Shc independent of stimulation and Grb2 after stimulation, it appears to play a role in signal

Target Details

transduction from the receptor to the Shc/Grb2 pathway.

Aliases: SH2B2 antibody, APS antibody, SH2B adapter protein 2 antibody, Adapter protein with pleckstrin homology and Src homology 2 domains antibody, SH2 and PH domain-containing adapter protein APS antibody

UniProt: [O14492](#)

Pathways: [Carbohydrate Homeostasis](#), [Brown Fat Cell Differentiation](#)

Application Details

Application Notes: ELISA:1:1000-1:2000, IHC:1:25-1:100,

Restrictions: For Research Use only

Handling

Format: Liquid

Buffer: -20 °C, pH 7.4 PBS, 0.05 % Sodium azide, 40 % Glycerol

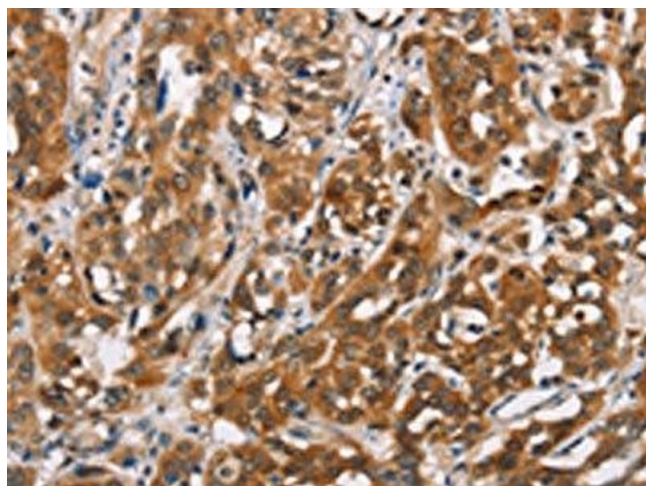
Preservative: Sodium azide

Precaution of Use: This product contains Sodium azide: a POISONOUS AND HAZARDOUS SUBSTANCE which should be handled by trained staff only.

Storage: -20 °C, -80 °C

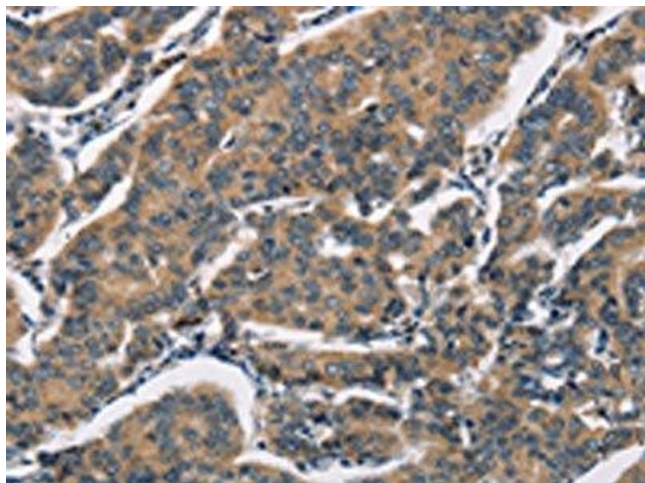
Storage Comment: Upon receipt, store at -20°C or -80°C. Avoid repeated freeze.

Images



Immunohistochemistry

Image 1. The image on the left is immunohistochemistry of paraffin-embedded Human esophagus cancer tissue using ABIN7192349 (SH2B2 Antibody) at dilution 1/30, on the right is treated with synthetic peptide. (Original magnification: x200)



Immunohistochemistry

Image 2. The image on the left is immunohistochemistry of paraffin-embedded Human breast cancer tissue using ABIN7192349(SH2B2 Antibody) at dilution 1/30, on the right is treated with synthetic peptide. (Original magnification: x200)