

Datasheet for ABIN7192372  
**anti-SIGLEC8 antibody**



[Go to Product page](#)

2 Images

## Overview

Quantity:	100 µL
Target:	SIGLEC8
Reactivity:	Human
Host:	Rabbit
Clonality:	Polyclonal
Conjugate:	This SIGLEC8 antibody is un-conjugated
Application:	ELISA, Immunohistochemistry (IHC)

## Product Details

Immunogen:	Synthetic peptide of Human SIGLEC8
Isotype:	IgG
Cross-Reactivity:	Human
Purification:	Antigen affinity purification

## Target Details

Target:	SIGLEC8
Alternative Name:	SIGLEC8 ( <a href="#">SIGLEC8 Products</a> )
Background:	Background: Sialic acid-binding immunoglobulin (Ig)-like lectins, or SIGLECs (e.g., CD33 (MIM 159590)), are a family of type 1 transmembrane proteins each having a unique expression pattern, mostly in hemopoietic cells. SIGLEC8 is a member of the CD33-like subgroup of SIGLECs, which are localized to 19q13.3-q13.4 and have 2 conserved cytoplasmic tyrosine-

## Target Details

based motifs: an immunoreceptor tyrosine-based inhibitory motif, or ITIM (see MIM 604964), and a motif homologous to one identified in signaling lymphocyte activation molecule (SLAM, MIM 603492) that mediates an association with SLAM-associated protein (SAP, MIM 300490) (summarized by Foussias et al., 2000 [PubMed 11095983]).

Aliases: CD329 antigen antibody, CDw329 antibody, SAF 2 antibody, SAF-2 antibody, SAF2 antibody, Sialic acid binding Ig like lectin 8 antibody, Sialic acid-binding Ig-like lectin 8 antibody, Sialoadhesin family member 2 antibody, SIGL8\_HUMAN antibody, Siglec 8 antibody, Siglec-8 antibody, SIGLEC8 antibody, SIGLEC8L antibody

UniProt: [Q9NYZ4](#)

## Application Details

Application Notes: ELISA:1:2000-1:5000, IHC:1:25-1:100,

Restrictions: For Research Use only

## Handling

Format: Liquid

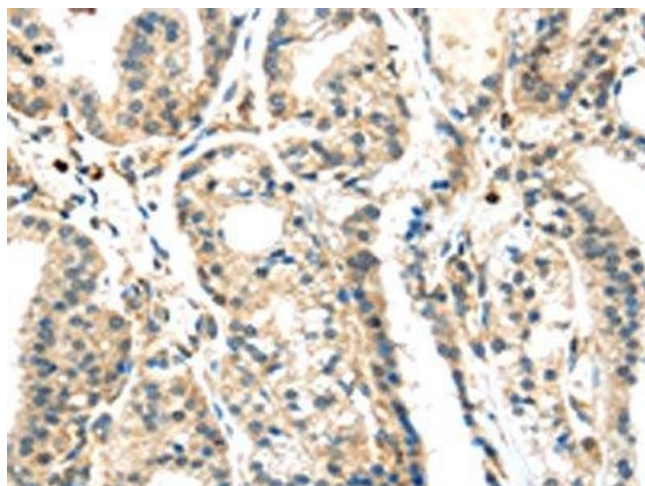
Buffer: -20 °C, pH 7.4 PBS, 0.05 % Sodium azide, 40 % Glycerol

Preservative: Sodium azide

Precaution of Use: This product contains Sodium azide: a POISONOUS AND HAZARDOUS SUBSTANCE which should be handled by trained staff only.

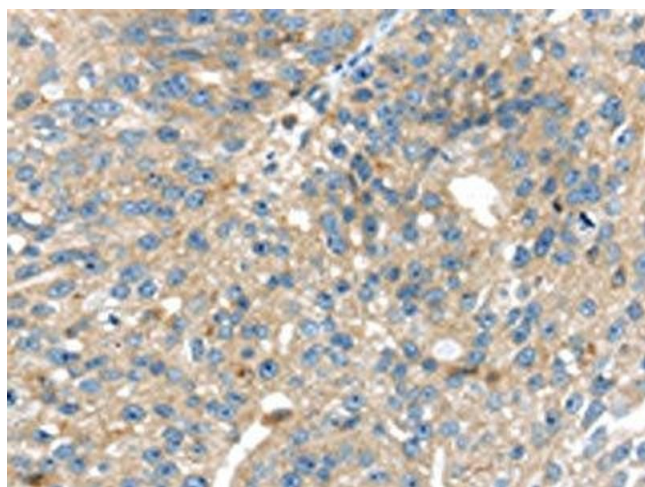
Storage: -20 °C,-80 °C

Storage Comment: Upon receipt, store at -20°C or -80°C. Avoid repeated freeze.



#### Immunohistochemistry

**Image 1.** The image on the left is immunohistochemistry of paraffin-embedded Human thyroid cancer tissue using ABIN7192372(SIGLEC8 Antibody) at dilution 1/25, on the right is treated with synthetic peptide. (Original magnification: x200)



#### Immunohistochemistry

**Image 2.** The image on the left is immunohistochemistry of paraffin-embedded Human breast cancer tissue using ABIN7192372(SIGLEC8 Antibody) at dilution 1/25, on the right is treated with synthetic peptide. (Original magnification: x200)