



Datasheet for ABIN7192395
anti-SLC16A11 antibody



[Go to Product page](#)

3 Images

Overview

Quantity:	100 µL
Target:	SLC16A11
Reactivity:	Human
Host:	Rabbit
Clonality:	Polyclonal
Conjugate:	This SLC16A11 antibody is un-conjugated
Application:	Western Blotting (WB), ELISA, Immunohistochemistry (IHC)

Product Details

Immunogen:	Synthetic peptide of Human SLC16A11
Isotype:	IgG
Cross-Reactivity:	Human, Mouse
Purification:	Antigen affinity purification

Target Details

Target:	SLC16A11
Alternative Name:	SLC16A11 (SLC16A11 Products)
Background:	Background: MCT11 (Monocarboxylate transporter 11), also known as SLC16A11 (Solute carrier family 16 member 11), is a 471 proton-linked monocarboxylate transporter that catalyzes the rapid transport of monocarboxylates across the plasma membrane. Aliases: FLJ90193 antibody, MCT 11 antibody, Monocarboxylate transporter 11 antibody,

Target Details

MOT11_HUMAN antibody, SLC16A11 antibody, Solute carrier family 16 member 11 (monocarboxylic acid transporter 11) antibody, Solute carrier family 16 member 11 antibody

UniProt: [Q8NCK7](#)

Application Details

Application Notes: ELISA:1:1000-1:2000, WB:1:200-1:1000, IHC:1:25-1:100,

Restrictions: For Research Use only

Handling

Format: Liquid

Buffer: -20 °C, pH 7.4 PBS, 0.05 % Sodium azide, 40 % Glycerol

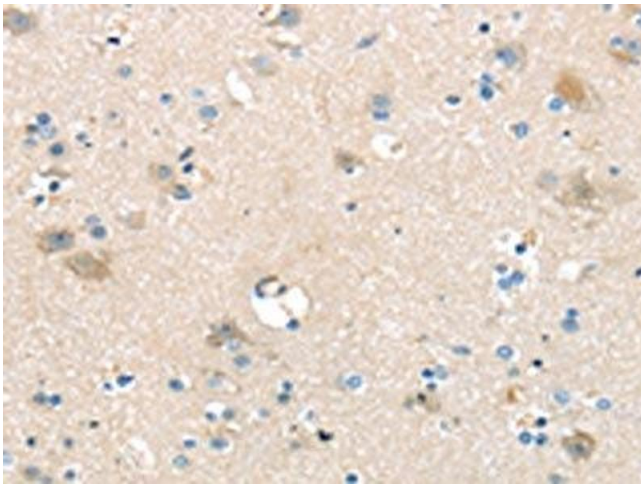
Preservative: Sodium azide

Precaution of Use: This product contains Sodium azide: a POISONOUS AND HAZARDOUS SUBSTANCE which should be handled by trained staff only.

Storage: -20 °C,-80 °C

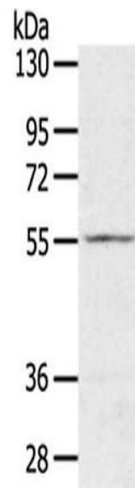
Storage Comment: Upon receipt, store at -20°C or -80°C. Avoid repeated freeze.

Images



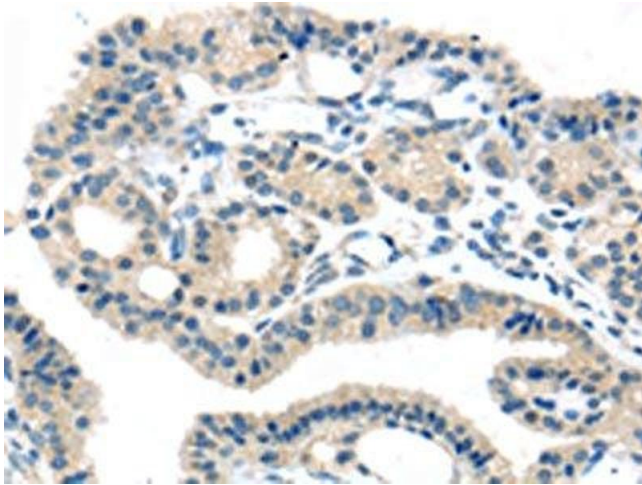
Immunohistochemistry

Image 1. The image on the left is immunohistochemistry of paraffin-embedded Human brain tissue using ABIN7192395(SLC16A11 Antibody) at dilution 1/25, on the right is treated with synthetic peptide. (Original magnification: x200)



Western Blotting

Image 2. Gel: 8 % SDS-PAGE, Lysate: 40 µg, Primary antibody: ABIN7192395 (SLC16A11 Antibody) at dilution 1/200 dilution, Secondary antibody: Goat anti rabbit IgG at 1/8000 dilution, Exposure time: 2 minutes



Immunohistochemistry

Image 3. The image on the left is immunohistochemistry of paraffin-embedded Human thyroid cancer tissue using ABIN7192395 (SLC16A11 Antibody) at dilution 1/25, on the right is treated with synthetic peptide. (Original magnification: x200)