



Datasheet for ABIN7192399  
**anti-SLC16A14 antibody**



[Go to Product page](#)

2 Images

Overview

Quantity:	100 µL
Target:	SLC16A14
Reactivity:	Human
Host:	Rabbit
Clonality:	Polyclonal
Conjugate:	This SLC16A14 antibody is un-conjugated
Application:	ELISA, Immunohistochemistry (IHC)

Product Details

Immunogen:	Synthetic peptide of Human SLC16A14
Isotype:	IgG
Cross-Reactivity:	Human
Purification:	Antigen affinity purification

Target Details

Target:	SLC16A14
Alternative Name:	SLC16A14 ( <a href="#">SLC16A14 Products</a> )
Background:	Background: Proton-linked monocarboxylate transporter. Catalyzes the rapid transport across the plasma membrane of many monocarboxylates  Aliases: FLJ30794 antibody, MCT 14 antibody, MCT14 antibody, Monocarboxylate transporter 14 antibody, MOT14_HUMAN antibody, OTTHUMP00000204389 antibody,

## Target Details

OTTHUMP00000204390 antibody, Slc16a14 antibody, Solute carrier family 16 (monocarboxylic acid transporters), member 14 antibody, Solute carrier family 16 member 14 antibody, Solute carrier family 16, member 14 (monocarboxylic acid transporter 14) antibody

UniProt: [Q7RTX9](#)

## Application Details

Application Notes: ELISA:1:2000-1:5000, IHC:1:100-1:300,

Restrictions: For Research Use only

## Handling

Format: Liquid

Buffer: -20 °C, pH 7.4 PBS, 0.05 % Sodium azide, 40 % Glycerol

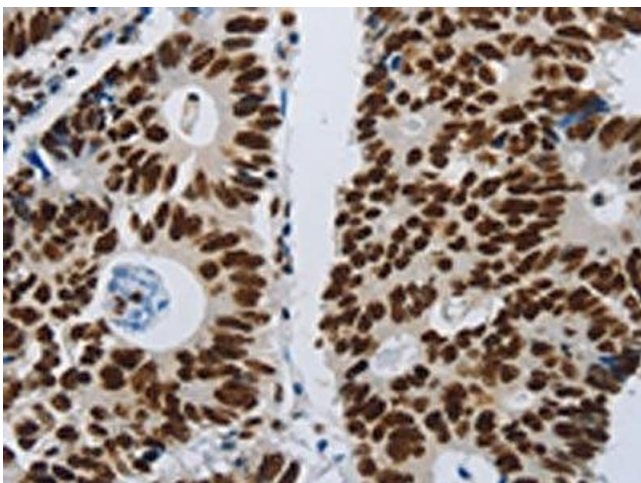
Preservative: Sodium azide

Precaution of Use: This product contains Sodium azide: a POISONOUS AND HAZARDOUS SUBSTANCE which should be handled by trained staff only.

Storage: -20 °C,-80 °C

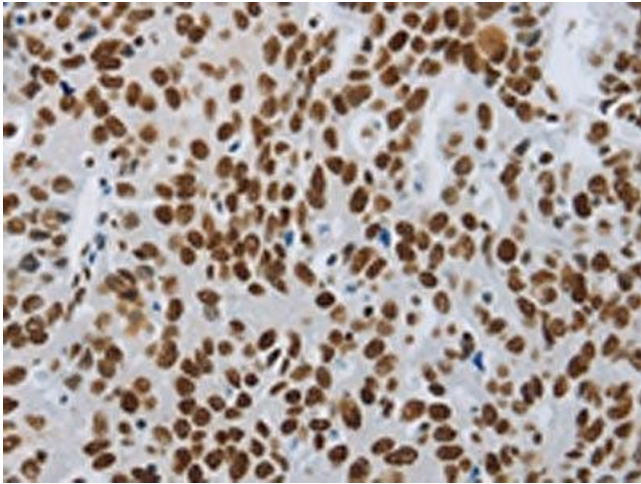
Storage Comment: Upon receipt, store at -20°C or -80°C. Avoid repeated freeze.

## Images



### Immunohistochemistry

**Image 1.** The image on the left is immunohistochemistry of paraffin-embedded Human colon cancer tissue using ABIN7192399(SLC16A14 Antibody) at dilution 1/80, on the right is treated with synthetic peptide. (Original magnification: x200)



### Immunohistochemistry

**Image 2.** The image on the left is immunohistochemistry of paraffin-embedded Human ovarian cancer tissue using ABIN7192399(SLC16A14 Antibody) at dilution 1/80, on the right is treated with synthetic peptide. (Original magnification: x200)