

Datasheet for ABIN7192401
anti-SLC16A3 antibody

3 Images



[Go to Product page](#)

Overview

Quantity:	100 µL
Target:	SLC16A3
Reactivity:	Human
Host:	Rabbit
Clonality:	Polyclonal
Conjugate:	This SLC16A3 antibody is un-conjugated
Application:	Western Blotting (WB), ELISA, Immunohistochemistry (IHC)

Product Details

Immunogen:	Synthetic peptide of Human SLC16A3
Isotype:	IgG
Cross-Reactivity:	Human, Mouse, Rat
Purification:	Antigen affinity purification

Target Details

Target:	SLC16A3
Alternative Name:	SLC16A3 (SLC16A3 Products)
Background:	Background: Lactic acid and pyruvate transport across plasma membranes is catalyzed by members of the proton-linked monocarboxylate transporter (MCT) family, which has been designated solute carrier family-16. Each MCT appears to have slightly different substrate and inhibitor specificities and transport kinetics, which are related to the metabolic requirements of

Target Details

the tissues in which it is found. The MCTs, which include MCT1 (SLC16A1, MIM 600682) and MCT2 (SLC16A7, MIM 603654), are characterized by 12 predicted transmembrane domains.
Aliases: MCT 4 antibody, MCT3 antibody, MCT4 antibody, Monocarboxylate transporter 3 antibody, Monocarboxylate transporter 4 antibody, MOT4_HUMAN antibody, SLC16A3 antibody, Solute carrier family 16 member 3 antibody

UniProt: [O15427](#)

Pathways: [Warburg Effect](#)

Application Details

Application Notes: ELISA:1:2000-1:5000, WB:1:500-1:2000, IHC:1:30-1:150,

Restrictions: For Research Use only

Handling

Format: Liquid

Buffer: -20 °C, pH 7.4 PBS, 0.05 % Sodium azide, 40 % Glycerol

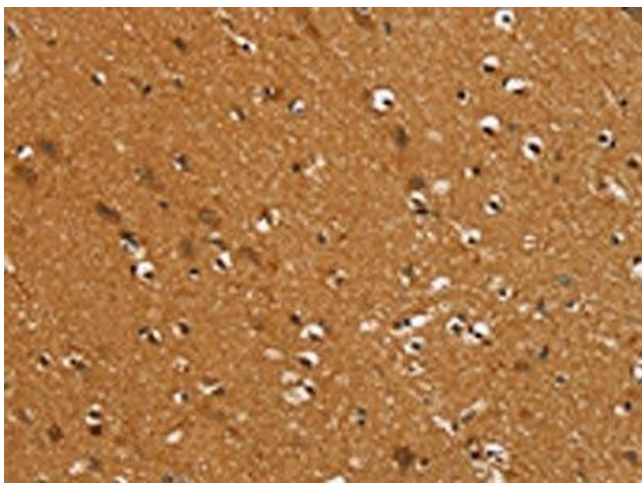
Preservative: Sodium azide

Precaution of Use: This product contains Sodium azide: a POISONOUS AND HAZARDOUS SUBSTANCE which should be handled by trained staff only.

Storage: -20 °C,-80 °C

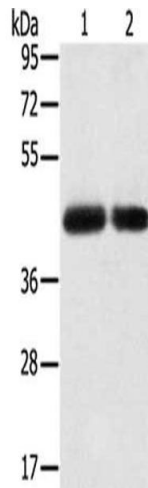
Storage Comment: Upon receipt, store at -20°C or -80°C. Avoid repeated freeze.

Images



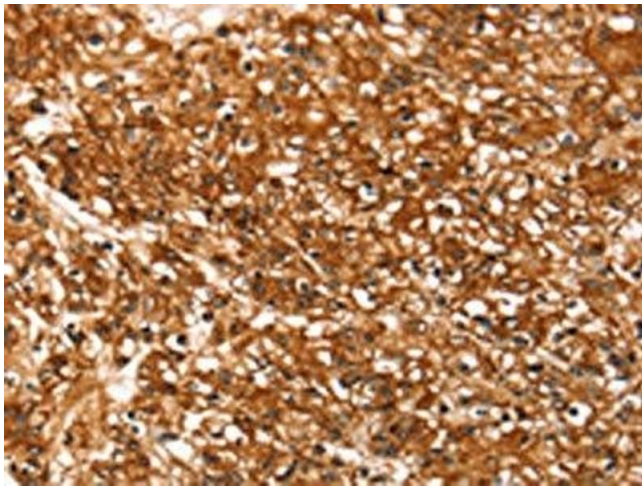
Immunohistochemistry

Image 1. The image on the left is immunohistochemistry of paraffin-embedded Human brain tissue using ABIN7192401(SLC16A3 Antibody) at dilution 1/30, on the right is treated with synthetic peptide. (Original magnification: x200)



Western Blotting

Image 2. Gel: 8 % SDS-PAGE, Lysate: 40 µg, Lane 1-2: PC3 cells, hepg2 cells, Primary antibody: ABIN7192401(SLC16A3 Antibody) at dilution 1/200, Secondary antibody: Goat anti rabbit IgG at 1/8000 dilution, Exposure time: 2 minutes



Immunohistochemistry

Image 3. The image on the left is immunohistochemistry of paraffin-embedded Human prostate cancer tissue using ABIN7192401(SLC16A3 Antibody) at dilution 1/30, on the right is treated with synthetic peptide. (Original magnification: x200)