



## Datasheet for ABIN7192403 anti-SLC16A4 antibody



[Go to Product page](#)

### 1 Image

#### Overview

Quantity:	100 µL
Target:	SLC16A4
Reactivity:	Human
Host:	Rabbit
Clonality:	Polyclonal
Conjugate:	This SLC16A4 antibody is un-conjugated
Application:	Western Blotting (WB), ELISA

#### Product Details

Immunogen:	Synthetic peptide of Human SLC16A4
Isotype:	IgG
Cross-Reactivity:	Human
Purification:	Antigen affinity purification

#### Target Details

Target:	SLC16A4
Alternative Name:	SLC16A4 ( <a href="#">SLC16A4 Products</a> )
Background:	Background: Monocarboxylate transporter 5 is a protein that in humans is encoded by the SLC16A4 gene. Proton-linked monocarboxylate transporter. Catalyzes the rapid transport across the plasma membrane of many monocarboxylates such as lactate, pyruvate, branched-chain oxo acids derived from leucine, valine and isoleucine, and the ketone bodies acetoacetate,

## Target Details

beta-hydroxybutyrate and acetate.

Aliases: SLC16A4 antibody, MCT4 antibody, MCT5 antibody, Monocarboxylate transporter 5 antibody, MCT 5 antibody, Monocarboxylate transporter 4 antibody, MCT 4 antibody, Solute carrier family 16 member 4 antibody

UniProt: [O15374](#)

## Application Details

Application Notes: ELISA:1:2000-1:10000, WB:1:1000-1:5000,

Restrictions: For Research Use only

## Handling

Format: Liquid

Buffer: -20 °C, pH 7.4 PBS, 0.05 % Sodium azide, 40 % Glycerol

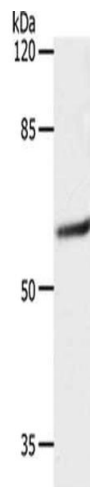
Preservative: Sodium azide

Precaution of Use: This product contains Sodium azide: a POISONOUS AND HAZARDOUS SUBSTANCE which should be handled by trained staff only.

Storage: -20 °C,-80 °C

Storage Comment: Upon receipt, store at -20°C or -80°C. Avoid repeated freeze.

## Images



### Western Blotting

**Image 1.** Gel: 10 % SDS-PAGE, Lysate: 40 µg, Lane: 231 cells, Primary antibody: ABIN7192403(SLC16A4 Antibody) at dilution 1/1200, Secondary antibody: Goat anti rabbit IgG at 1/8000 dilution, Exposure time: 10 seconds