



[Go to Product page](#)

Datasheet for ABIN7192423
anti-SLC22A12 antibody

3 Images

Overview

Quantity:	100 µL
Target:	SLC22A12
Reactivity:	Human
Host:	Rabbit
Clonality:	Polyclonal
Conjugate:	This SLC22A12 antibody is un-conjugated
Application:	Western Blotting (WB), ELISA, Immunohistochemistry (IHC)

Product Details

Immunogen:	Synthetic peptide of Human SLC22A12
Isotype:	IgG
Cross-Reactivity:	Human
Purification:	Antigen affinity purification

Target Details

Target:	SLC22A12
Alternative Name:	SLC22A12 (SLC22A12 Products)
Background:	Background: The protein encoded by this gene is a member of the organic anion transporter (OAT) family, and it acts as a urate transporter to regulate urate levels in blood. This protein is an integral membrane protein primarily found in epithelial cells of the proximal tubule of the kidney. An elevated level of serum urate, hyperuricemia, is associated with increased incidences

Target Details

of gout, and mutations in this gene cause renal hypouricemia type 1. Alternative splicing results in multiple transcript variants.

Aliases: Organic anion transporter 4-like protein antibody, Renal-specific transporter antibody, RST antibody, S22AC_HUMAN antibody, Slc22a12 antibody, Solute carrier family 22 member 12 antibody, Urate anion exchanger 1 antibody

UniProt: [Q96S37](#)

Application Details

Application Notes: ELISA:1:1000-1:2000, WB:1:200-1:1000, IHC:1:25-1:100,

Restrictions: For Research Use only

Handling

Format: Liquid

Buffer: -20 °C, pH 7.4 PBS, 0.05 % Sodium azide, 40 % Glycerol

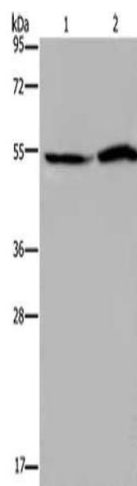
Preservative: Sodium azide

Precaution of Use: This product contains Sodium azide: a POISONOUS AND HAZARDOUS SUBSTANCE which should be handled by trained staff only.

Storage: -20 °C,-80 °C

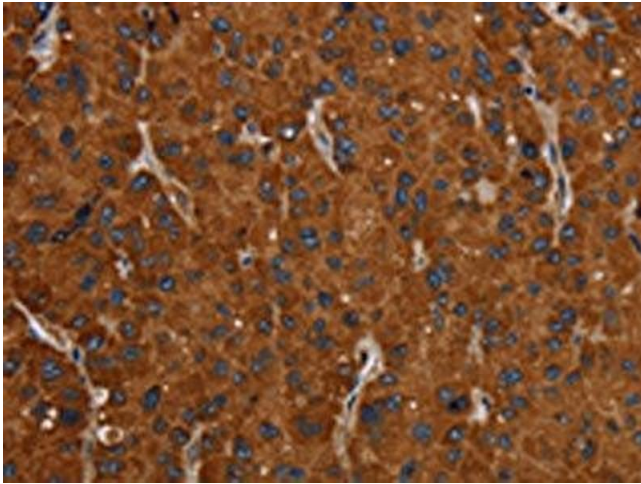
Storage Comment: Upon receipt, store at -20°C or -80°C. Avoid repeated freeze.

Images



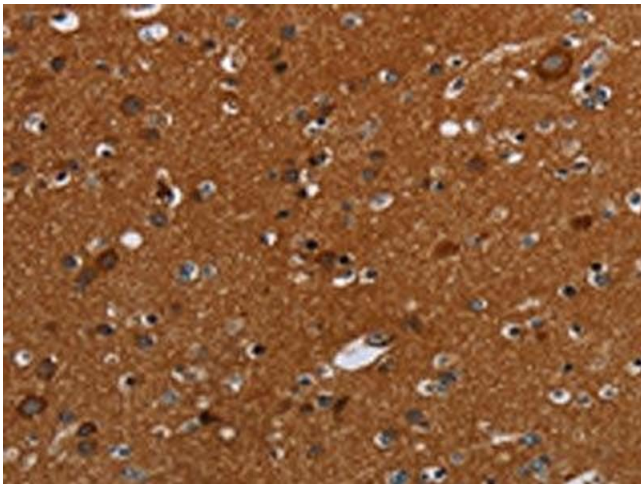
Western Blotting

Image 1. Gel: 8 % SDS-PAGE, Lysate: 40 µg, Lane 1-2: Hela cells, 293T cells, Primary antibody: ABIN7192423(SLC22A12 Antibody) at dilution 1/200, Secondary antibody: Goat anti rabbit IgG at 1/8000 dilution, Exposure time: 40 seconds



Immunohistochemistry

Image 2. The image on the left is immunohistochemistry of paraffin-embedded Human liver cancer tissue using ABIN7192423(SLC22A12 Antibody) at dilution 1/20, on the right is treated with synthetic peptide. (Original magnification: x200)



Immunohistochemistry

Image 3. The image on the left is immunohistochemistry of paraffin-embedded Human brain tissue using ABIN7192423(SLC22A12 Antibody) at dilution 1/20, on the right is treated with synthetic peptide. (Original magnification: x200)