



[Go to Product page](#)

Datasheet for ABIN7192428
anti-SLC22A3 antibody

3 Images

Overview

| | |
|--------------|--|
| Quantity: | 100 µL |
| Target: | SLC22A3 (OCT3) |
| Reactivity: | Human |
| Host: | Rabbit |
| Clonality: | Polyclonal |
| Conjugate: | This SLC22A3 antibody is un-conjugated |
| Application: | Western Blotting (WB), ELISA, Immunohistochemistry (IHC) |

Product Details

| | |
|-------------------|------------------------------------|
| Immunogen: | Synthetic peptide of Human SLC22A3 |
| Isotype: | IgG |
| Cross-Reactivity: | Human, Mouse, Rat |
| Purification: | Antigen affinity purification |

Target Details

| | |
|-------------------|---|
| Target: | SLC22A3 (OCT3) |
| Alternative Name: | SLC22A3 (OCT3 Products) |
| Background: | Background: Polyspecific organic cation transporters in the liver, kidney, intestine, and other organs are critical for elimination of many endogenous small organic cations as well as a wide array of drugs and environmental toxins. This gene is one of three similar cation transporter genes located in a cluster on chromosome 6. The encoded protein contains twelve putative |

Target Details

transmembrane domains and is a plasma integral membrane protein.

Aliases: EMT antibody, EMT organic cation transporter 3 antibody, EMTH antibody, Extraneuronal monoamine transporter antibody, OCT 3 antibody, OCT3 antibody, Orct 3 antibody, Orct3 antibody, Organic cation transporter 3 antibody, S22A3_HUMAN antibody, SLC22 A3 antibody, SLC22A 3 antibody, Slc22a3 antibody, Solute carrier family 22 (extraneuronal monoamine transporter) member 3 antibody, Solute carrier family 22 (organic cation transporter) member 3 antibody, Solute carrier family 22 member 3 antibody

UniProt: [075751](#)

Application Details

Application Notes: ELISA:1:2000-1:5000, WB:1:500-1:2000, IHC:1:25-1:100,

Restrictions: For Research Use only

Handling

Format: Liquid

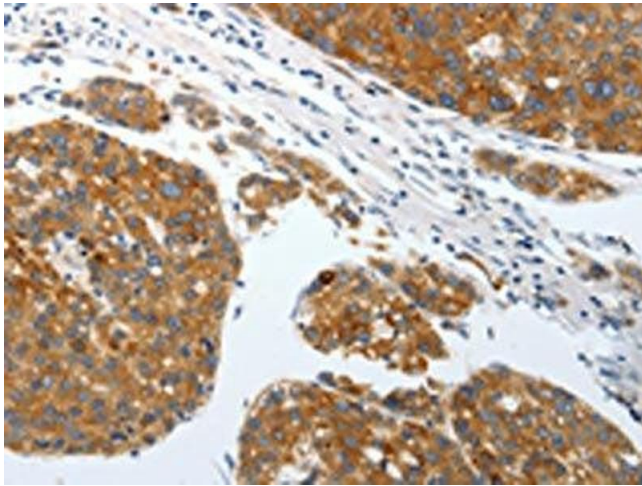
Buffer: -20 °C, pH 7.4 PBS, 0.05 % Sodium azide, 40 % Glycerol

Preservative: Sodium azide

Precaution of Use: This product contains Sodium azide: a POISONOUS AND HAZARDOUS SUBSTANCE which should be handled by trained staff only.

Storage: -20 °C,-80 °C

Storage Comment: Upon receipt, store at -20°C or -80°C. Avoid repeated freeze.



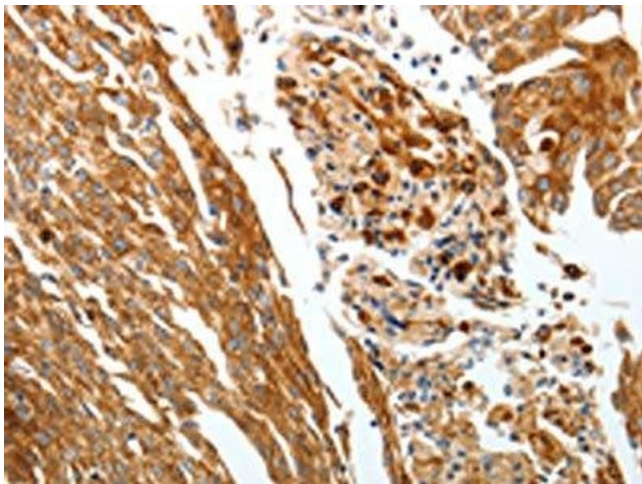
Immunohistochemistry

Image 1. The image on the left is immunohistochemistry of paraffin-embedded Human liver cancer tissue using ABIN7192428(SLC22A3 Antibody) at dilution 1/25, on the right is treated with synthetic peptide. (Original magnification: x200)



Western Blotting

Image 2. Gel: 10 % SDS-PAGE, Lysate: 40 µg, Lane: Mouse liver tissue, Primary antibody: ABIN7192428(SLC22A3 Antibody) at dilution 1/400, Secondary antibody: Goat anti rabbit IgG at 1/8000 dilution, Exposure time: 1 minute



Immunohistochemistry

Image 3. The image on the left is immunohistochemistry of paraffin-embedded Human cervical cancer tissue using ABIN7192428(SLC22A3 Antibody) at dilution 1/25, on the right is treated with synthetic peptide. (Original magnification: x200)