



Datasheet for ABIN7192437 anti-SLC24A4 antibody



[Go to Product page](#)

1 Image

Overview

Quantity:	100 µL
Target:	SLC24A4 (Slc24a4)
Reactivity:	Human
Host:	Rabbit
Clonality:	Polyclonal
Conjugate:	This SLC24A4 antibody is un-conjugated
Application:	ELISA, Immunohistochemistry (IHC)

Product Details

Immunogen:	Synthetic peptide of Human SLC24A4
Isotype:	IgG
Cross-Reactivity:	Human
Purification:	Antigen affinity purification

Target Details

Target:	SLC24A4 (Slc24a4)
Alternative Name:	SLC24A4 (Slc24a4 Products)
Background:	Background: This gene encodes a member of the potassium-dependent sodium/calcium exchanger protein family. Alternative splicing results in multiple transcript variants. Transports 1 Ca ²⁺ and 1 K ⁺ in exchange for 4 Na ⁺ . Controls the rapid response termination and proper regulation of adaptation in olfactory sensory neurons (OSNs) which subsequently influences

Target Details

how odor information is encoded and perceived.

Aliases: Na(+)/K(+)/Ca(2+)-exchange protein 4 antibody, NCKX4 antibody, NCKX4_HUMAN antibody, SHEP6 antibody, SLC24A2 antibody, SLC24A4 antibody, Sodium/potassium/calcium exchanger 4 antibody, Solute carrier family 24 (sodium/potassium/calcium exchanger) member 4 antibody, Solute carrier family 24 member 4 antibody

UniProt: [Q8NFF2](#)

Application Details

Application Notes: ELISA:1:2000-1:5000, IHC:1:25-1:100,

Restrictions: For Research Use only

Handling

Format: Liquid

Buffer: -20 °C, pH 7.4 PBS, 0.05 % Sodium azide, 40 % Glycerol

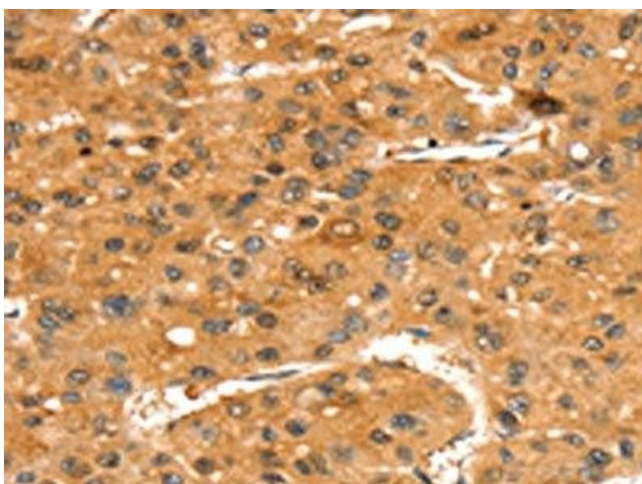
Preservative: Sodium azide

Precaution of Use: This product contains Sodium azide: a POISONOUS AND HAZARDOUS SUBSTANCE which should be handled by trained staff only.

Storage: -20 °C,-80 °C

Storage Comment: Upon receipt, store at -20°C or -80°C. Avoid repeated freeze.

Images



Immunohistochemistry

Image 1. The image on the left is immunohistochemistry of paraffin-embedded Human liver cancer tissue using ABIN7192437(SLC24A4 Antibody) at dilution 1/35, on the right is treated with synthetic peptide. (Original magnification: x200)