



Datasheet for ABIN7192440  
**anti-SLC25A2 antibody**



[Go to Product page](#)

3 Images

Overview

Quantity:	100 µL
Target:	SLC25A2
Reactivity:	Human
Host:	Rabbit
Clonality:	Polyclonal
Conjugate:	This SLC25A2 antibody is un-conjugated
Application:	Western Blotting (WB), ELISA, Immunohistochemistry (IHC)

Product Details

Immunogen:	Synthetic peptide of Human SLC25A20
Isotype:	IgG
Cross-Reactivity:	Human, Mouse, Rat
Purification:	Antigen affinity purification

Target Details

Target:	SLC25A2
Alternative Name:	SLC25A2 ( <a href="#">SLC25A2 Products</a> )
Background:	Background: This gene product is one of several closely related mitochondrial-membrane carrier proteins that shuttle substrates between cytosol and the intramitochondrial matrix space. This protein mediates the transport of acylcarnitines into mitochondrial matrix for their oxidation by the mitochondrial fatty acid-oxidation pathway.

## Target Details

Aliases: SLC25A20 antibody, CAC antibody, CACTMitochondrial carnitine/acylcarnitine carrier protein antibody, Carnitine/acylcarnitine translocase antibody, CAC antibody, Solute carrier family 25 member 20 antibody

UniProt: [O43772](#)

## Application Details

Application Notes: ELISA:1:1000-1:2000, WB:1:200-1:1000, IHC:1:25-1:100,

Restrictions: For Research Use only

## Handling

Format: Liquid

Buffer: -20 °C, pH 7.4 PBS, 0.05 % Sodium azide, 40 % Glycerol

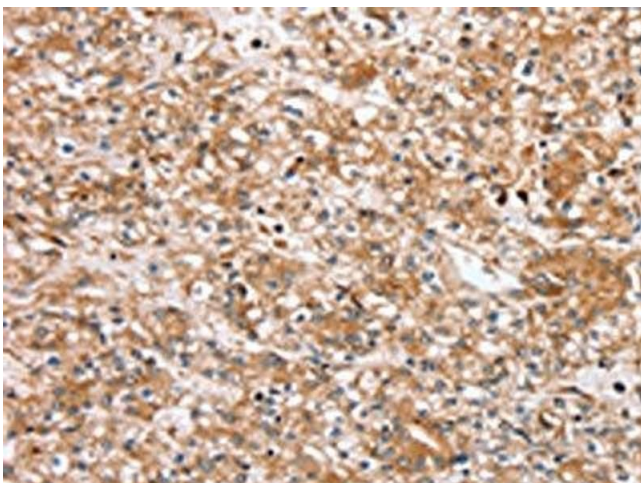
Preservative: Sodium azide

Precaution of Use: This product contains Sodium azide: a POISONOUS AND HAZARDOUS SUBSTANCE which should be handled by trained staff only.

Storage: -20 °C,-80 °C

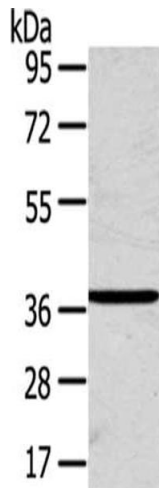
Storage Comment: Upon receipt, store at -20°C or -80°C. Avoid repeated freeze.

## Images



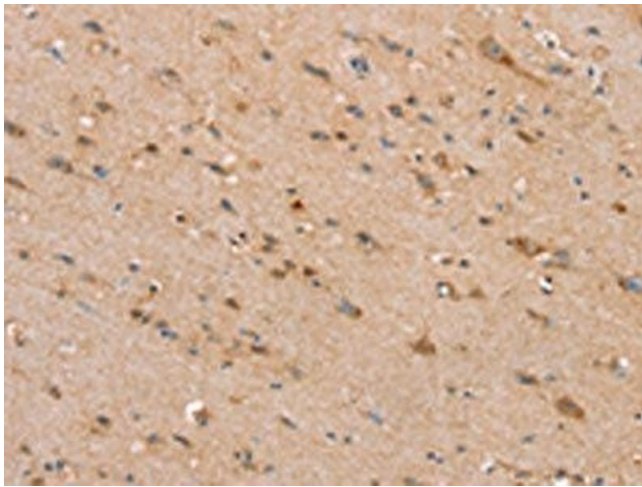
### Immunohistochemistry

**Image 1.** The image on the left is immunohistochemistry of paraffin-embedded Human prostate cancer tissue using ABIN7192440(SLC25A20 Antibody) at dilution 1/30, on the right is treated with synthetic peptide. (Original magnification: x200)



### Western Blotting

**Image 2.** Gel: 8 % SDS-PAGE, Lysate: 40 µg, Primary antibody: ABIN7192440 (SLC25A20 Antibody) at dilution 1/200 dilution, Secondary antibody: Goat anti rabbit IgG at 1/8000 dilution, Exposure time: 1 minute



### Immunohistochemistry

**Image 3.** The image on the left is immunohistochemistry of paraffin-embedded Human brain tissue using ABIN7192440 (SLC25A20 Antibody) at dilution 1/30, on the right is treated with synthetic peptide. (Original magnification: x200)