



[Go to Product page](#)

Datasheet for ABIN7192442
anti-SLC25A3 antibody

2 Images

Overview

Quantity:	100 µL
Target:	SLC25A3
Reactivity:	Human
Host:	Rabbit
Clonality:	Polyclonal
Conjugate:	This SLC25A3 antibody is un-conjugated
Application:	ELISA, Immunohistochemistry (IHC)

Product Details

Immunogen:	Synthetic peptide of Human SLC25A3
Isotype:	IgG
Cross-Reactivity:	Human, Mouse, Rat
Purification:	Antigen affinity purification

Target Details

Target:	SLC25A3
Alternative Name:	SLC25A3 (SLC25A3 Products)
Background:	Background: The protein encoded by this gene catalyzes the transport of phosphate into the mitochondrial matrix, either by proton cotransport or in exchange for hydroxyl ions. The protein contains three related segments arranged in tandem which are related to those found in other characterized members of the mitochondrial carrier family. Both the N-terminal and C-terminal

Target Details

regions of this protein protrude toward the cytosol.

Aliases: mitochondrial antibody, Mitochondrial phosphate carrier protein antibody, MPCP_HUMAN antibody, OK/SW cl.48 antibody, PHC antibody, Phosphate carrier protein antibody, Phosphate carrier protein mitochondrial antibody, Phosphate carrier protein mitochondrial precursor antibody, Phosphate transport protein antibody, PTP antibody, Slc25a3 antibody, Solute carrier family 25 member 3 antibody, Solute carrier family 25 mitochondrial carrier phosphate carrier member 3 antibody

UniProt: [Q00325](#)

Application Details

Application Notes: ELISA:1:1000-1:2000, IHC:1:25-1:100,

Restrictions: For Research Use only

Handling

Format: Liquid

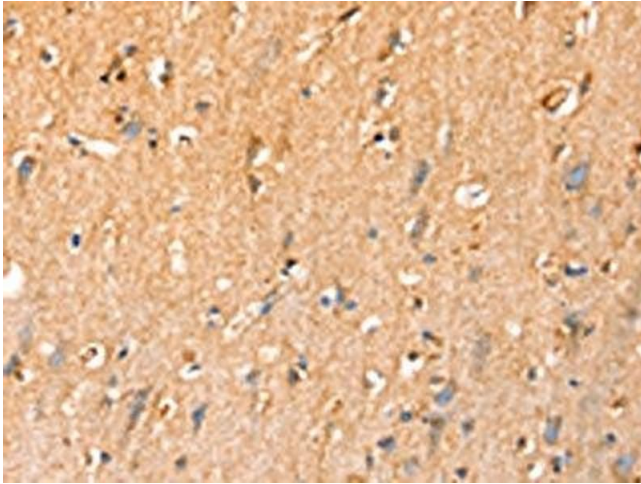
Buffer: -20 °C, pH 7.4 PBS, 0.05 % Sodium azide, 40 % Glycerol

Preservative: Sodium azide

Precaution of Use: This product contains Sodium azide: a POISONOUS AND HAZARDOUS SUBSTANCE which should be handled by trained staff only.

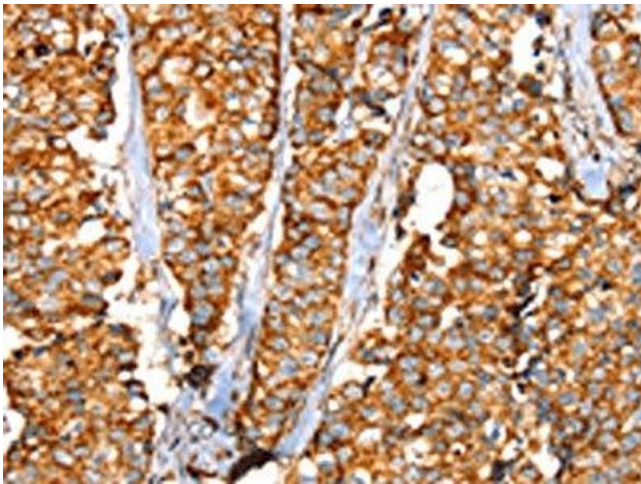
Storage: -20 °C,-80 °C

Storage Comment: Upon receipt, store at -20°C or -80°C. Avoid repeated freeze.



Immunohistochemistry

Image 1. The image on the left is immunohistochemistry of paraffin-embedded Human brain tissue using ABIN7192442(SLC25A3 Antibody) at dilution 1/35, on the right is treated with synthetic peptide. (Original magnification: x200)



Immunohistochemistry

Image 2. The image on the left is immunohistochemistry of paraffin-embedded Human breast cancer tissue using ABIN7192442(SLC25A3 Antibody) at dilution 1/35, on the right is treated with synthetic peptide. (Original magnification: x200)