

Datasheet for ABIN7192449

anti-SLC26A5 antibody**1** Image[Go to Product page](#)

Overview

Quantity:	100 µL
Target:	SLC26A5
Reactivity:	Human
Host:	Rabbit
Clonality:	Polyclonal
Conjugate:	This SLC26A5 antibody is un-conjugated
Application:	ELISA, Immunohistochemistry (IHC)

Product Details

Immunogen:	Synthetic peptide of Human SLC26A5
Isotype:	IgG
Cross-Reactivity:	Human, Mouse, Rat
Purification:	Antigen affinity purification

Target Details

Target:	SLC26A5
Alternative Name:	SLC26A5 (SLC26A5 Products)
Background:	Background: This gene encodes a member of the SLC26A/SuLP transporter family. The protein functions as a molecular motor in motile outer hair cells (OHCs) of the cochlea, inducing changes in cell length that act to amplify sound levels. The transmembrane protein is an incomplete anion transporter, and does not allow anions to cross the cell membrane but

Target Details

instead undergoes a conformational change in response to changes in intracellular Cl⁻ levels that results in a change in cell length.

Aliases: SLC26A5 antibody, PRESPrestin antibody, Solute carrier family 26 member 5 antibody

UniProt: [P58743](#)

Pathways: [Sensory Perception of Sound](#), [Dicarboxylic Acid Transport](#)

Application Details

Application Notes: ELISA:1:1000-1:2000, IHC:1:25-1:100,

Restrictions: For Research Use only

Handling

Format: Liquid

Buffer: -20 °C, pH 7.4 PBS, 0.05 % Sodium azide, 40 % Glycerol

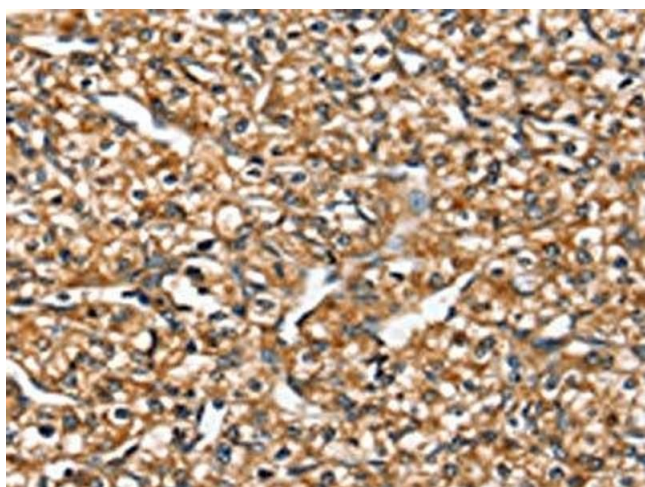
Preservative: Sodium azide

Precaution of Use: This product contains Sodium azide: a POISONOUS AND HAZARDOUS SUBSTANCE which should be handled by trained staff only.

Storage: -20 °C, -80 °C

Storage Comment: Upon receipt, store at -20°C or -80°C. Avoid repeated freeze.

Images



Immunohistochemistry

Image 1. The image on the left is immunohistochemistry of paraffin-embedded Human prostate cancer tissue using ABIN7192449(SLC26A5 Antibody) at dilution 1/20, on the right is treated with synthetic peptide. (Original magnification: x200)