

Datasheet for ABIN7192466

anti-SLC2A5 antibody**2** Images[Go to Product page](#)

Overview

Quantity:	100 µL
Target:	SLC2A5
Reactivity:	Human
Host:	Rabbit
Clonality:	Polyclonal
Conjugate:	This SLC2A5 antibody is un-conjugated
Application:	Immunohistochemistry (IHC), ELISA

Product Details

Immunogen:	Synthetic peptide of Human SLC2A5
Isotype:	IgG
Cross-Reactivity:	Human
Purification:	Antigen affinity purification

Target Details

Target:	SLC2A5
Alternative Name:	SLC2A5 (SLC2A5 Products)
Background:	Background: GLUT5 is a fructose transporter expressed on the apical border of enterocytes in the small intestine. GLUT5 allows for fructose to be transported from the intestinal lumen into the enterocyte by facilitated diffusion due to fructose's high concentration in the intestinal lumen. GLUT5 is also expressed in skeletal muscle, testis, kidney, fat tissue, and brain. Fructose

Target Details

malabsorption or Dietary Fructose Intolerance is a dietary disability of the small intestine, where the amount of fructose carrier in enterocytes is deficient. In humans the GLUT5 protein is encoded by the SLC2A5 gene.

Aliases: Facilitated glucose transporter member 5 antibody, Fructose transporter antibody, Glucose transport, kidney antibody, Glucose Transporter 5 GLUT5 antibody, glucose transporter like protein 5 antibody, Glucose transporter type 5 antibody, Glucose transporter type 5 small intestine antibody, GLUT 5 antibody, GLUT-5 antibody, GLUT5 antibody, GTR5_HUMAN antibody, SLC 2A5 antibody, SLC2A5 antibody, small intestine antibody, solute carrier family 2 (facilitated glucose/fructose transporter), member 5 antibody, Solute carrier family 2 antibody

UniProt: [P22732](#)

Application Details

Application Notes: ELISA:1:1000-1:2000, IHC:1:15-1:50,

Restrictions: For Research Use only

Handling

Format: Liquid

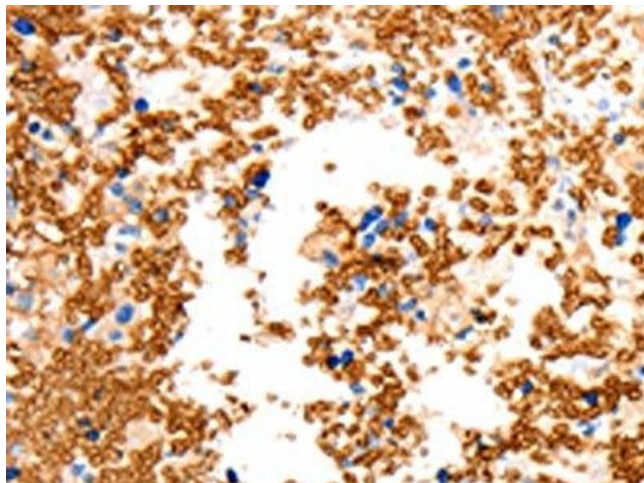
Buffer: -20 °C, pH 7.4 PBS, 0.05 % Sodium azide, 40 % Glycerol

Preservative: Sodium azide

Precaution of Use: This product contains Sodium azide: a POISONOUS AND HAZARDOUS SUBSTANCE which should be handled by trained staff only.

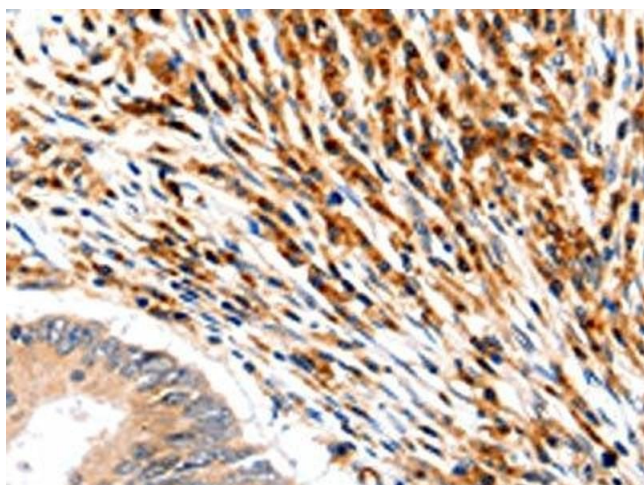
Storage: -20 °C, -80 °C

Storage Comment: Upon receipt, store at -20°C or -80°C. Avoid repeated freeze.



Immunohistochemistry

Image 1. The image on the left is immunohistochemistry of paraffin-embedded Human ovarian cancer tissue using ABIN7192466(SLC2A5 Antibody) at dilution 1/12, on the right is treated with synthetic peptide. (Original magnification: x200)



Immunohistochemistry

Image 2. The image on the left is immunohistochemistry of paraffin-embedded Human colon cancer tissue using ABIN7192466(SLC2A5 Antibody) at dilution 1/12, on the right is treated with synthetic peptide. (Original magnification: x200)