

Datasheet for ABIN7192485
anti-Band 3/AE1 antibody[Go to Product page](#)

1 Image

Overview

| | |
|--------------|---|
| Quantity: | 100 µL |
| Target: | Band 3/AE1 (SLC4A1) |
| Reactivity: | Human |
| Host: | Rabbit |
| Clonality: | Polyclonal |
| Conjugate: | This Band 3/AE1 antibody is un-conjugated |
| Application: | ELISA, Immunohistochemistry (IHC) |

Product Details

| | |
|-------------------|-----------------------------------|
| Immunogen: | Synthetic peptide of Human SLC4A1 |
| Isotype: | IgG |
| Cross-Reactivity: | Human |
| Purification: | Antigen affinity purification |

Target Details

| | |
|-------------------|--|
| Target: | Band 3/AE1 (SLC4A1) |
| Alternative Name: | SLC4A1 (SLC4A1 Products) |
| Background: | <p>Background: The protein encoded by this gene is a cell membrane protein that may be involved in iron export from duodenal epithelial cells. Defects in this gene are a cause of hemochromatosis type 4 (HFE4).</p> <p>Aliases: Ferroportin 1 antibody, Ferroportin antibody, Ferroportin-1 antibody, FPN1 antibody,</p> |

Target Details

HFE4 antibody, IREG1 antibody, iron regulated gene 1 antibody, Iron regulated transporter 1 antibody, Iron-regulated transporter 1 antibody, MST079 antibody, MSTP079 antibody, MTP1 antibody, putative ferroportin 1 variant IIIA antibody, putative ferroportin 1 variant IIIB antibody, S40A1_HUMAN antibody, SLC11A3 antibody, SLC11A3, formerly antibody, SLC40A1 antibody, solute carrier family 11 (proton-coupled divalent metal ion transporters), member 3 antibody, solute carrier family 11 (proton-coupled divalent metal ion transporters), member 3, formerly antibody, solute carrier family 40 (iron-regulated transporter), member 1 antibody, Solute carrier family 40 member 1 antibody

UniProt: [Q9NP59](#)

Application Details

Application Notes: ELISA:1:1000-1:2000, IHC:1:25-1:100,

Restrictions: For Research Use only

Handling

Format: Liquid

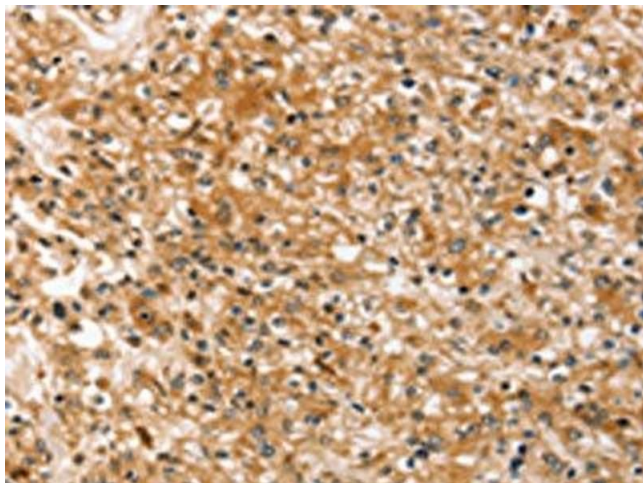
Buffer: -20 °C, pH 7.4 PBS, 0.05 % Sodium azide, 40 % Glycerol

Preservative: Sodium azide

Precaution of Use: This product contains Sodium azide: a POISONOUS AND HAZARDOUS SUBSTANCE which should be handled by trained staff only.

Storage: -20 °C, -80 °C

Storage Comment: Upon receipt, store at -20°C or -80°C. Avoid repeated freeze.



Immunohistochemistry

Image 1. The image on the left is immunohistochemistry of paraffin-embedded Human prostate cancer tissue using ABIN7192485(SLC40A1 Antibody) at dilution 1/20, on the right is treated with synthetic peptide. (Original magnification: x200)