

Datasheet for ABIN7192491

anti-SLC43A2 antibody[Go to Product page](#)**2** Images

Overview

Quantity:	100 µL
Target:	SLC43A2
Reactivity:	Human
Host:	Rabbit
Clonality:	Polyclonal
Application:	Western Blotting (WB), ELISA, Immunohistochemistry (IHC)

Product Details

Immunogen:	Synthetic peptide of Human SLC43A2
Isotype:	IgG
Cross-Reactivity:	Human, Mouse
Purification:	Antigen affinity purification

Target Details

Target:	SLC43A2
Alternative Name:	SLC43A2 (SLC43A2 Products)
Background:	Background: SLC43A2 (solute carrier family 43, member 2), also known as LAT4 or PP7664, is a 569 amino acid multi-pass membrane protein that belongs to the SLC43A solute transporter family. Expressed in a variety of tissues with highest expression in kidney and placenta, SLC43A2 functions as a sodium- and chloride-independent transport channel protein that facilitates the transport of large neutral amino acids across membranes. Overexpression of

Target Details

SLC43A2 is associated with head and neck carcinomas, implicating SLC43A2 as a tumor-associated protein.

Aliases: FLJ23848 antibody, L-type amino acid transporter 4 antibody, Large neutral amino acids transporter small subunit 4 antibody, LAT4 antibody, LAT4_HUMAN antibody, MGC34680 antibody, SLC43A2 antibody, Solute carrier family 43 (amino acid system L transporter) member 2 antibody, Solute carrier family 43 member 2 antibody

UniProt: [Q8N370](#)

Application Details

Application Notes: ELISA:1:1000-1:2000, WB:1:200-1:1000, IHC:1:25-1:100,

Restrictions: For Research Use only

Handling

Format: Liquid

Buffer: -20 °C, pH 7.4 PBS, 0.05 % Sodium azide, 40 % Glycerol

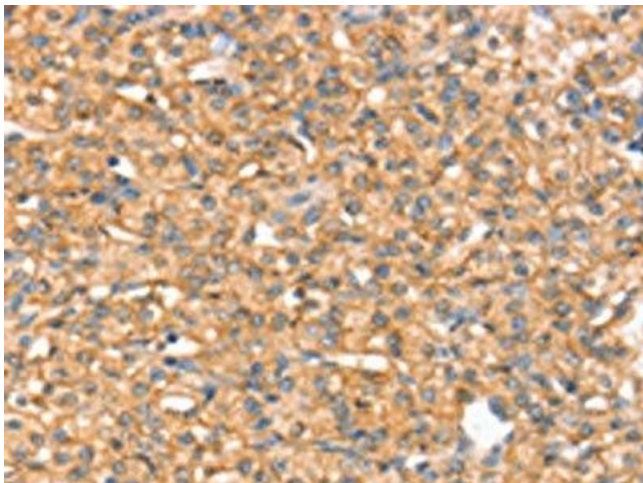
Preservative: Sodium azide

Precaution of Use: This product contains Sodium azide: a POISONOUS AND HAZARDOUS SUBSTANCE which should be handled by trained staff only.

Storage: -20 °C,-80 °C

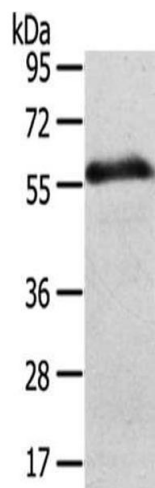
Storage Comment: Upon receipt, store at -20°C or -80°C. Avoid repeated freeze.

Images



Immunohistochemistry

Image 1. The image on the left is immunohistochemistry of paraffin-embedded Human prostate cancer tissue using ABIN7192491(SLC43A2 Antibody) at dilution 1/20, on the right is treated with synthetic peptide. (Original magnification: x200)



Western Blotting

Image 2. Gel: 8 % SDS-PAGE,Lysate: 40 µg,Lane: Human normal stomach tissue,Primary antibody: ABIN7192491(SLC43A2 Antibody) at dilution 1/200 dilution,Secondary antibody: Goat anti rabbit IgG at 1/8000 dilution,Exposure time: 5 minute