

Datasheet for ABIN7192492

anti-SLC44A1 antibody**2** Images[Go to Product page](#)

Overview

Quantity:	100 µL
Target:	SLC44A1
Reactivity:	Human
Host:	Rabbit
Clonality:	Polyclonal
Conjugate:	This SLC44A1 antibody is un-conjugated
Application:	ELISA, Immunohistochemistry (IHC)

Product Details

Immunogen:	Synthetic peptide of Human SLC44A1
Isotype:	IgG
Cross-Reactivity:	Human, Mouse, Rat
Purification:	Antigen affinity purification

Target Details

Target:	SLC44A1
Alternative Name:	SLC44A1 (SLC44A1 Products)
Background:	Background: This gene is Choline transporter. It belongs to the CTL (choline transporter-like) family. May be involved in membrane synthesis and myelin production. It is taken up with high affinity at cholinergic nerve terminals in a sodium-dependent manner. Cloned CTL1, a suppressor for a yeast choline transport mutation, from a Torpedo electric lobe yeast

Target Details

expression library by functional complementation.

Aliases: CD 92 antibody, CD92 antibody, CD92 antigen antibody, CD92 protein antibody, CDW 92 antibody, CDw92 antibody, CDW92 antigen antibody, Choline transporter like protein 1 antibody, Choline transporter-like protein 1 antibody, CHTL 1 antibody, CHTL1 antibody, CTL 1 antibody, CTL1 antibody, CTL1_HUMAN antibody, RP11 287A8.1 antibody, slc44a1 antibody, Solute carrier family 44 member 1 antibody

UniProt: [Q8WWI5](#)

Application Details

Application Notes: ELISA:1:1000-1:5000, IHC:1:25-1:100,

Restrictions: For Research Use only

Handling

Format: Liquid

Buffer: -20 °C, pH 7.4 PBS, 0.05 % Sodium azide, 40 % Glycerol

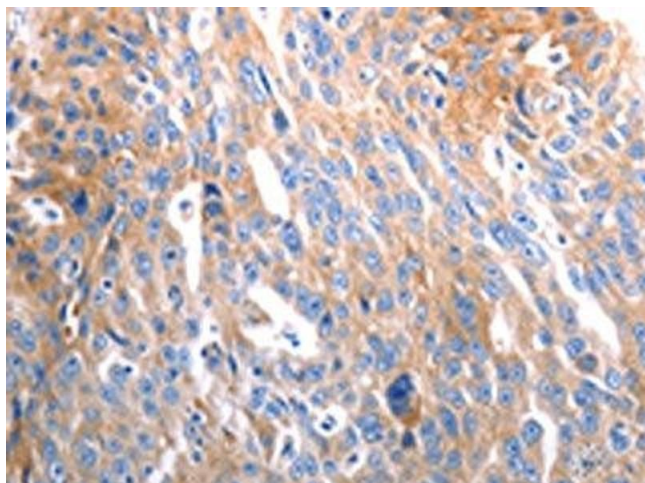
Preservative: Sodium azide

Precaution of Use: This product contains Sodium azide: a POISONOUS AND HAZARDOUS SUBSTANCE which should be handled by trained staff only.

Storage: -20 °C, -80 °C

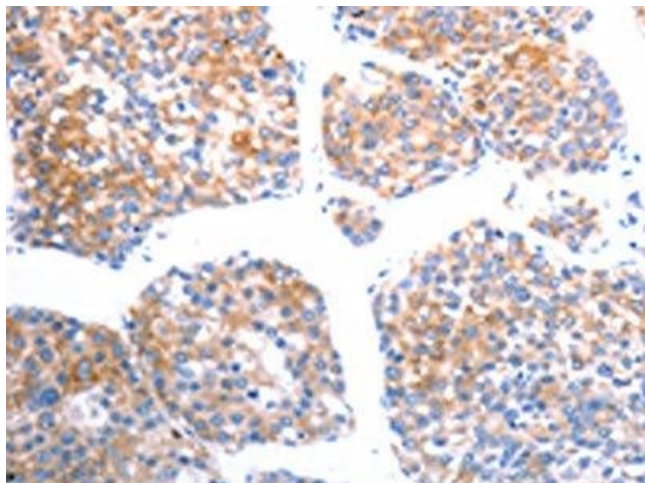
Storage Comment: Upon receipt, store at -20°C or -80°C. Avoid repeated freeze.

Images



Immunohistochemistry

Image 1. The image on the left is immunohistochemistry of paraffin-embedded Human ovarian cancer tissue using ABIN7192492(SLC44A1 Antibody) at dilution 1/25, on the right is treated with synthetic peptide. (Original magnification: x200)



Immunohistochemistry

Image 2. The image on the left is immunohistochemistry of paraffin-embedded Human liver cancer tissue using ABIN7192492(SLC44A1 Antibody) at dilution 1/25, on the right is treated with synthetic peptide. (Original magnification: x200)