

Datasheet for ABIN7192494

anti-SLC44A2 antibody[Go to Product page](#)**1** Image

Overview

Quantity:	100 µL
Target:	SLC44A2
Reactivity:	Human
Host:	Rabbit
Clonality:	Polyclonal
Conjugate:	This SLC44A2 antibody is un-conjugated
Application:	Immunohistochemistry (IHC), ELISA

Product Details

Immunogen:	Synthetic peptide of Human SLC44A2
Isotype:	IgG
Cross-Reactivity:	Human
Purification:	Antigen affinity purification

Target Details

Target:	SLC44A2
Alternative Name:	SLC44A2 (SLC44A2 Products)
Background:	Background: CTL2, also called SLC44A2 (solute carrier family 44 member 2), is a multi-pass membrane protein expressed in cells of the inner ear. CTL2 is a possible candidate for autoimmune hearing loss in humans. Present in supporting cells of the inner ear (at protein level). Only isoform 3 is expressed in inner ear vestibular tissue.

Target Details

Aliases: Choline transporter like protein 2 antibody, Choline transporter-like protein 2 antibody, CTL 2 antibody, CTL2 antibody, CTL2_HUMAN antibody, DKFZp666A071 antibody, FLJ44586 antibody, PP1292 antibody, SLC44A2 antibody, Solute carrier family 44 (choline transporter) member 2 antibody, Solute carrier family 44 member 2 antibody, Testicular tissue protein Li 47 antibody

UniProt: [Q8IWA5](#)

Pathways: [SARS-CoV-2 Protein Interactome](#)

Application Details

Application Notes: ELISA:1:1000-1:2000, IHC:1:25-1:100,

Restrictions: For Research Use only

Handling

Format: Liquid

Buffer: -20 °C, pH 7.4 PBS, 0.05 % Sodium azide, 40 % Glycerol

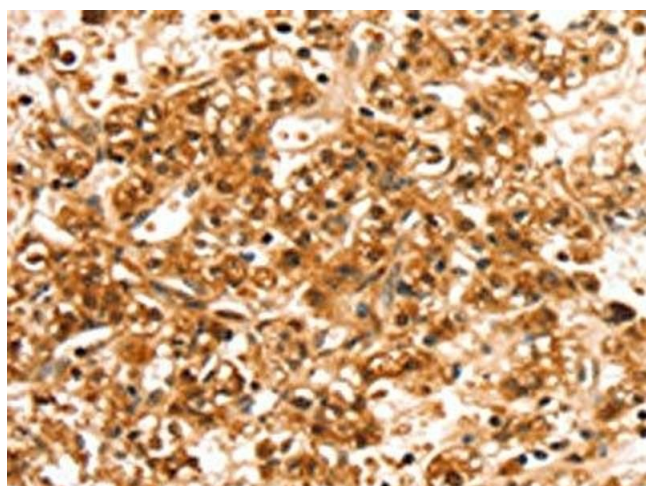
Preservative: Sodium azide

Precaution of Use: This product contains Sodium azide: a POISONOUS AND HAZARDOUS SUBSTANCE which should be handled by trained staff only.

Storage: -20 °C, -80 °C

Storage Comment: Upon receipt, store at -20°C or -80°C. Avoid repeated freeze.

Images



Immunohistochemistry

Image 1. The image on the left is immunohistochemistry of paraffin-embedded Human prostate cancer tissue using ABIN7192494(SLC44A2 Antibody) at dilution 1/20, on the right is treated with synthetic peptide. (Original magnification: x200)