

Datasheet for ABIN7192520

anti-SLC6A8 antibody

2 Images

[Go to Product page](#)

Overview

Quantity:	100 µL
Target:	SLC6A8
Reactivity:	Human
Host:	Rabbit
Clonality:	Polyclonal
Conjugate:	This SLC6A8 antibody is un-conjugated
Application:	ELISA, Immunohistochemistry (IHC)

Product Details

Immunogen:	Synthetic peptide of Human SLC6A8
Isotype:	IgG
Cross-Reactivity:	Human, Mouse, Rat
Purification:	Antigen affinity purification

Target Details

Target:	SLC6A8
Alternative Name:	SLC6A8 (SLC6A8 Products)
Background:	Background: The protein encoded by this gene is a plasma membrane protein whose function is to transport creatine into and out of cells. Defects in this gene can result in X-linked creatine deficiency syndrome. Multiple transcript variants encoding different isoforms have been found for this gene.

Target Details

Aliases: SLC6A 8 antibody, SLC6A8 antibody, Creatine transporter 1 antibody, Creatine transporter SLC6A8 antibody, CRT antibody, CRTR antibody, CT 1 antibody, CT1 antibody, MGC87396 antibody, SC6A8_HUMAN antibody, Slc6a8 antibody, Sodium and chloride-dependent creatine transporter 1 antibody, Sodium- and chloride-dependent creatine transporter 1 antibody, Solute carrier family 6 (neurotransmitter transporter, creatine), member 8. antibody, Solute carrier family 6 member 8 antibody

UniProt: [P48029](#)

Pathways: [Retinoic Acid Receptor Signaling Pathway](#), [Intracellular Steroid Hormone Receptor Signaling Pathway](#), [Regulation of Intracellular Steroid Hormone Receptor Signaling](#), [Nuclear Hormone Receptor Binding](#), [ER-Nucleus Signaling](#), [Unfolded Protein Response](#)

Application Details

Application Notes: ELISA:1:1000-1:2000, IHC:1:25-1:100,

Restrictions: For Research Use only

Handling

Format: Liquid

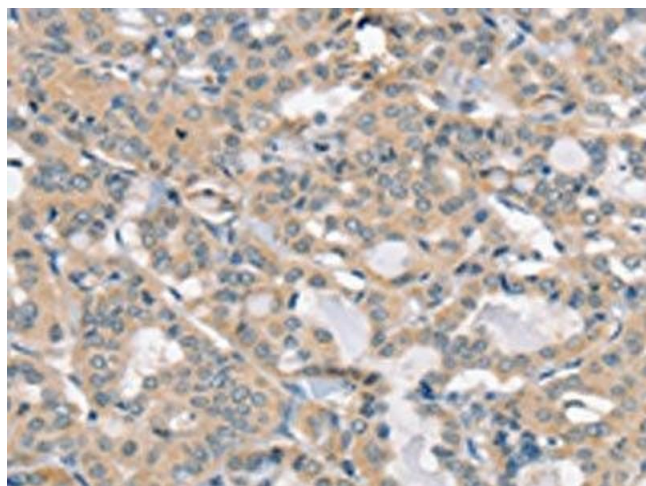
Buffer: -20 °C, pH 7.4 PBS, 0.05 % Sodium azide, 40 % Glycerol

Preservative: Sodium azide

Precaution of Use: This product contains Sodium azide: a POISONOUS AND HAZARDOUS SUBSTANCE which should be handled by trained staff only.

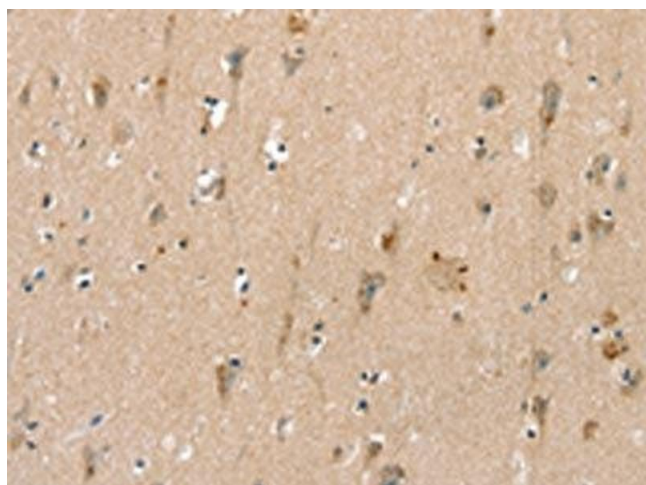
Storage: -20 °C,-80 °C

Storage Comment: Upon receipt, store at -20°C or -80°C. Avoid repeated freeze.



Immunohistochemistry

Image 1. The image on the left is immunohistochemistry of paraffin-embedded Human thyroid cancer tissue using ABIN7192520(SLC6A8 Antibody) at dilution 1/30, on the right is treated with synthetic peptide. (Original magnification: x200)



Immunohistochemistry

Image 2. The image on the left is immunohistochemistry of paraffin-embedded Human brain tissue using ABIN7192520(SLC6A8 Antibody) at dilution 1/30, on the right is treated with synthetic peptide. (Original magnification: x200)