



Datasheet for ABIN7192521 anti-SLC7A11 antibody



[Go to Product page](#)

3 Images

Overview

Quantity:	100 µL
Target:	SLC7A11
Reactivity:	Human
Host:	Rabbit
Clonality:	Polyclonal
Conjugate:	This SLC7A11 antibody is un-conjugated
Application:	Western Blotting (WB), ELISA, Immunohistochemistry (IHC)

Product Details

Immunogen:	Synthetic peptide of Human SLC7A11
Isotype:	IgG
Cross-Reactivity:	Human, Mouse
Purification:	Antigen affinity purification

Target Details

Target:	SLC7A11
Alternative Name:	SLC7A11 (SLC7A11 Products)
Background:	Background: This gene encodes a member of a heteromeric, sodium-independent, anionic amino acid transport system that is highly specific for cysteine and glutamate. In this system, designated Xc(-), the anionic form of cysteine is transported in exchange for glutamate. This protein has been identified as the predominant mediator of Kaposi sarcoma-associated

Target Details

herpesvirus fusion and entry permissiveness into cells. Also, increased expression of this gene in primary gliomas (compared to normal brain tissue) was associated with increased glutamate secretion via the XCT channels, resulting in neuronal cell death.

Aliases: Amino acid transport system xc xCT antibody antibody, Amino acid transport system xc- antibody, Calcium channel blocker resistance protein CCBR1 antibody, Calcium channel blocker resistance protein CCBR1 antibody antibody, CCBR1 antibody, Cysteine/glutamate transporter antibody antibody, Cystine/glutamate transporter antibody, OTTHUMP00000164578 antibody, SLC7A11 antibody, Solute carrier family 7 (anionic amino acid transporter light chain, xc- system), member 11 antibody, solute carrier family 7 antibody, Solute carrier family 7 member 11 antibody, Solute carrier family 7, (cationic amino acid transporter, y+ system) member 11 antibody, SYSTEM Xc(-) TRANSPORTER-RELATED PROTEIN antibody, xCT antibody, XCT_HUMAN antibody

UniProt: [Q9UPY5](#)

Application Details

Application Notes: ELISA:1:2000-1:5000, WB:1:500-1:2000, IHC:1:20-1:100,

Restrictions: For Research Use only

Handling

Format: Liquid

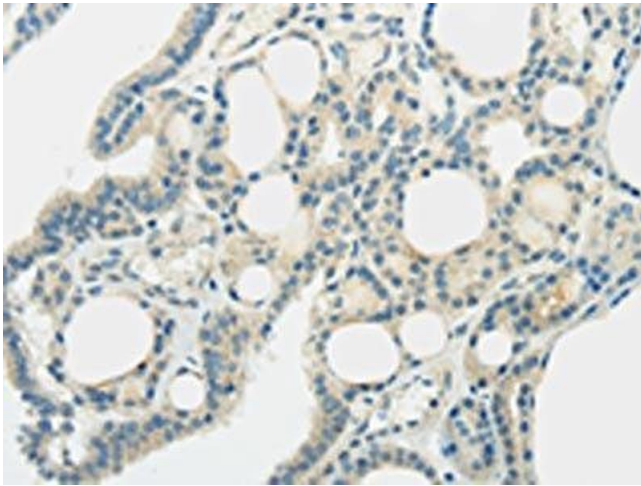
Buffer: -20 °C, pH 7.4 PBS, 0.05 % Sodium azide, 40 % Glycerol

Preservative: Sodium azide

Precaution of Use: This product contains Sodium azide: a POISONOUS AND HAZARDOUS SUBSTANCE which should be handled by trained staff only.

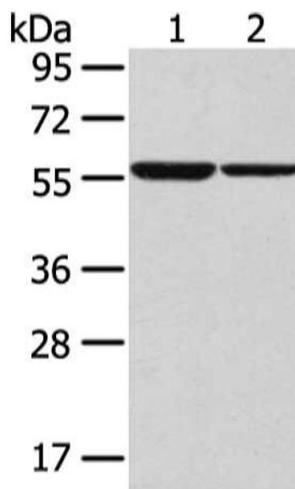
Storage: -20 °C,-80 °C

Storage Comment: Upon receipt, store at -20°C or -80°C. Avoid repeated freeze.



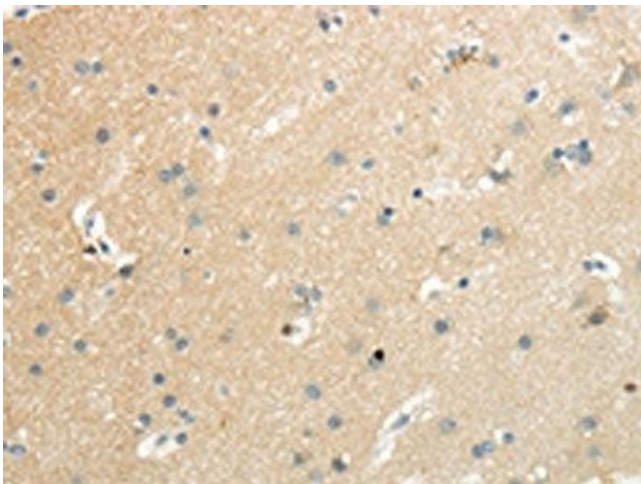
Immunohistochemistry

Image 1. The image on the left is immunohistochemistry of paraffin-embedded Human thyroid cancer tissue using ABIN7192521(SLC7A11 Antibody) at dilution 1/35, on the right is treated with synthetic peptide. (Original magnification: x200)



Western Blotting

Image 2. Gel: 8 % SDS-PAGE, Lysate: 40 µg, Lane 1-2: K562 and hepg2 cell, Primary antibody: ABIN7192521(SLC7A11 Antibody) at dilution 1/300 dilution, Secondary antibody: Goat anti rabbit IgG at 1/8000 dilution, Exposure time: 30 seconds



Immunohistochemistry

Image 3. The image on the left is immunohistochemistry of paraffin-embedded Human brain tissue using ABIN7192521(SLC7A11 Antibody) at dilution 1/35, on the right is treated with synthetic peptide. (Original magnification: x200)