



Datasheet for ABIN7192602 **anti-SOX1 antibody**



[Go to Product page](#)

1 Image

Overview

Quantity:	100 µL
Target:	SOX1
Reactivity:	Human
Host:	Rabbit
Clonality:	Polyclonal
Conjugate:	This SOX1 antibody is un-conjugated
Application:	Western Blotting (WB), ELISA

Product Details

Immunogen:	Synthetic peptide of Human SOX1
Isotype:	IgG
Cross-Reactivity:	Human, Mouse
Purification:	Antigen affinity purification

Target Details

Target:	SOX1
Alternative Name:	SOX1 (SOX1 Products)
Background:	Background: This intronless gene encodes a member of the SOX (SRY-related HMG-box) family of transcription factors involved in the regulation of embryonic development and in the determination of the cell fate. The encoded protein may act as a transcriptional activator after forming a protein complex with other proteins. In mice, a similar protein regulates the gamma-

Target Details

crystallin genes and is essential for lens development.

Aliases: Sex determining region Y box 1 antibody, sox1 antibody, SOX1_HUMAN antibody, SRY antibody, SRY box containing gene 1 antibody, SRY related HMG box gene 1 antibody, Transcription factor Sox-1 antibody

UniProt: [O00570](#)

Application Details

Application Notes: ELISA:1:1000-1:5000, WB:1:200-1:1000,

Restrictions: For Research Use only

Handling

Format: Liquid

Buffer: -20 °C, pH 7.4 PBS, 0.05 % Sodium azide, 40 % Glycerol

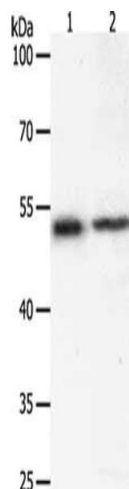
Preservative: Sodium azide

Precaution of Use: This product contains Sodium azide: a POISONOUS AND HAZARDOUS SUBSTANCE which should be handled by trained staff only.

Storage: -20 °C,-80 °C

Storage Comment: Upon receipt, store at -20°C or -80°C. Avoid repeated freeze.

Images



Western Blotting

Image 1. Gel: 10 % SDS-PAGE, Lysate: 40 µg, Lane 1-2: Human liver cancer tissue, 293T cells, Primary antibody: ABIN7192602(SOX1 Antibody) at dilution 1/400, Secondary antibody: Goat anti rabbit IgG at 1/8000 dilution, Exposure time: 20 seconds