

Datasheet for ABIN7192612

anti-SPAG1 antibody**2** Images[Go to Product page](#)

Overview

Quantity:	100 µL
Target:	SPAG1
Reactivity:	Human
Host:	Rabbit
Clonality:	Polyclonal
Conjugate:	This SPAG1 antibody is un-conjugated
Application:	ELISA, Immunohistochemistry (IHC)

Product Details

Immunogen:	Synthetic peptide of Human SPAG1
Isotype:	IgG
Cross-Reactivity:	Human
Purification:	Antigen affinity purification

Target Details

Target:	SPAG1
Alternative Name:	SPAG1 (SPAG1 Products)
Background:	Background: The correlation of anti-sperm antibodies with cases of unexplained infertility implicates a role for these antibodies in blocking fertilization. Improved diagnosis and treatment of immunologic infertility, as well as identification of proteins for targeted contraception, are dependent on the identification and characterization of relevant sperm

Target Details

antigens. The protein expressed by this gene is recognized by anti-sperm agglutinating antibodies from an infertile woman. Furthermore, immunization of female rats with the recombinant human protein reduced fertility. This protein localizes to the plasma membrane of germ cells in the testis and to the post-acrosomal plasma membrane of mature spermatozoa. Recombinant polypeptide binds GTP and exhibits GTPase activity. Thus, this protein may regulate GTP signal transduction pathways involved in spermatogenesis and fertilization. Two transcript variants of this gene encode the same protein.

Aliases: SPAG1 antibody, Sperm-associated antigen 1 antibody, HSD-3.8 antibody, Infertility-related sperm protein Spag-1 antibody

UniProt: [Q07617](#)

Application Details

Application Notes: ELISA:1:1000-1:5000, IHC:1:25-1:100,

Restrictions: For Research Use only

Handling

Format: Liquid

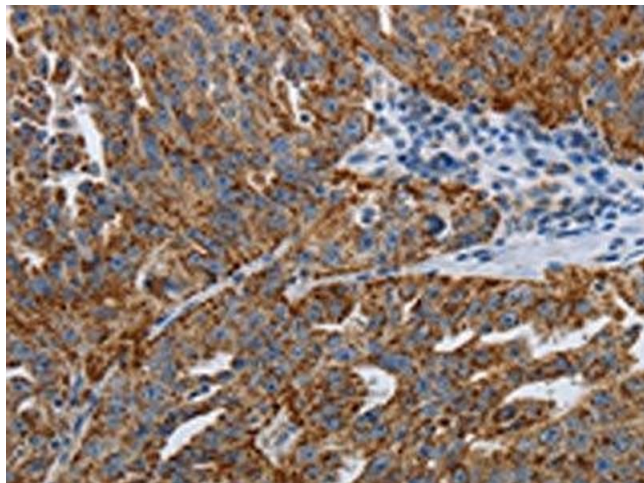
Buffer: -20 °C, pH 7.4 PBS, 0.05 % Sodium azide, 40 % Glycerol

Preservative: Sodium azide

Precaution of Use: This product contains Sodium azide: a POISONOUS AND HAZARDOUS SUBSTANCE which should be handled by trained staff only.

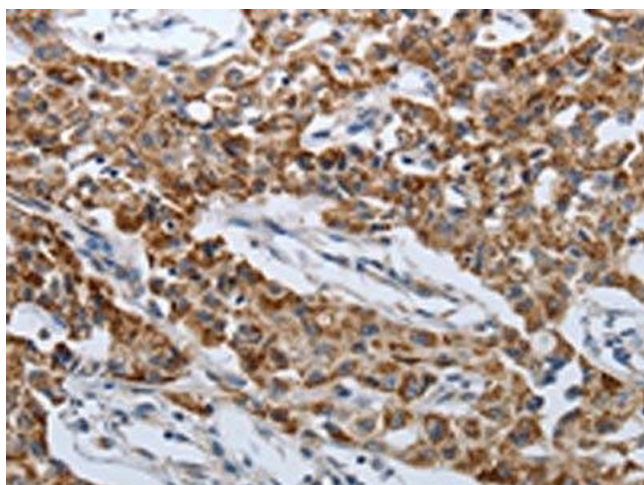
Storage: -20 °C, -80 °C

Storage Comment: Upon receipt, store at -20°C or -80°C. Avoid repeated freeze.



Immunohistochemistry

Image 1. The image on the left is immunohistochemistry of paraffin-embedded Human ovarian cancer tissue using ABIN7192612(SPAG1 Antibody) at dilution 1/25, on the right is treated with synthetic peptide. (Original magnification: x200)



Immunohistochemistry

Image 2. The image on the left is immunohistochemistry of paraffin-embedded Human lung cancer tissue using ABIN7192612(SPAG1 Antibody) at dilution 1/25, on the right is treated with synthetic peptide. (Original magnification: x200)