

Datasheet for ABIN7192614

anti-SPAG4 antibody

3 Images

[Go to Product page](#)

Overview

Quantity:	100 µL
Target:	SPAG4
Reactivity:	Human
Host:	Rabbit
Clonality:	Polyclonal
Conjugate:	This SPAG4 antibody is un-conjugated
Application:	ELISA, Western Blotting (WB), Immunohistochemistry (IHC)

Product Details

Immunogen:	Synthetic peptide of Human SPAG4
Isotype:	IgG
Cross-Reactivity:	Human
Purification:	Antigen affinity purification

Target Details

Target:	SPAG4
Alternative Name:	SPAG4 (SPAG4 Products)
Background:	Background: The mammalian sperm flagellum contains two cytoskeletal structures associated with the axoneme: the outer dense fibers surrounding the axoneme in the midpiece and principal piece and the fibrous sheath surrounding the outer dense fibers in the principal piece of the tail. Defects in these structures are associated with abnormal tail morphology, reduced

Target Details

sperm motility, and infertility. In the rat, the protein encoded by this gene associates with an outer dense fiber protein via a leucine zipper motif and localizes to the microtubules of the manchette and axoneme during sperm tail development.

Aliases: SPAG4 antibody, SUN4 antibody, Sperm-associated antigen 4 protein antibody, Outer dense fiber-associated protein SPAG4 antibody, SUN domain-containing protein 4 antibody

UniProt: [Q9NPE6](#)

Application Details

Application Notes: ELISA:1:2000-1:10000, WB:1:500-1:2000, IHC:1:50-1:200,

Restrictions: For Research Use only

Handling

Format: Liquid

Buffer: -20 °C, pH 7.4 PBS, 0.05 % Sodium azide, 40 % Glycerol

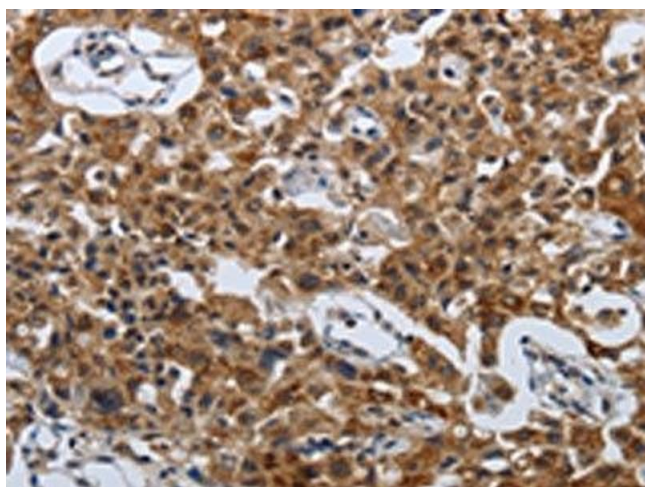
Preservative: Sodium azide

Precaution of Use: This product contains Sodium azide: a POISONOUS AND HAZARDOUS SUBSTANCE which should be handled by trained staff only.

Storage: -20 °C, -80 °C

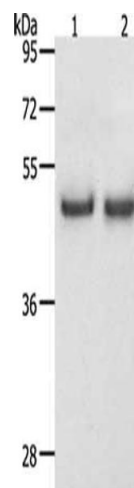
Storage Comment: Upon receipt, store at -20°C or -80°C. Avoid repeated freeze.

Images



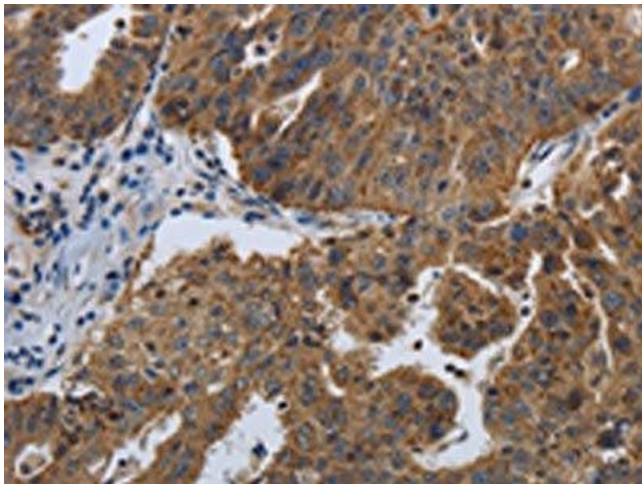
Immunohistochemistry

Image 1. The image on the left is immunohistochemistry of paraffin-embedded Human lung cancer tissue using ABIN7192614(SPAG4 Antibody) at dilution 1/50, on the right is treated with synthetic peptide. (Original magnification: x200)



Western Blotting

Image 2. Gel: 12 % SDS-PAGE, Lysate: 40 µg, Lane 1-2: Hela cells, K562 cells, Primary antibody: ABIN7192614(SPAG4 Antibody) at dilution 1/1100, Secondary antibody: Goat anti rabbit IgG at 1/8000 dilution, Exposure time: 30 seconds



Immunohistochemistry

Image 3. The image on the left is immunohistochemistry of paraffin-embedded Human ovarian cancer tissue using ABIN7192614(SPAG4 Antibody) at dilution 1/50, on the right is treated with synthetic peptide. (Original magnification: x200)