

Datasheet for ABIN7192619

**anti-SPAG6 antibody****2** Images[Go to Product page](#)

## Overview

Quantity:	100 µL
Target:	SPAG6
Reactivity:	Human
Host:	Rabbit
Clonality:	Polyclonal
Conjugate:	This SPAG6 antibody is un-conjugated
Application:	ELISA, Immunohistochemistry (IHC)

## Product Details

Immunogen:	Synthetic peptide of Human SPAG6
Isotype:	IgG
Cross-Reactivity:	Human, Mouse
Purification:	Antigen affinity purification

## Target Details

Target:	SPAG6
Alternative Name:	SPAG6 ( <a href="#">SPAG6 Products</a> )
Background:	Background: The correlation of anti-sperm antibodies with cases of unexplained infertility implicates a role for these antibodies in blocking fertilization. Improved diagnosis and treatment of immunologic infertility, as well as identification of proteins for targeted contraception, are dependent on the identification and characterization of relevant sperm

## Target Details

antigens. The protein expressed by this gene is recognized by anti-sperm antibodies from an infertile man. This protein localizes to the tail of permeabilized human sperm and contains eight contiguous armadillo repeats, a motif known to mediate protein-protein interactions.

Aliases: axoneme central apparatus protein antibody, DKFZp434I153 antibody, MGC26276 antibody, PF16 antibody, PF16 protein homolog antibody, Protein PF16 homolog antibody, Repro SA 1 antibody, Repro-SA-1 antibody, SPAG6 antibody, SPAG6\_HUMAN antibody, Sperm associated antigen 6 antibody, Sperm flagellar protein antibody, Sperm-associated antigen 6 antibody

UniProt: [O75602](#)

## Application Details

Application Notes: ELISA:1:1000-1:5000, IHC:1:25-1:100,

Restrictions: For Research Use only

## Handling

Format: Liquid

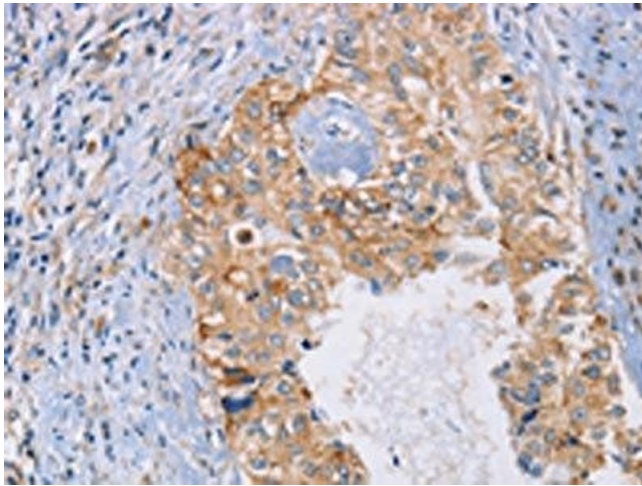
Buffer: -20 °C, pH 7.4 PBS, 0.05 % Sodium azide, 40 % Glycerol

Preservative: Sodium azide

Precaution of Use: This product contains Sodium azide: a POISONOUS AND HAZARDOUS SUBSTANCE which should be handled by trained staff only.

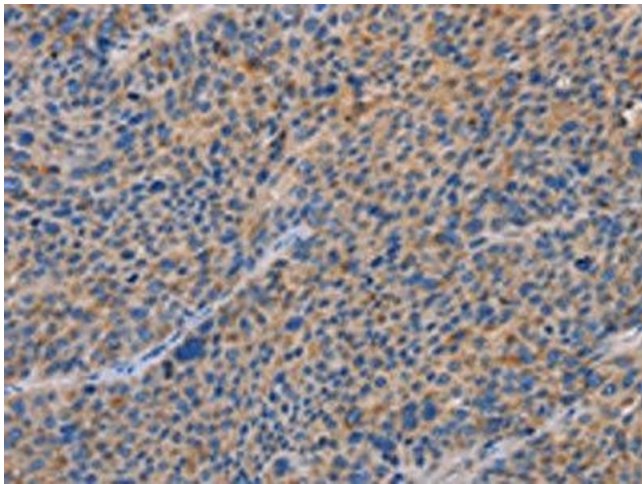
Storage: -20 °C, -80 °C

Storage Comment: Upon receipt, store at -20°C or -80°C. Avoid repeated freeze.



#### Immunohistochemistry

**Image 1.** The image on the left is immunohistochemistry of paraffin-embedded Human cervical cancer tissue using ABIN7192619(SPAG6 Antibody) at dilution 1/30, on the right is treated with synthetic peptide. (Original magnification: x200)



#### Immunohistochemistry

**Image 2.** The image on the left is immunohistochemistry of paraffin-embedded Human liver cancer tissue using ABIN7192619(SPAG6 Antibody) at dilution 1/30, on the right is treated with synthetic peptide. (Original magnification: x200)