

Datasheet for ABIN7192624
anti-SPATA18 antibody

2 Images

[Go to Product page](#)

Overview

Quantity:	100 µL
Target:	SPATA18
Reactivity:	Human
Host:	Rabbit
Clonality:	Polyclonal
Conjugate:	This SPATA18 antibody is un-conjugated
Application:	Western Blotting (WB), ELISA, Immunohistochemistry (IHC)

Product Details

Immunogen:	Synthetic peptide of Human SPATA18
Isotype:	IgG
Cross-Reactivity:	Human
Purification:	Antigen affinity purification

Target Details

Target:	SPATA18
Alternative Name:	SPATA18 (SPATA18 Products)
Background:	Background: SPATA18 (spermatogenesis associated 18), also known as Mieap or SPETEX1, is a 538 amino acid protein that is thought to play a role in cell differentiation during spermatogenesis, particularly during development from late elongate spermatids to mature spermatozoa. Localizing to cytoplasm, SPATA18 is encoded by a gene that maps to human

Target Details

chromosome 4q12.

Aliases: 1700067102Rik antibody, FLJ32906 antibody, MGC93900 antibody, Mieap antibody, mitochondria eating protein antibody, SPATA18 antibody, Spermatogenesis associated 18 antibody, spermatogenesis associated 18 homolog (rat) antibody, Spermatogenesis associated protein 18 antibody, Spermatogenesis-associated protein 18 antibody, SPETEX1 antibody, SPT18_HUMAN antibody

UniProt: [Q8TC71](#)

Application Details

Application Notes: ELISA:1:1000-1:2000, WB:1:200-1:1000, IHC:1:25-1:100,

Restrictions: For Research Use only

Handling

Format: Liquid

Buffer: -20 °C, pH 7.4 PBS, 0.05 % Sodium azide, 40 % Glycerol

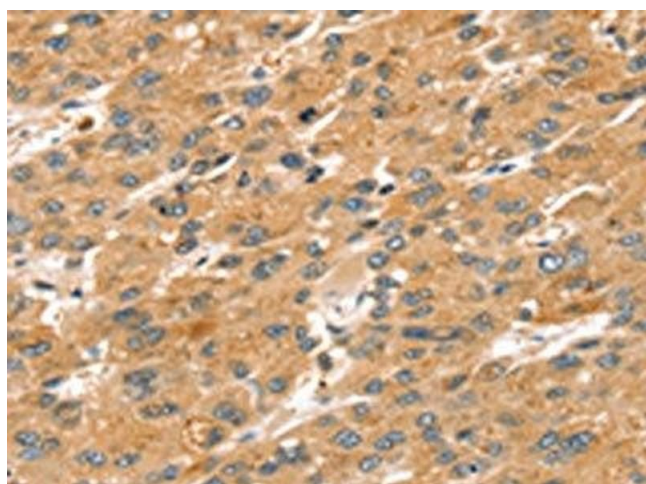
Preservative: Sodium azide

Precaution of Use: This product contains Sodium azide: a POISONOUS AND HAZARDOUS SUBSTANCE which should be handled by trained staff only.

Storage: -20 °C,-80 °C

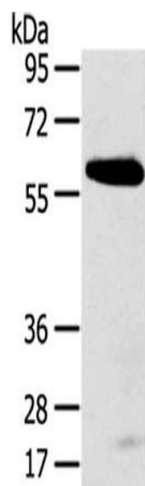
Storage Comment: Upon receipt, store at -20°C or -80°C. Avoid repeated freeze.

Images



Immunohistochemistry

Image 1. The image on the left is immunohistochemistry of paraffin-embedded Human liver cancer tissue using ABIN7192624(SPATA18 Antibody) at dilution 1/20, on the right is treated with synthetic peptide. (Original magnification: x200)



Western Blotting

Image 2. Gel: 8 % SDS-PAGE, Lysate: 40 µg, Primary antibody: ABIN7192624 (SPATA18 Antibody) at dilution 1/250 dilution, Secondary antibody: Goat anti rabbit IgG at 1/8000 dilution, Exposure time: 5 minutes