

Datasheet for ABIN7192626

anti-SPATA2 antibody[Go to Product page](#)**2** Images

Overview

Quantity:	100 µL
Target:	SPATA2
Reactivity:	Human
Host:	Rabbit
Clonality:	Polyclonal
Conjugate:	This SPATA2 antibody is un-conjugated
Application:	Immunohistochemistry (IHC), ELISA

Product Details

Immunogen:	Synthetic peptide of Human SPATA20
Isotype:	IgG
Cross-Reactivity:	Human
Purification:	Antigen affinity purification

Target Details

Target:	SPATA2
Alternative Name:	SPATA2 (SPATA2 Products)
Background:	Background: The protein may play a role in fertility regulation. It were significantly upregulated in individual bile samples from Cholangiocarcinoma patients by Western blotting and Immunohistochemistry, relative to normal tissues. It acts as a potential serum diagnostic biomarker for Cholangiocarcinoma.

Target Details

Aliases: SPATA20 antibody, Spermatogenesis-associated protein 20 antibody, Sperm-specific protein 411 antibody, Ssp411 antibody

UniProt: [Q8TB22](#)

Application Details

Application Notes: ELISA:1:2000-1:10000, IHC:1:100-1:300,

Restrictions: For Research Use only

Handling

Format: Liquid

Buffer: -20 °C, pH 7.4 PBS, 0.05 % Sodium azide, 40 % Glycerol

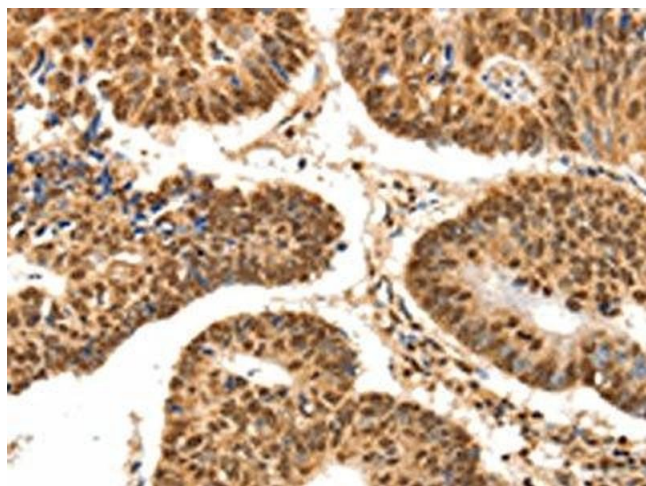
Preservative: Sodium azide

Precaution of Use: This product contains Sodium azide: a POISONOUS AND HAZARDOUS SUBSTANCE which should be handled by trained staff only.

Storage: -20 °C, -80 °C

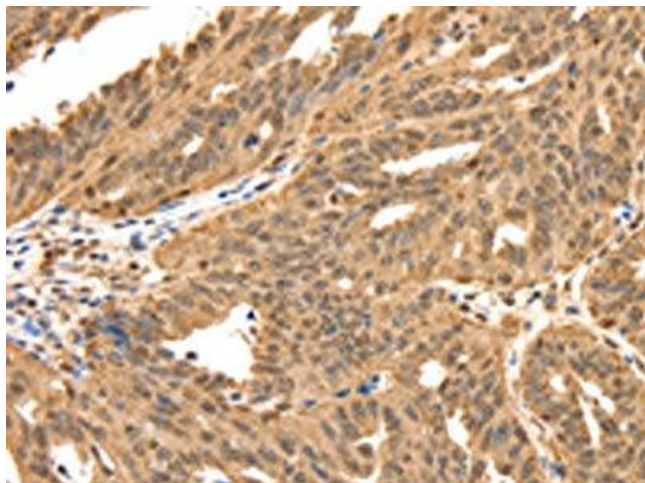
Storage Comment: Upon receipt, store at -20°C or -80°C. Avoid repeated freeze.

Images



Immunohistochemistry

Image 1. The image on the left is immunohistochemistry of paraffin-embedded Human colon cancer tissue using ABIN7192626(SPATA20 Antibody) at dilution 1/70, on the right is treated with synthetic peptide. (Original magnification: x200)



Immunohistochemistry

Image 2. The image on the left is immunohistochemistry of paraffin-embedded Human ovarian cancer tissue using ABIN7192626(SPATA20 Antibody) at dilution 1/70, on the right is treated with synthetic peptide. (Original magnification: x200)