

Datasheet for ABIN7192632

anti-SPON1 antibody**1** Image[Go to Product page](#)

Overview

Quantity:	100 µL
Target:	SPON1
Reactivity:	Human
Host:	Rabbit
Clonality:	Polyclonal
Conjugate:	This SPON1 antibody is un-conjugated
Application:	Immunohistochemistry (IHC), ELISA

Product Details

Immunogen:	Synthetic peptide of Human SPON1
Isotype:	IgG
Cross-Reactivity:	Human, Mouse, Rat
Purification:	Antigen affinity purification

Target Details

Target:	SPON1
Alternative Name:	SPON1 (SPON1 Products)
Target Type:	Viral Protein
Background:	Background: F-Spondin, also designated Spondin-1 or vascular smooth muscle growth-promoting factor, is a member of the subgroup of the Thrombospondin type 1 class molecules.

Target Details

F-Spondin is a secreted, extracellular matrix-attached protein which patterns axonal trajectories by promoting adhesion and outgrowth of commissural axons, in addition to inhibiting outgrowth of motor axons.

Aliases: SPON1 antibody, KIAA0762 antibody, VSGPSpondin-1 antibody, F-spondin antibody, Vascular smooth muscle cell growth-promoting factor antibody

UniProt: [Q9HCB6](#)

Application Details

Application Notes: ELISA:1:1000-1:2000, IHC:1:10-1:50,

Restrictions: For Research Use only

Handling

Format: Liquid

Buffer: -20 °C, pH 7.4 PBS, 0.05 % Sodium azide, 40 % Glycerol

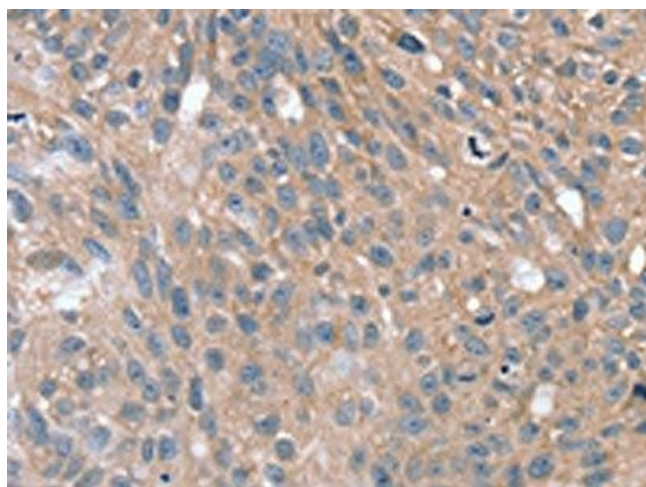
Preservative: Sodium azide

Precaution of Use: This product contains Sodium azide: a POISONOUS AND HAZARDOUS SUBSTANCE which should be handled by trained staff only.

Storage: -20 °C, -80 °C

Storage Comment: Upon receipt, store at -20°C or -80°C. Avoid repeated freeze.

Images



Immunohistochemistry

Image 1. The image on the left is immunohistochemistry of paraffin-embedded Human breast cancer tissue using ABIN7192632(SPON1 Antibody) at dilution 1/25, on the right is treated with synthetic peptide. (Original magnification: x200)