

Datasheet for ABIN7192636

anti-SPRN antibody

2 Images

[Go to Product page](#)

Overview

Quantity:	100 µL
Target:	SPRN
Reactivity:	Human
Host:	Rabbit
Clonality:	Polyclonal
Conjugate:	This SPRN antibody is un-conjugated
Application:	Immunohistochemistry (IHC), ELISA

Product Details

Immunogen:	Synthetic peptide of Human SPRN
Isotype:	IgG
Cross-Reactivity:	Human
Purification:	Antigen affinity purification

Target Details

Target:	SPRN
Alternative Name:	SPRN (SPRN Products)
Background:	Background: SPRN (shadow of prion protein), also known as SHO or SHADOO, is a 151 amino acid cytoplasmic protein that is mainly expressed in brain. SPRN is considered a prion-like protein that has PrP(C)-like neuroprotective activity and may act as a modulator for the biological actions of normal and abnormal PrP. In humans, mutations in the gene encoding

Target Details

SPRN may be associated with variant and sporadic Creutzfeldt-Jakob disease, a degenerative neurological disorder that is incurable and invariably fatal.

Aliases: SPRN antibody, SHO antibody, Shadow of prion protein antibody, Protein shadoo antibody

UniProt: [Q5BIV9](#)

Application Details

Application Notes: ELISA:1:1000-1:2000, IHC:1:25-1:100,

Restrictions: For Research Use only

Handling

Format: Liquid

Buffer: -20 °C, pH 7.4 PBS, 0.05 % Sodium azide, 40 % Glycerol

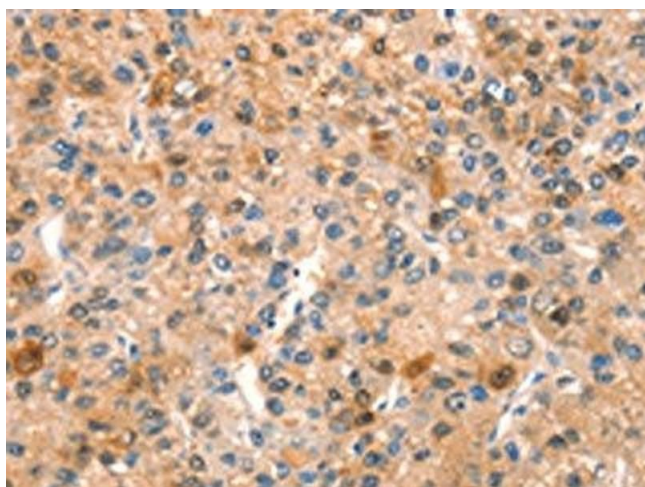
Preservative: Sodium azide

Precaution of Use: This product contains Sodium azide: a POISONOUS AND HAZARDOUS SUBSTANCE which should be handled by trained staff only.

Storage: -20 °C, -80 °C

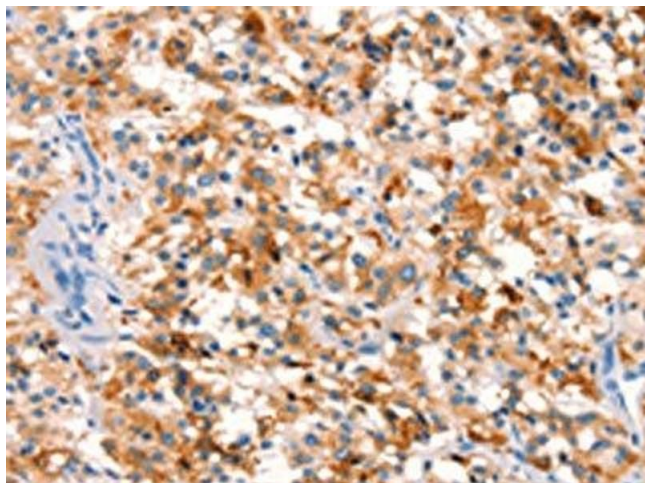
Storage Comment: Upon receipt, store at -20°C or -80°C. Avoid repeated freeze.

Images



Immunohistochemistry

Image 1. The image on the left is immunohistochemistry of paraffin-embedded Human liver cancer tissue using ABIN7192636 (SPRN Antibody) at dilution 1/15, on the right is treated with synthetic peptide. (Original magnification: x200)



Immunohistochemistry

Image 2. The image on the left is immunohistochemistry of paraffin-embedded Human thyroid cancer tissue using ABIN7192636 (SPRN Antibody) at dilution 1/15, on the right is treated with synthetic peptide. (Original magnification: x200)