

Datasheet for ABIN7192646

anti-SRGAP2 antibody[Go to Product page](#)**1** Image

Overview

Quantity:	100 µL
Target:	SRGAP2
Reactivity:	Human
Host:	Rabbit
Clonality:	Polyclonal
Conjugate:	This SRGAP2 antibody is un-conjugated
Application:	ELISA, Immunohistochemistry (IHC)

Product Details

Immunogen:	Synthetic peptide of Human SRGAP2
Isotype:	IgG
Cross-Reactivity:	Human, Mouse, Rat
Purification:	Antigen affinity purification

Target Details

Target:	SRGAP2
Alternative Name:	SRGAP2 (SRGAP2 Products)
Background:	Background: This locus encodes a member of the SLIT-ROBO Rho GTPase activating protein family. The encoded protein stimulates GTPase activity of Rac1, and plays a role in cortical neuron development. This locus has several paralogs on human chromosome 1 resulting from segmental duplication. While this locus itself is conserved among various species, the paralogs

Target Details

are found only in the genus Homo, and not in the genomes of non-human great apes.

Aliases: ARHGAP34 antibody, FBP2 antibody, FNBP2 antibody, FNBP2_HUMAN antibody, Formin binding protein 2 antibody, Formin-binding protein 2 antibody, Rho GTPase-activating protein 34 antibody, SLIT ROBO Rho GTPase activating protein 2 antibody, SLIT-ROBO Rho GTPase-activating protein 2 antibody, srGAP2 antibody, SRGAP3 antibody

UniProt: [O75044](#)

Application Details

Application Notes: ELISA:1:2000-1:5000, IHC:1:25-1:100,

Restrictions: For Research Use only

Handling

Format: Liquid

Buffer: -20 °C, pH 7.4 PBS, 0.05 % Sodium azide, 40 % Glycerol

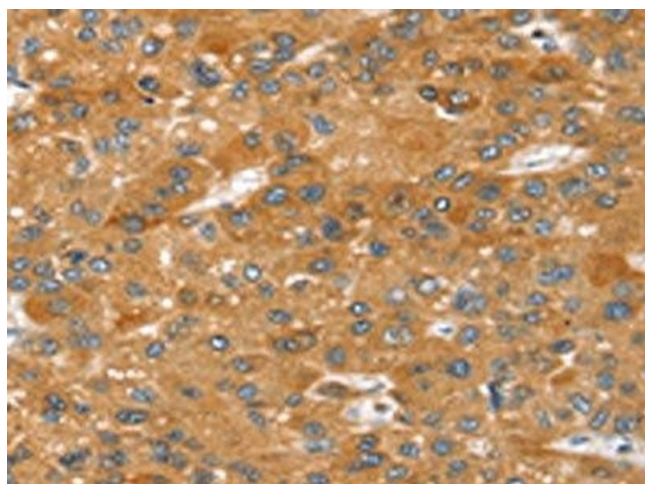
Preservative: Sodium azide

Precaution of Use: This product contains Sodium azide: a POISONOUS AND HAZARDOUS SUBSTANCE which should be handled by trained staff only.

Storage: -20 °C,-80 °C

Storage Comment: Upon receipt, store at -20°C or -80°C. Avoid repeated freeze.

Images



Immunohistochemistry

Image 1. The image on the left is immunohistochemistry of paraffin-embedded Human liver cancer tissue using ABIN7192646(SRGAP2 Antibody) at dilution 1/20, on the right is treated with synthetic peptide. (Original magnification: x200)