

Datasheet for ABIN7192659

anti-SSTR4 antibody[Go to Product page](#)**1** Image

Overview

Quantity:	100 µL
Target:	SSTR4
Reactivity:	Human
Host:	Rabbit
Clonality:	Polyclonal
Conjugate:	This SSTR4 antibody is un-conjugated
Application:	ELISA, Immunohistochemistry (IHC)

Product Details

Immunogen:	Synthetic peptide of Human SSTR4
Isotype:	IgG
Cross-Reactivity:	Human, Mouse, Rat
Purification:	Antigen affinity purification

Target Details

Target:	SSTR4
Alternative Name:	SSTR4 (SSTR4 Products)
Background:	Background: Somatostatin acts at many sites to inhibit the release of many hormones and other secretory proteins. The biologic effects of somatostatin are probably mediated by a family of G protein-coupled receptors that are expressed in a tissue-specific manner. SSTR4 is a member of the superfamily of receptors having seven transmembrane segments and is

Target Details

expressed in highest levels in fetal and adult brain and lung.

Aliases: Somatostatin Receptor 4 antibody, Somatostatin receptor type 4 antibody, SS 4R antibody, SS-4-R antibody, SS4-R antibody, SS4R antibody, SSR4_HUMAN antibody, SST R4 antibody, SSTR 4 antibody, Sstr4 antibody

UniProt: [P31391](#)

Pathways: [cAMP Metabolic Process](#)

Application Details

Application Notes: ELISA:1:2000-1:5000, IHC:1:25-1:100,

Restrictions: For Research Use only

Handling

Format: Liquid

Buffer: -20 °C, pH 7.4 PBS, 0.05 % Sodium azide, 40 % Glycerol

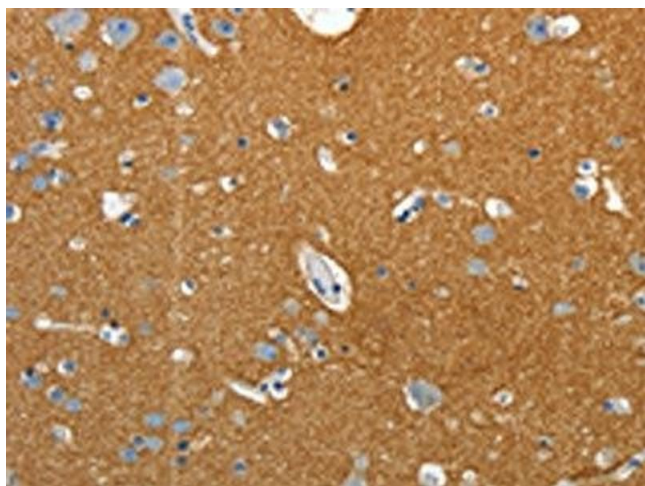
Preservative: Sodium azide

Precaution of Use: This product contains Sodium azide: a POISONOUS AND HAZARDOUS SUBSTANCE which should be handled by trained staff only.

Storage: -20 °C, -80 °C

Storage Comment: Upon receipt, store at -20°C or -80°C. Avoid repeated freeze.

Images



Immunohistochemistry

Image 1. The image on the left is immunohistochemistry of paraffin-embedded Human brain tissue using ABIN7192659(SSTR4 Antibody) at dilution 1/25, on the right is treated with synthetic peptide. (Original magnification: x200)