

Datasheet for ABIN7192661

**anti-SSTR5 antibody**

3 Images

[Go to Product page](#)

## Overview

Quantity:	100 µL
Target:	SSTR5
Reactivity:	Human
Host:	Rabbit
Clonality:	Polyclonal
Conjugate:	This SSTR5 antibody is un-conjugated
Application:	Western Blotting (WB), ELISA, Immunohistochemistry (IHC)

## Product Details

Immunogen:	Synthetic peptide of Human SSTR5
Isotype:	IgG
Cross-Reactivity:	Human, Mouse
Purification:	Antigen affinity purification

## Target Details

Target:	SSTR5
Alternative Name:	SSTR5 ( <a href="#">SSTR5 Products</a> )
Background:	Background: Somatostatin and its related peptide cortistatin exert multiple biological actions on normal and tumoral tissue targets by interacting with somatostatin receptors (SSTRs). The protein encoded by this gene is one of the SSTRs, which is a multi-pass membrane protein and belongs to the G-protein coupled receptor 1 family. The activity of this receptor is mediated by

## Target Details

G proteins which inhibit adenylyl cyclase, and different regions of this receptor molecule are required for the activation of different signaling pathways. A mutation in this gene results in somatostatin analog resistance. Alternatively spliced transcript variants have been identified in this gene.

Aliases: body, Somatostatin receptor subtype 5 antibody, Somatostatin receptor type 5 antibody, SS 5R antibody, SS-5-R antibody, SS5 R antibody, SS5-R antibody, SS5R antibody, SSR5\_HUMAN antibody, SST R5 antibody, SSTR 5 antibody, Sstr5 antibody

UniProt: [P35346](#)

Pathways: [Carbohydrate Homeostasis](#)

## Application Details

Application Notes: ELISA:1:1000-1:5000, WB:1:200-1:1000, IHC:1:25-1:100,

Restrictions: For Research Use only

## Handling

Format: Liquid

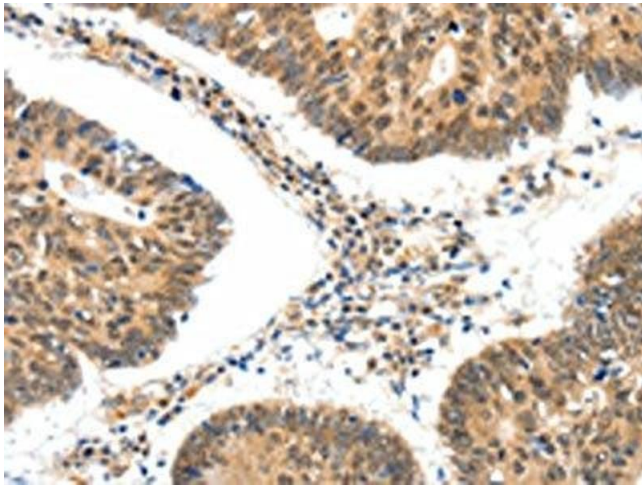
Buffer: -20 °C, pH 7.4 PBS, 0.05 % Sodium azide, 40 % Glycerol

Preservative: Sodium azide

Precaution of Use: This product contains Sodium azide: a POISONOUS AND HAZARDOUS SUBSTANCE which should be handled by trained staff only.

Storage: -20 °C, -80 °C

Storage Comment: Upon receipt, store at -20°C or -80°C. Avoid repeated freeze.



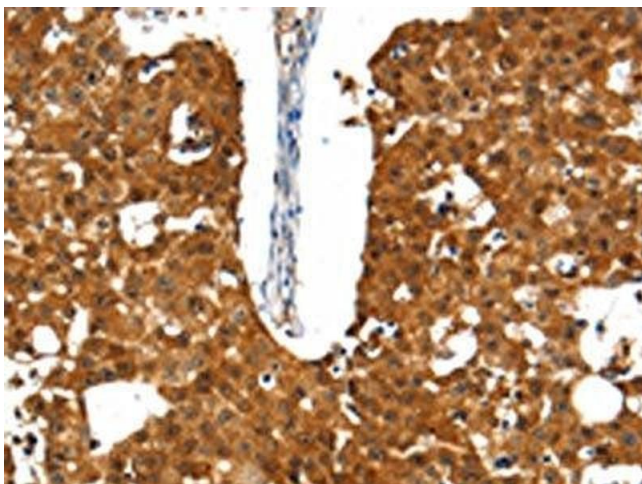
#### Immunohistochemistry

**Image 1.** The image on the left is immunohistochemistry of paraffin-embedded Human colon cancer tissue using ABIN7192661(SSTR5 Antibody) at dilution 1/30, on the right is treated with synthetic peptide. (Original magnification: x200)



#### Western Blotting

**Image 2.** Gel: 10 % SDS-PAGE, Lysate: 60 µg, Lane: Mouse thymus tissue, Primary antibody: ABIN7192661(SSTR5 Antibody) at dilution 1/350, Secondary antibody: Goat anti rabbit IgG at 1/8000 dilution, Exposure time: 20 seconds



#### Immunohistochemistry

**Image 3.** The image on the left is immunohistochemistry of paraffin-embedded Human breast cancer tissue using ABIN7192661(SSTR5 Antibody) at dilution 1/30, on the right is treated with synthetic peptide. (Original magnification: x200)