

Datasheet for ABIN7192664

**anti-SSX4 antibody**[Go to Product page](#)**1** Image

## Overview

Quantity:	100 µL
Target:	SSX4
Reactivity:	Human
Host:	Rabbit
Clonality:	Polyclonal
Conjugate:	This SSX4 antibody is un-conjugated
Application:	ELISA, Immunohistochemistry (IHC)

## Product Details

Immunogen:	Synthetic peptide of Human SSX4
Isotype:	IgG
Cross-Reactivity:	Human
Purification:	Antigen affinity purification

## Target Details

Target:	SSX4
Alternative Name:	SSX4 ( <a href="#">SSX4 Products</a> )
Background:	Background: The product of this gene belongs to the family of highly homologous synovial sarcoma X (SSX) breakpoint proteins. These proteins may function as transcriptional repressors. They are also capable of eliciting spontaneously humoral and cellular immune responses in cancer patients, and are potentially useful targets in cancer vaccine-based

## Target Details

immunotherapy.

Aliases: Cancer/testis antigen 5.4 antibody, CT5.4 antibody, MGC12411 antibody, Protein SSX4 antibody, SSX4\_HUMAN antibody, SSX4B antibody, Synovial sarcoma X breakpoint 4 antibody

UniProt: [O60224](#)

## Application Details

Application Notes: ELISA:1:2000-1:5000, IHC:1:25-1:100,

Restrictions: For Research Use only

## Handling

Format: Liquid

Buffer: -20 °C, pH 7.4 PBS, 0.05 % Sodium azide, 40 % Glycerol

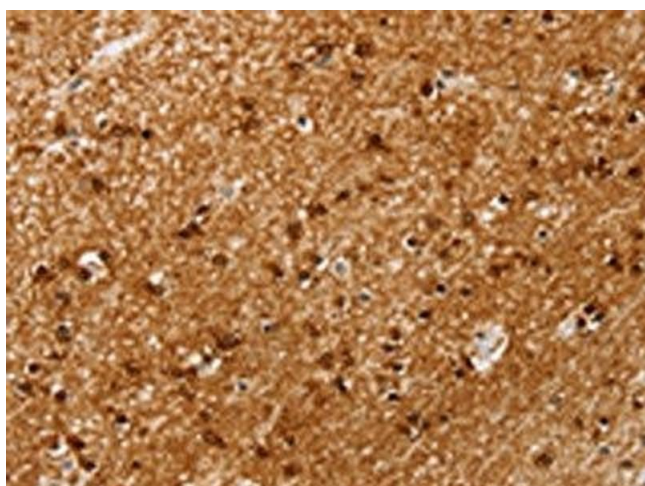
Preservative: Sodium azide

Precaution of Use: This product contains Sodium azide: a POISONOUS AND HAZARDOUS SUBSTANCE which should be handled by trained staff only.

Storage: -20 °C,-80 °C

Storage Comment: Upon receipt, store at -20°C or -80°C. Avoid repeated freeze.

## Images



### Immunohistochemistry

**Image 1.** The image on the left is immunohistochemistry of paraffin-embedded Human brain tissue using ABIN7192664(SSX4 Antibody) at dilution 1/20, on the right is treated with synthetic peptide. (Original magnification: x200)