

Datasheet for ABIN7192673

anti-STEAP4 antibody

3 Images

[Go to Product page](#)

Overview

Quantity:	100 µL
Target:	STEAP4
Reactivity:	Human
Host:	Rabbit
Clonality:	Polyclonal
Conjugate:	This STEAP4 antibody is un-conjugated
Application:	ELISA, Western Blotting (WB), Immunohistochemistry (IHC)

Product Details

Immunogen:	Synthetic peptide of Human STEAP4
Isotype:	IgG
Cross-Reactivity:	Human, Mouse
Purification:	Antigen affinity purification

Target Details

Target:	STEAP4
Alternative Name:	STEAP4 (STEAP4 Products)
Background:	Background: The protein encoded by this gene belongs to the STEAP (six transmembrane epithelial antigen of prostate) family, and resides in the golgi apparatus. It functions as a metalloredutase that has the ability to reduce both Fe(3+) to Fe(2+) and Cu(2+) to Cu(1+), using NAD(+) as acceptor. Studies in mice and human suggest that this gene maybe involved in

Target Details

adipocyte development and metabolism, and may contribute to the normal biology of the prostate cell, as well as prostate cancer progression. Alternatively spliced transcript variants encoding different isoforms have been found for this gene.

Aliases: alpha-induced protein 9 antibody, Metalloreductase STEAP4 antibody, six transmembrane prostate protein 2 antibody, Six-transmembrane epithelial antigen of prostate 4 antibody, SixTransMembrane protein of prostate 2 antibody, STAMP 2 antibody, STAMP2 antibody, STEA4_HUMAN antibody, STEAP 4 antibody, STEAP family member 4 antibody, STEAP4 antibody, TIARP antibody, TNFAIP 9 antibody, TNFAIP9 antibody, Tumor necrosis factor antibody, tumor necrosis factor, alpha-induced protein 9 antibody, tumor necrosis-alpha-induced adipose-related protein antibody

UniProt: [Q687X5](#)

Pathways: [Transition Metal Ion Homeostasis](#)

Application Details

Application Notes: ELISA:1:2000-1:5000, WB:1:200-1:1000, IHC:1:25-1:100,

Restrictions: For Research Use only

Handling

Format: Liquid

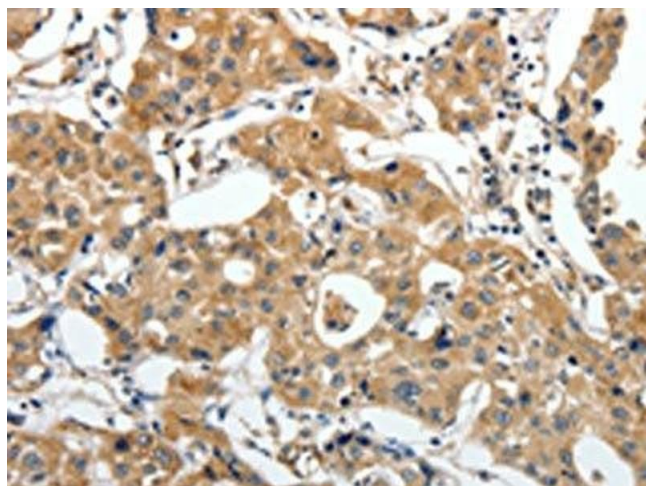
Buffer: -20 °C, pH 7.4 PBS, 0.05 % Sodium azide, 40 % Glycerol

Preservative: Sodium azide

Precaution of Use: This product contains Sodium azide: a POISONOUS AND HAZARDOUS SUBSTANCE which should be handled by trained staff only.

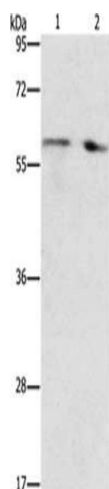
Storage: -20 °C,-80 °C

Storage Comment: Upon receipt, store at -20°C or -80°C. Avoid repeated freeze.



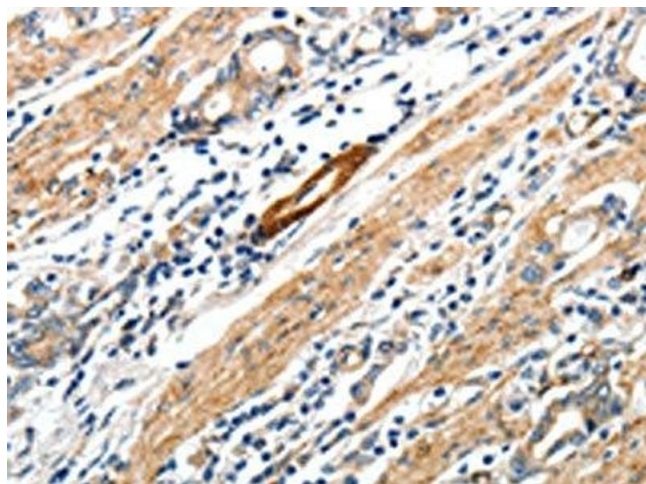
Immunohistochemistry

Image 1. The image on the left is immunohistochemistry of paraffin-embedded Human lung cancer tissue using ABIN7192673(STEAP4 Antibody) at dilution 1/25, on the right is treated with synthetic peptide. (Original magnification: x200)



Western Blotting

Image 2. Gel: 10 % SDS-PAGE, Lysate: 40 µg, Lane 1-2: Human liver cancer tissue, Human fetal liver tissue, Primary antibody: ABIN7192673(STEAP4 Antibody) at dilution 1/450, Secondary antibody: Goat anti rabbit IgG at 1/8000 dilution, Exposure time: 40 seconds



Immunohistochemistry

Image 3. The image on the left is immunohistochemistry of paraffin-embedded Human gastric cancer tissue using ABIN7192673(STEAP4 Antibody) at dilution 1/25, on the right is treated with synthetic peptide. (Original magnification: x200)